

Product datasheet for **TA371008S**

ZNF 639 (ZNF639) Rabbit Polyclonal Antibody

Product data:

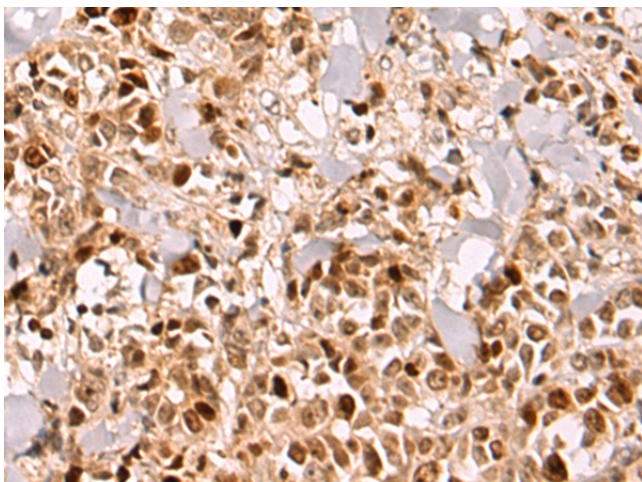
Product Type:	Primary Antibodies
Applications:	IHC
Recommended Dilution:	IHC: 100-300 Positive control: Human breast cancer Predicted cell location: Nucleus
Reactivity:	Human, Mouse, Rat
Host:	Rabbit
Isotype:	IgG
Clonality:	Polyclonal
Immunogen:	Fusion protein of human ZNF639
Formulation:	pH7.4 PBS, 0.05% NaN ₃ , 40% Glycerol
Purification:	Antigen affinity purification
Conjugation:	Unconjugated
Storage:	Store at -20°C.
Stability:	1 year
Gene Name:	zinc finger protein 639
Database Link:	Entrez Gene 51193 Human Q9UID6

Background: This gene encodes a member of the Kruppel-like zinc finger family of proteins. Amplification and overexpression of this gene have been observed in esophageal squamous cell carcinoma. The encoded protein has been shown to bind DNA in a sequence-specific manner and may regulate HIV-1 gene expression. Alternative splicing results in multiple transcript variants.

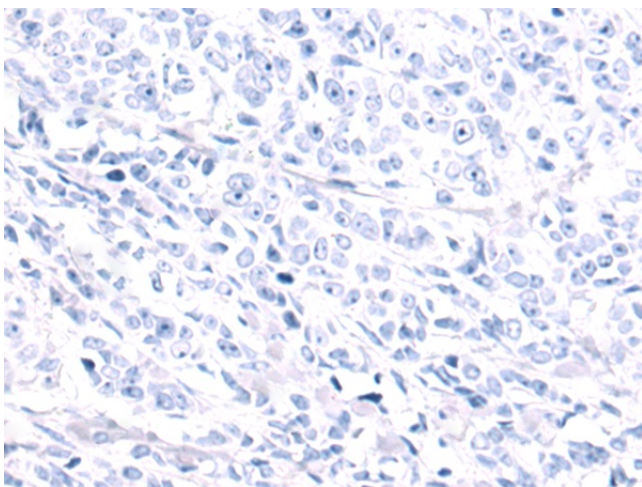
Synonyms: 6230400O18Rik; ANC-2H01; ANC_2H01; Kruppel-like; ZASC1

[View online »](#)

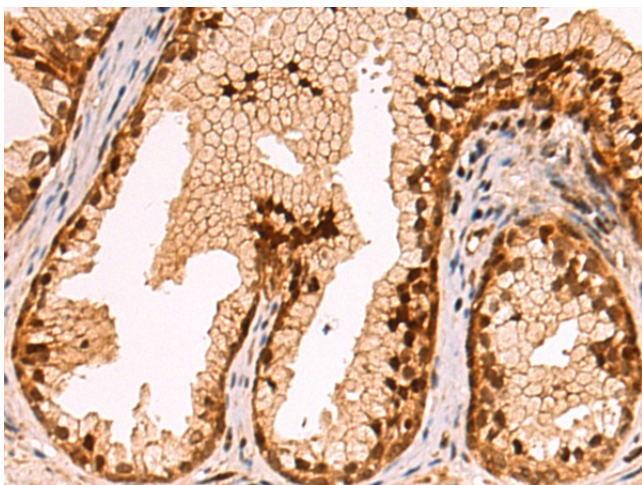
Product images:



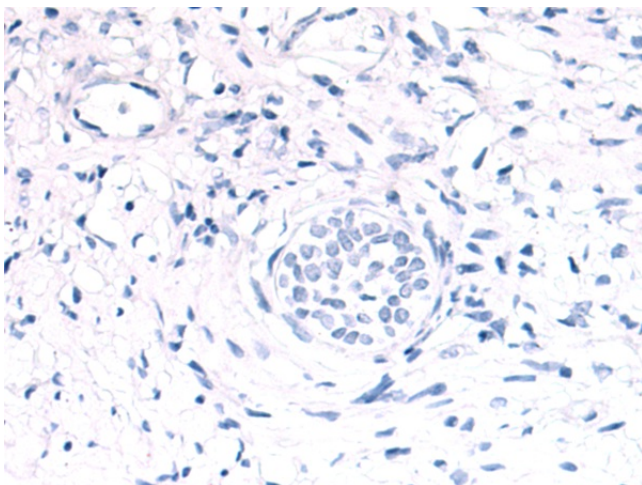
Immunohistochemistry of paraffin-embedded Human breast cancer tissue using [TA371008] (ZNF639 Antibody) at dilution 1/100 (Original magnification: $\times 200$)



Immunohistochemistry of paraffin-embedded Human breast cancer tissue using [TA371008] (ZNF639 Antibody) at dilution 1/100, treated with fusion protein. (Original magnification: $\times 200$)



Immunohistochemistry of paraffin-embedded Human prostate cancer tissue using [TA371008] (ZNF639 Antibody) at dilution 1/100 (Original magnification: ×200)



Immunohistochemistry of paraffin-embedded Human prostate cancer tissue using [TA371008] (ZNF639 Antibody) at dilution 1/100, treated with fusion protein. (Original magnification: ×200)