

## Product datasheet for **TA371005**

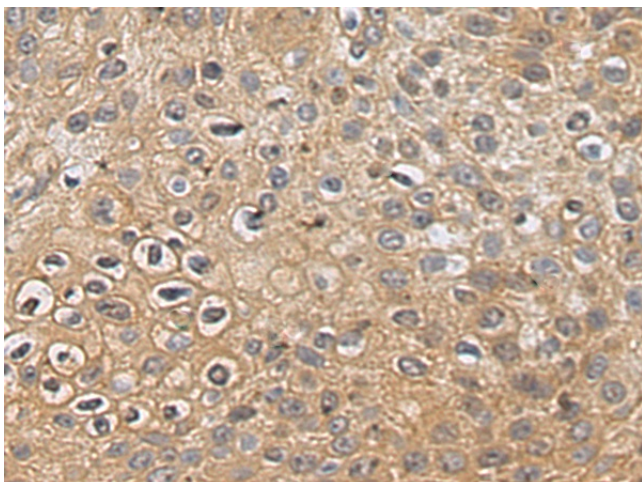
### **CORO2B Rabbit Polyclonal Antibody**

#### **Product data:**

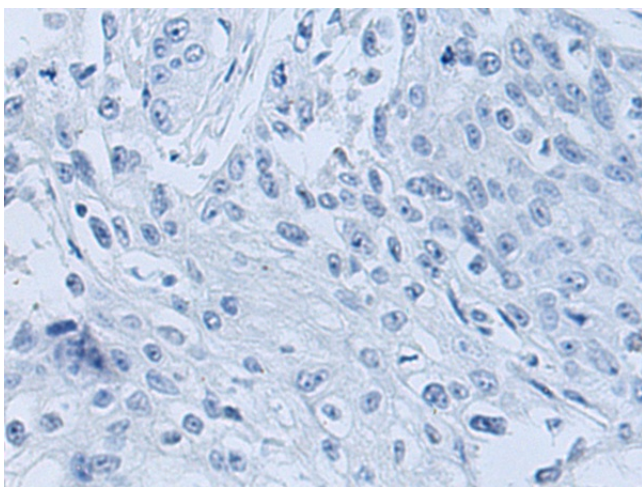
Product Type:	Primary Antibodies
Applications:	IHC
Recommended Dilution:	IHC: 150-300 Positive control: Human esophagus cancer Predicted cell location: Cytoplasm
Reactivity:	Human, Mouse
Host:	Rabbit
Isotype:	IgG
Clonality:	Polyclonal
Immunogen:	Fusion protein of human CORO2B
Formulation:	pH7.4 PBS, 0.05% NaN <sub>3</sub> , 40% Glycerol
Concentration:	lot specific
Purification:	Antigen affinity purification
Conjugation:	Unconjugated
Storage:	Store at -20°C.
Stability:	1 year
Gene Name:	coronin 2B
Database Link:	<a href="#">Entrez Gene 10391 Human Q9UQ03</a>
Background:	May play a role in the reorganization of neuronal actin structure.
Synonyms:	Clipin-C; CLIPINC; KIAA0925



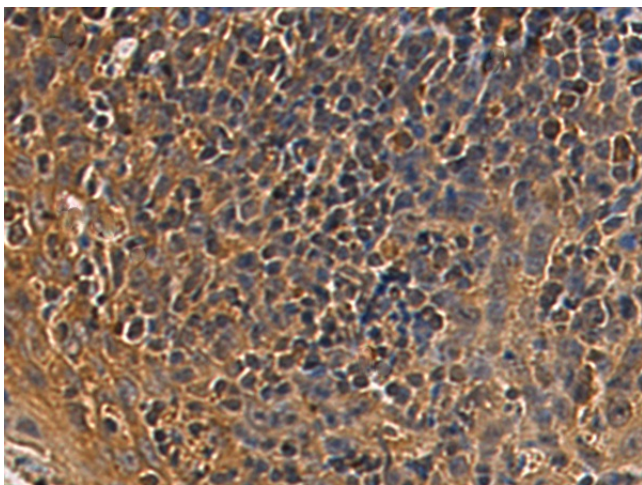
[View online »](#)

**Product images:**

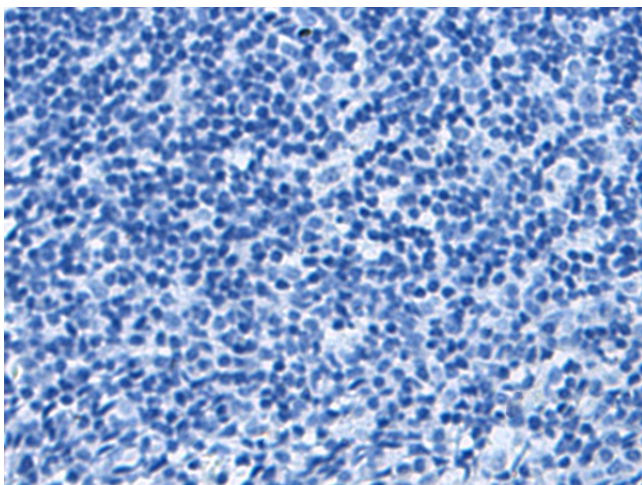
Immunohistochemistry of paraffin-embedded Human esophagus cancer tissue using TA371005 (CORO2B Antibody) at dilution 1/140 (Original magnification:  $\times 200$ )



Immunohistochemistry of paraffin-embedded Human esophagus cancer tissue using TA371005 (CORO2B Antibody) at dilution 1/140, treated with fusion protein. (Original magnification:  $\times 200$ )



Immunohistochemistry of paraffin-embedded Human tonsil tissue using TA371005 (CORO2B Antibody) at dilution 1/140 (Original magnification:  $\times 200$ )



Immunohistochemistry of paraffin-embedded Human tonsil tissue using TA371005 (CORO2B Antibody) at dilution 1/140, treated with fusion protein. (Original magnification:  $\times 200$ )