

## Product datasheet for **TA371002S**

### STCH (HSPA13) Rabbit Polyclonal Antibody

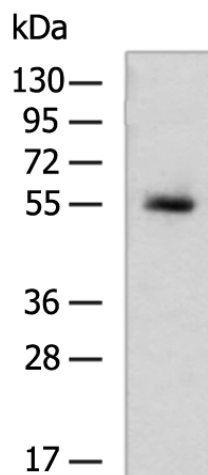
#### Product data:

Product Type:	Primary Antibodies
Applications:	IHC, WB
Recommended Dilution:	WB: 500-2000 WB positive control: Human uterus tissue lysate IHC: 100-300 Positive control: Human colorectal cancer Predicted cell location: Cytoplasm
Reactivity:	Human, Mouse, Rat
Host:	Rabbit
Isotype:	IgG
Clonality:	Polyclonal
Immunogen:	Fusion protein of human HSPA13
Formulation:	pH7.4 PBS, 0.05% NaN <sub>3</sub> , 40% Glycerol
Purification:	Antigen affinity purification
Conjugation:	Unconjugated
Storage:	Store at -20°C.
Stability:	1 year
Predicted Protein Size:	52 kDa
Gene Name:	heat shock protein family A (Hsp70) member 13
Database Link:	<a href="#">Entrez Gene 6782 Human P48723</a>
Background:	The protein encoded by this gene is a member of the heat shock protein 70 family and is found associated with microsomes. Members of this protein family play a role in the processing of cytosolic and secretory proteins, as well as in the removal of denatured or incorrectly-folded proteins. The encoded protein contains an ATPase domain and has been shown to associate with a ubiquitin-like protein.
Synonyms:	STCH

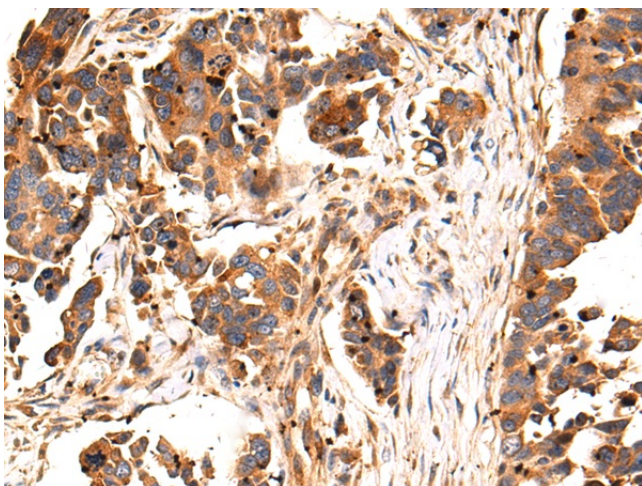


[View online »](#)

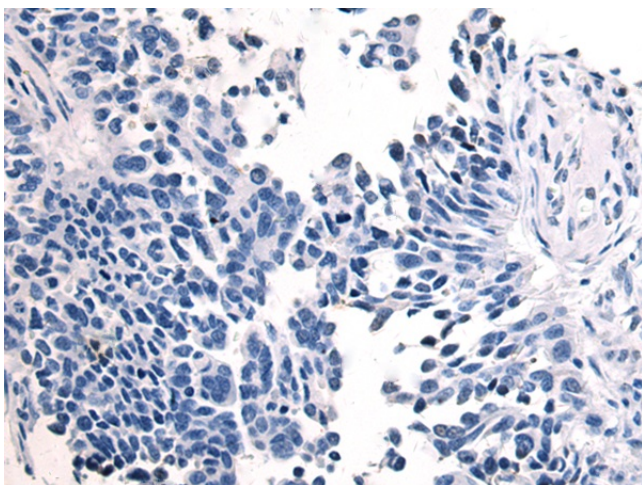
## Product images:



Gel: 8%SDS-PAGE  
Lysate: 40 µg  
Lane: Human uterus tissue lysate  
Primary antibody: [TA371002] (HSPA13 Antibody) at dilution 1/500  
Secondary antibody: Goat anti rabbit IgG at 1/5000 dilution  
Exposure time: 3 minutes



Immunohistochemistry of paraffin-embedded Human colorectal cancer tissue using [TA371002] (HSPA13 Antibody) at dilution 1/90 (Original magnification: ×200)



Immunohistochemistry of paraffin-embedded Human colorectal cancer tissue using [TA371002] (HSPA13 Antibody) at dilution 1/90, treated with fusion protein. (Original magnification: ×200)