

Product datasheet for **TA370997**

MCRS1 Rabbit Polyclonal Antibody

Product data:

Product Type:	Primary Antibodies
Applications:	IHC, WB
Recommended Dilution:	WB: 500-2000 WB positive control: 293T cell lysate IHC: 100-300 Positive control: Human thyroid cancer Predicted cell location: Cytoplasm and Nucleus
Reactivity:	Human, Mouse
Host:	Rabbit
Isotype:	IgG
Clonality:	Polyclonal
Immunogen:	Fusion protein of human MCRS1
Formulation:	pH7.4 PBS, 0.05% NaN ₃ , 40% Glycerol
Concentration:	lot specific
Purification:	Antigen affinity purification
Conjugation:	Unconjugated
Storage:	Store at -20°C.
Stability:	1 year
Predicted Protein Size:	52 kDa
Gene Name:	microspherule protein 1
Database Link:	Entrez Gene 10445 Human Q96EZ8



[View online »](#)

Background:

Modulates the transcription repressor activity of DAXX by recruiting it to the nucleolus (PubMed:11948183). As part of the NSL complex it may be involved in acetylation of nucleosomal histone H4 on several lysine residues (PubMed:20018852). Putative regulatory component of the chromatin remodeling INO80 complex which is involved in transcriptional regulation, DNA replication and probably DNA repair. May also be an inhibitor of TERT telomerase activity (PubMed:15044100). Binds to G-quadruplex structures in mRNA (PubMed:16571602). Binds to RNA homopolymer poly(G) and poly(U) (PubMed:16571602).

Synonyms:

ICP22BP; INO80Q; MCRS2; MSP58; P78

Product images:

kDa

130—

95—

72—

55—

36—

28—

17—



Gel: 8%SDS-PAGE

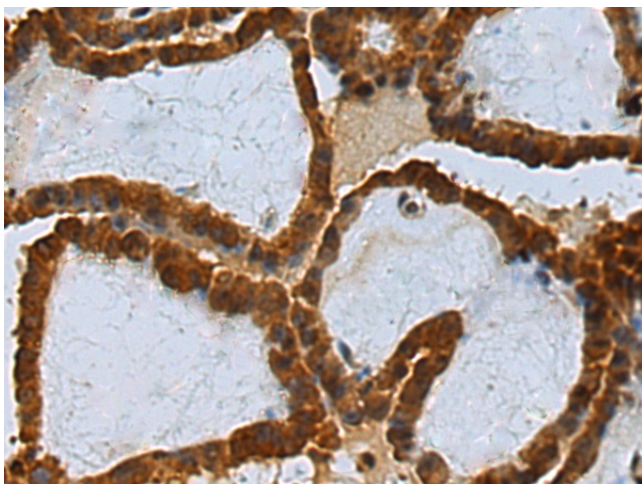
Lysate: 40 µg

Lane: 293T cell lysate

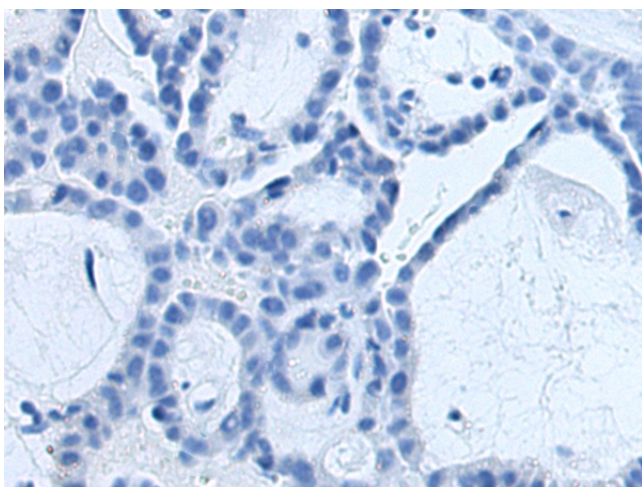
Primary antibody: TA370997 (MCRS1 Antibody) at dilution 1/700

Secondary antibody: Goat anti rabbit IgG at 1/5000 dilution

Exposure time: 2 minutes



Immunohistochemistry of paraffin-embedded Human thyroid cancer tissue using TA370997 (MCRS1 Antibody) at dilution 1/100 (Original magnification: ×200)



Immunohistochemistry of paraffin-embedded Human thyroid cancer tissue using TA370997 (MCRS1 Antibody) at dilution 1/100, treated with fusion protein. (Original magnification: ×200)