

Product datasheet for **TA370996S**

SIL1 Rabbit Polyclonal Antibody

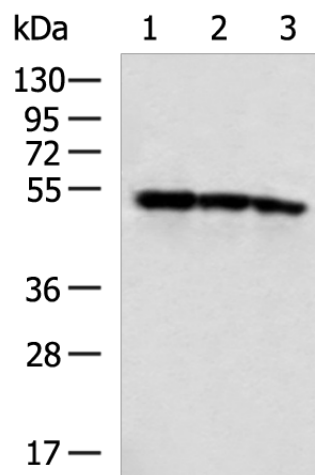
Product data:

| | |
|-------------------------|--|
| Product Type: | Primary Antibodies |
| Applications: | IHC, WB |
| Recommended Dilution: | WB: 500-2000 WB positive control: Hela, K562 and HepG2 cell lysates IHC: 150-300 Positive control: Human liver cancer Predicted cell location: Cytoplasm |
| Reactivity: | Human, Mouse, Rat |
| Host: | Rabbit |
| Isotype: | IgG |
| Clonality: | Polyclonal |
| Immunogen: | Fusion protein of human SIL1 |
| Formulation: | pH7.4 PBS, 0.05% NaN ₃ , 40% Glycerol |
| Purification: | Antigen affinity purification |
| Conjugation: | Unconjugated |
| Storage: | Store at -20°C. |
| Stability: | 1 year |
| Predicted Protein Size: | 52 kDa |
| Gene Name: | SIL1 nucleotide exchange factor |
| Database Link: | Entrez Gene 64374 Human Q9H173 |
| Background: | This gene encodes a resident endoplasmic reticulum (ER), N-linked glycoprotein with an N-terminal ER targeting sequence, 2 putative N-glycosylation sites, and a C-terminal ER retention signal. This protein functions as a nucleotide exchange factor for another unfolded protein response protein. Mutations in this gene have been associated with Marinesco-Sjogren syndrome. Alternate transcriptional splice variants have been characterized. |
| Synonyms: | BAP; MSS; ULG5 |

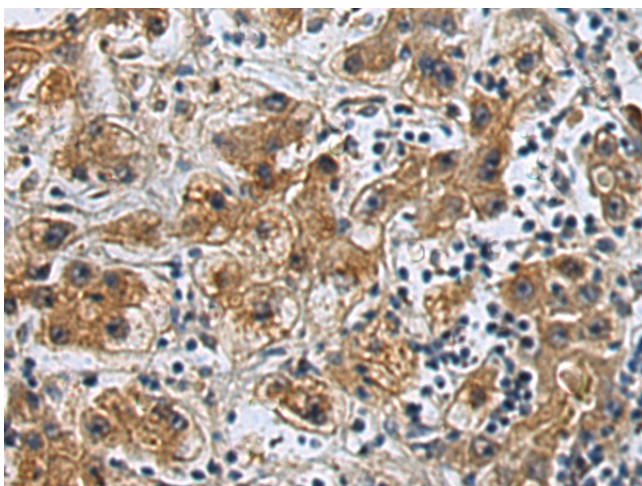


[View online »](#)

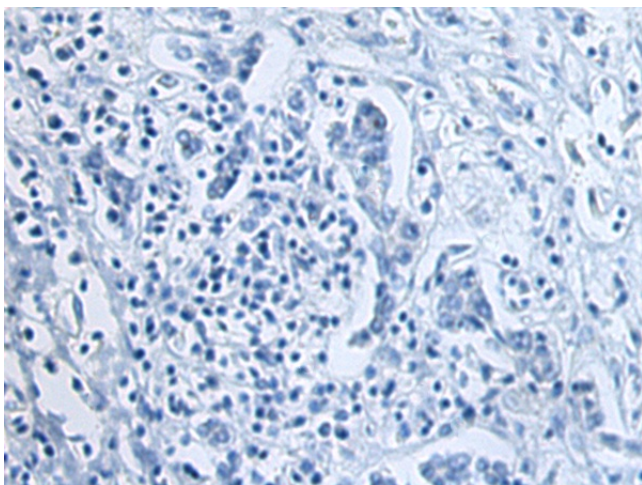
Product images:



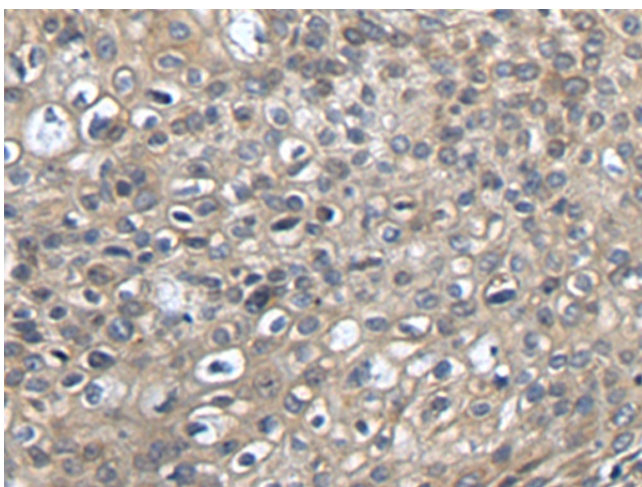
Gel: 8%SDS-PAGE
Lysate: 40 μ g
Lane 1-3: HeLa
K562 and HepG2 cell lysates
Primary antibody: [TA370996] (SIL1 Antibody) at
dilution 1/400
Secondary antibody: Goat anti rabbit IgG at
1/5000 dilution
Exposure time: 10 seconds



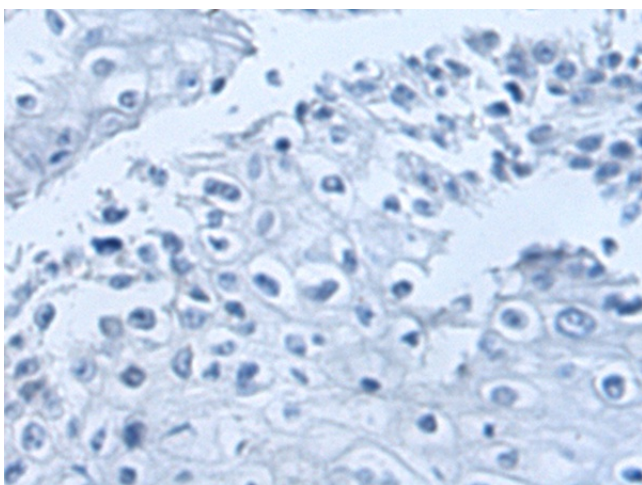
Immunohistochemistry of paraffin-embedded
Human liver cancer tissue using [TA370996] (SIL1
Antibody) at dilution 1/130 (Original
magnification: $\times 200$)



Immunohistochemistry of paraffin-embedded Human liver cancer tissue using [TA370996] (SIL1 Antibody) at dilution 1/130, treated with fusion protein. (Original magnification: x200)



Immunohistochemistry of paraffin-embedded Human esophagus cancer tissue using [TA370996] (SIL1 Antibody) at dilution 1/130 (Original magnification: x200)



Immunohistochemistry of paraffin-embedded Human esophagus cancer tissue using [TA370996] (SIL1 Antibody) at dilution 1/130, treated with fusion protein. (Original magnification: x200)