

## Product datasheet for **TA370995S**

### LXR beta (NR1H2) Rabbit Polyclonal Antibody

#### Product data:

Product Type:	Primary Antibodies
Applications:	IHC, WB
Recommended Dilution:	WB: 200-1000 WB positive control: Rat liver tissue and Mouse liver tissue lysates IHC: 100-300 Positive control: Human thyroid cancer Predicted cell location: Nucleus
Reactivity:	Human, Mouse, Rat
Host:	Rabbit
Isotype:	IgG
Clonality:	Polyclonal
Immunogen:	Fusion protein of human NR1H2
Formulation:	pH7.4 PBS, 0.05% NaN <sub>3</sub> , 40% Glycerol
Purification:	Antigen affinity purification
Conjugation:	Unconjugated
Storage:	Store at -20°C.
Stability:	1 year
Predicted Protein Size:	51 kDa
Gene Name:	nuclear receptor subfamily 1 group H member 2
Database Link:	<a href="#">Entrez Gene 7376 Human P55055</a>



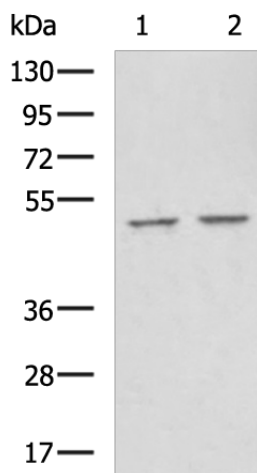
[View online »](#)

**Background:**

The liver X receptors, LXRA (NR1H3; MIM 602423) and LXRβ, form a subfamily of the nuclear receptor superfamily and are key regulators of macrophage function, controlling transcriptional programs involved in lipid homeostasis and inflammation. The inducible LXRA is highly expressed in liver, adrenal gland, intestine, adipose tissue, macrophages, lung, and kidney, whereas LXRβ is ubiquitously expressed. Ligand-activated LXRs form obligate heterodimers with retinoid X receptors (RXRs; see MIM 180245) and regulate expression of target genes containing LXR response elements (summary by Korf et al., 2009 [PubMed 19436111]).

**Synonyms:**

LXR-b; LXRβ; NER; NER-I; RIP15; UNR

**Product images:**

Gel: 8%SDS-PAGE

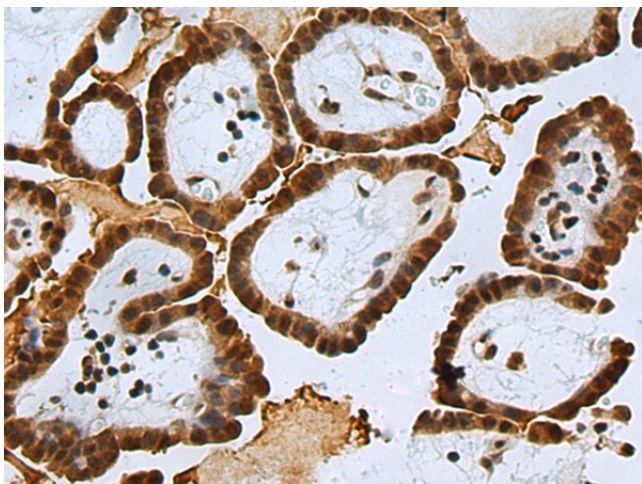
Lysate: 40 µg

Lane 1-2: Rat liver tissue and Mouse liver tissue lysates

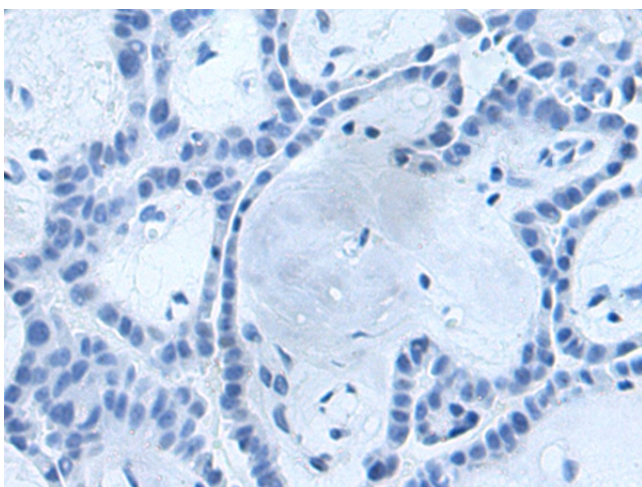
Primary antibody: [TA370995] (NR1H2 Antibody) at dilution 1/400

Secondary antibody: Goat anti rabbit IgG at 1/5000 dilution

Exposure time: 1 minute



Immunohistochemistry of paraffin-embedded Human thyroid cancer tissue using [TA370995] (NR1H2 Antibody) at dilution 1/120 (Original magnification: ×200)



Immunohistochemistry of paraffin-embedded Human thyroid cancer tissue using [TA370995] (NR1H2 Antibody) at dilution 1/120, treated with fusion protein. (Original magnification: ×200)