

Product datasheet for **TA370990**

DNA Polymerase beta (POLB) Rabbit Polyclonal Antibody

Product data:

Product Type:	Primary Antibodies
Applications:	IHC, WB
Recommended Dilution:	WB: 500-2000 WB positive control: K562, Hela cell lysates IHC: 100-300 Positive control: Human brain Predicted cell location: Nucleus
Reactivity:	Human, Mouse, Rat
Host:	Rabbit
Isotype:	IgG
Clonality:	Polyclonal
Immunogen:	Fusion protein of human POLB
Formulation:	pH7.4 PBS, 0.05% NaN ₃ , 40% Glycerol
Concentration:	lot specific
Purification:	Antigen affinity purification
Conjugation:	Unconjugated
Storage:	Store at -20°C.
Stability:	1 year
Predicted Protein Size:	38 kDa
Gene Name:	polymerase (DNA) beta
Database Link:	Entrez Gene 5423 Human P06746

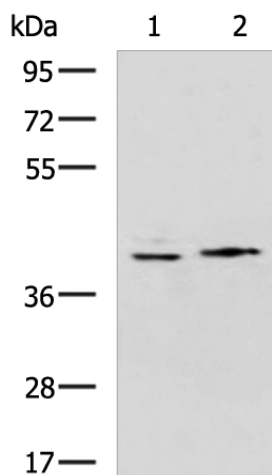
Background: The protein encoded by this gene is a DNA polymerase involved in base excision and repair, also called gap-filling DNA synthesis. The encoded protein, acting as a monomer, is normally found in the cytoplasm, but it translocates to the nucleus upon DNA damage. Several transcript variants of this gene exist, but the full-length nature of only one has been described to date. [provided by RefSeq, Sep 2011]

Synonyms: MGC125976

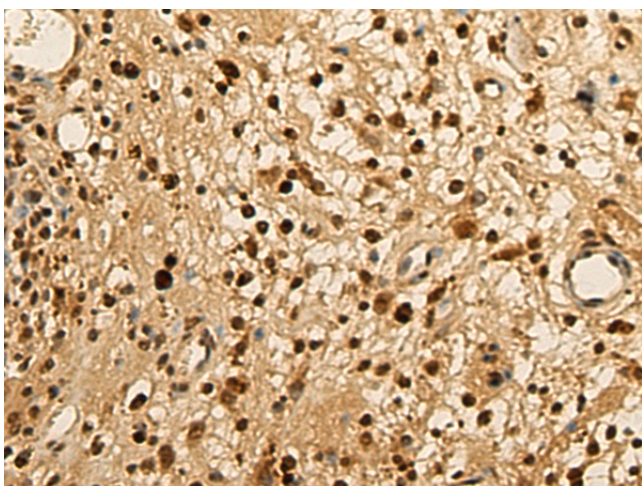


[View online »](#)

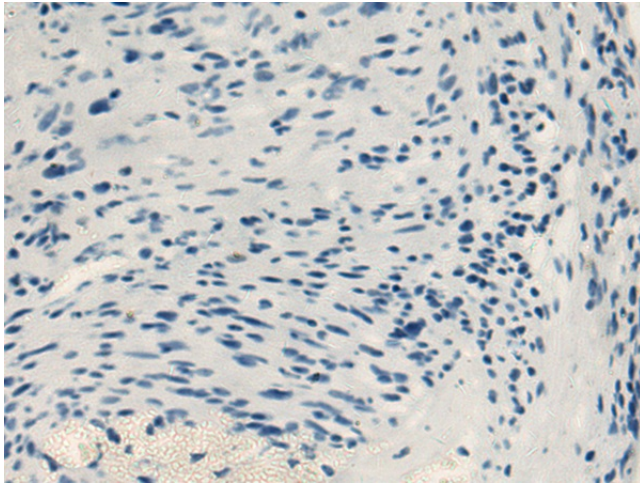
Product images:



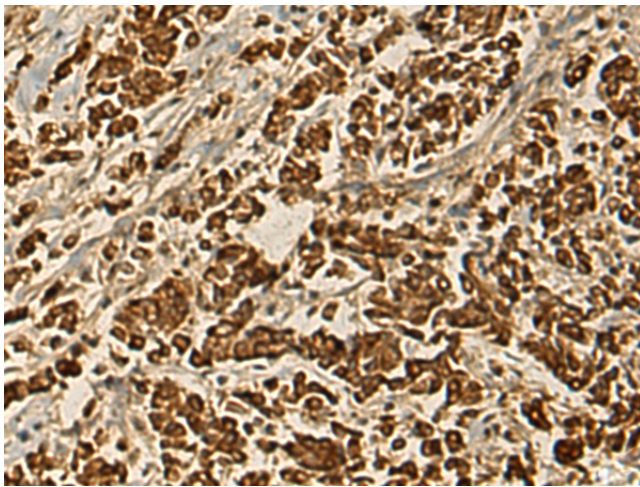
Gel: 8%SDS-PAGE
Lysate: 40 μ g
Lane 1-2: K562
Hela cell lysates
Primary antibody: TA370990 (POLB Antibody) at dilution 1/800
Secondary antibody: Goat anti rabbit IgG at 1/5000 dilution
Exposure time: 1 minute



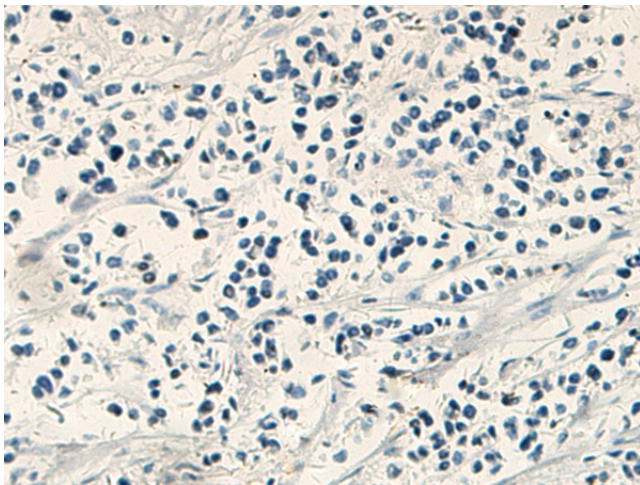
Immunohistochemistry of paraffin-embedded Human brain tissue using TA370990 (POLB Antibody) at dilution 1/135 (Original magnification: $\times 200$)



Immunohistochemistry of paraffin-embedded Human brain tissue using TA370990 (POLB Antibody) at dilution 1/135, treated with fusion protein. (Original magnification: $\times 200$)



Immunohistochemistry of paraffin-embedded Human breast cancer tissue using TA370990 (POLB Antibody) at dilution 1/135 (Original magnification: $\times 200$)



Immunohistochemistry of paraffin-embedded Human breast cancer tissue using TA370990 (POLB Antibody) at dilution 1/135, treated with fusion protein. (Original magnification: $\times 200$)