

## Product datasheet for **TA370987**

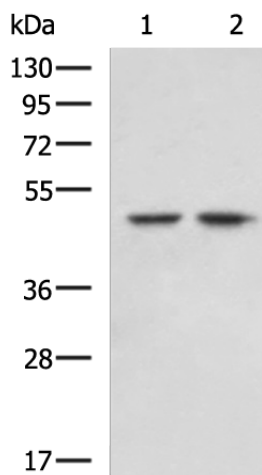
### IQCC Rabbit Polyclonal Antibody

#### Product data:

Product Type:	Primary Antibodies
Applications:	IHC, WB
Recommended Dilution:	WB: 500-2000 WB positive control: LOVO and 293T cell lysates IHC: 100-300 Positive control: Human esophagus cancer Predicted cell location: Cytoplasm
Reactivity:	Human
Host:	Rabbit
Isotype:	IgG
Clonality:	Polyclonal
Immunogen:	Fusion protein of human IQCC
Formulation:	pH7.4 PBS, 0.05% NaN <sub>3</sub> , 40% Glycerol
Concentration:	lot specific
Purification:	Antigen affinity purification
Conjugation:	Unconjugated
Storage:	Store at -20°C.
Stability:	1 year
Predicted Protein Size:	53 kDa
Gene Name:	IQ motif containing C
Database Link:	<a href="#">Entrez Gene 55721 Human Q4KMZ1</a>
Background:	The function of this protein remains unknown.
Synonyms:	FLJ10547; MGC120341; RP4-622L5.6



[View online »](#)

**Product images:**


Gel: 8%SDS-PAGE

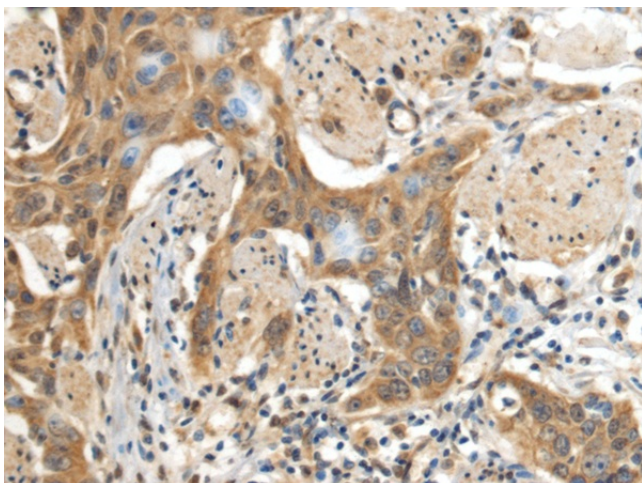
Lysate: 40 µg

Lane 1-2: LOVO and 293T cell lysates

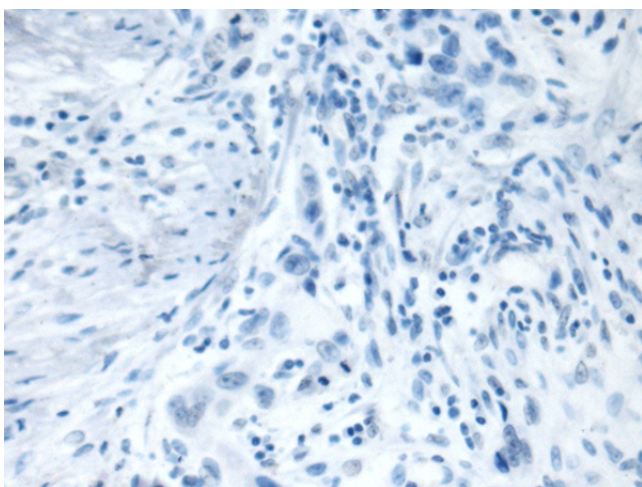
Primary antibody: TA370987 (IQCC Antibody) at dilution 1/1000

Secondary antibody: Goat anti rabbit IgG at 1/5000 dilution

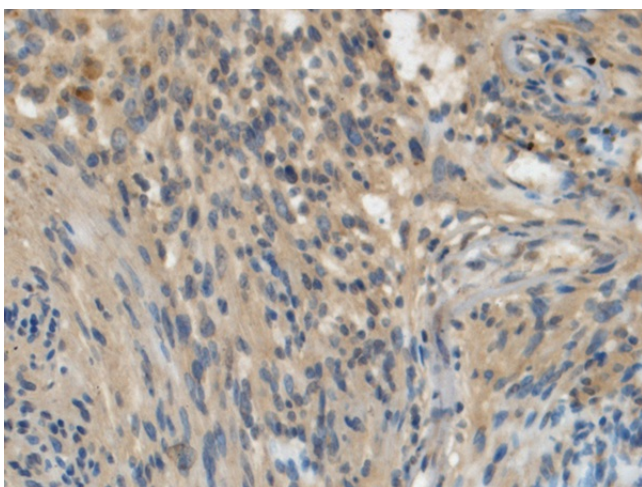
Exposure time: 10 seconds



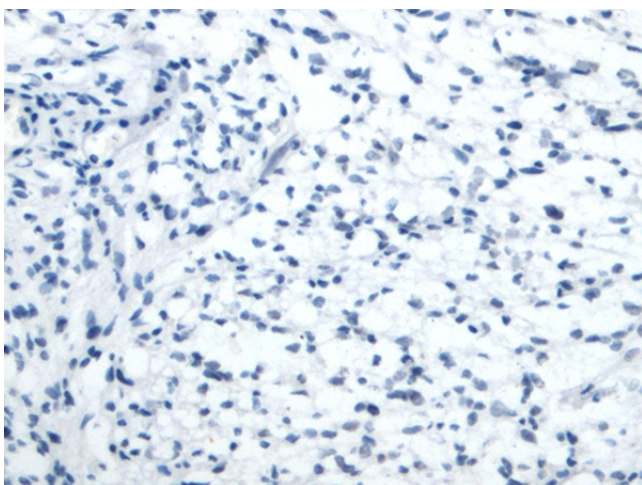
Immunohistochemistry of paraffin-embedded Human esophagus cancer tissue using TA370987 (IQCC Antibody) at dilution 1/130 (Original magnification: ×200)



Immunohistochemistry of paraffin-embedded Human esophagus cancer tissue using TA370987 (IQCC Antibody) at dilution 1/130, treated with fusion protein. (Original magnification: ×200)



Immunohistochemistry of paraffin-embedded Human brain tissue using TA370987 (IQCC Antibody) at dilution 1/130 (Original magnification: ×200)



Immunohistochemistry of paraffin-embedded Human brain tissue using TA370987 (IQCC Antibody) at dilution 1/130, treated with fusion protein. (Original magnification: ×200)