

Product datasheet for **TA370984**

KBTBD8 Rabbit Polyclonal Antibody

Product data:

Product Type:	Primary Antibodies
Applications:	IHC, WB
Recommended Dilution:	WB: 1000-5000 WB positive control: NIH/3T3 cell lysate IHC: 150-300 Positive control: Human liver cancer Predicted cell location: Cytoplasm
Reactivity:	Human, Mouse, Rat
Host:	Rabbit
Isotype:	IgG
Clonality:	Polyclonal
Immunogen:	Fusion protein of human KBTBD8
Formulation:	pH7.4 PBS, 0.05% NaN ₃ , 40% Glycerol
Concentration:	lot specific
Purification:	Antigen affinity purification
Conjugation:	Unconjugated
Storage:	Store at -20°C.
Stability:	1 year
Predicted Protein Size:	69 kDa
Gene Name:	kelch repeat and BTB domain containing 8
Database Link:	Entrez Gene 84541 Human Q8NFY9

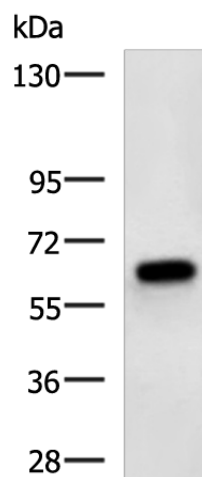
Background: Substrate-specific adapter of a BCR (BTB-CUL3-RBX1) E3 ubiquitin ligase complex that acts as a regulator of neural crest specification. The BCR(KBTBD8) complex acts by mediating monoubiquitination of NOLC1 and TCOF1: monoubiquitination promotes the formation of a NOLC1-TCOF1 complex that acts as a platform to connect RNA polymerase I with enzymes responsible for ribosomal processing and modification, leading to remodel the translational program of differentiating cells in favor of neural crest specification.



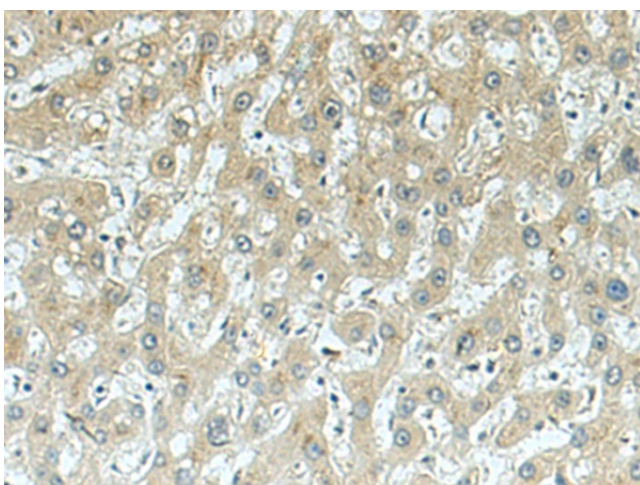
[View online »](#)

Synonyms: FLJ57592; KIAA1842; TA-KRP; TAKRP

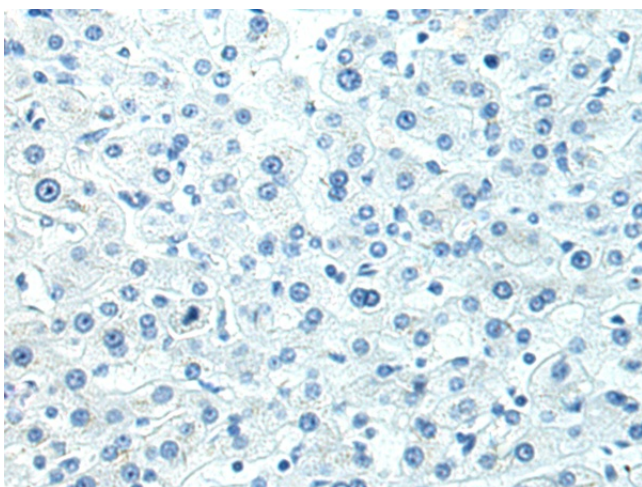
Product images:



Gel: 6%SDS-PAGE
Lysate: 40 µg
Lane: NIH/3T3 cell lysate
Primary antibody: TA370984 (KBTD8 Antibody)
at dilution 1/1000
Secondary antibody: Goat anti rabbit IgG at
1/5000 dilution
Exposure time: 5 seconds



Immunohistochemistry of paraffin-embedded
Human liver cancer tissue using TA370984
(KBTD8 Antibody) at dilution 1/160 (Original
magnification: x200)



Immunohistochemistry of paraffin-embedded Human liver cancer tissue using TA370984 (KBTD8 Antibody) at dilution 1/160, treated with fusion protein. (Original magnification: ×200)