

## Product datasheet for **TA370979S**

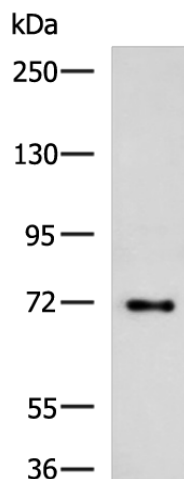
### TTLL10 Rabbit Polyclonal Antibody

#### Product data:

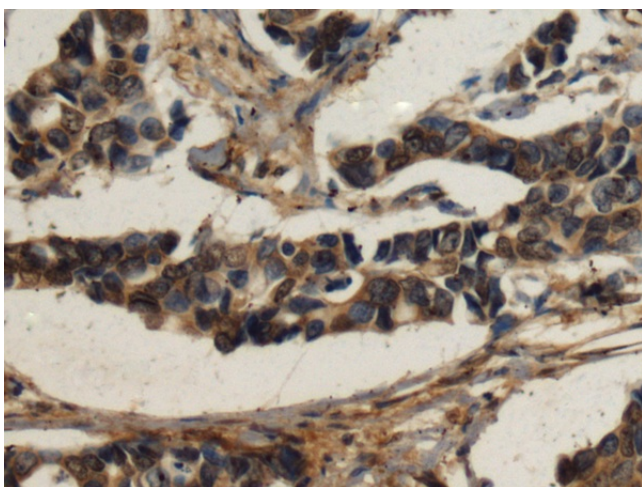
Product Type:	Primary Antibodies
Applications:	IHC, WB
Recommended Dilution:	WB: 500-2000 WB positive control: HepG2 cell lysate IHC: 150-300 Positive control: Human breast cancer Predicted cell location: Cytoplasm
Reactivity:	Human
Host:	Rabbit
Isotype:	IgG
Clonality:	Polyclonal
Immunogen:	Fusion protein of human TTLL10
Formulation:	pH7.4 PBS, 0.05% NaN <sub>3</sub> , 40% Glycerol
Purification:	Antigen affinity purification
Conjugation:	Unconjugated
Storage:	Store at -20°C.
Stability:	1 year
Predicted Protein Size:	75 kDa
Gene Name:	tubulin tyrosine ligase like 10
Database Link:	<a href="#">Entrez Gene 254173 Human Q6ZVT0</a>
Background:	Inactive polyglycylase.
Synonyms:	FLJ36119; FLJ42131; TTLL5



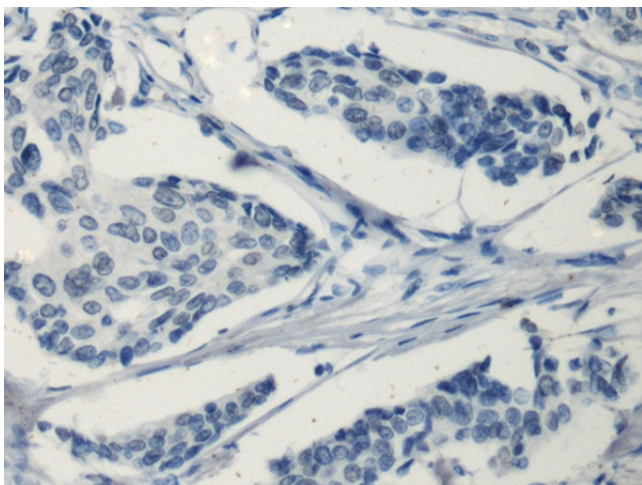
[View online »](#)

**Product images:**


Gel: 6%SDS-PAGE  
 Lysate: 40 µg  
 Lane: HepG2 cell lysate  
 Primary antibody: [TA370979] (TTLL10 Antibody)  
 at dilution 1/850  
 Secondary antibody: Goat anti rabbit IgG at  
 1/5000 dilution  
 Exposure time: 1 minute



Immunohistochemistry of paraffin-embedded  
 Human breast cancer tissue using [TA370979]  
 (TTLL10 Antibody) at dilution 1/110 (Original  
 magnification: ×200)



Immunohistochemistry of paraffin-embedded Human breast cancer tissue using [TA370979] (TTLL10 Antibody) at dilution 1/110, treated with fusion protein. (Original magnification:  $\times 200$ )