

Product datasheet for **TA370977S**

ENDOGL1 (EXOG) Rabbit Polyclonal Antibody

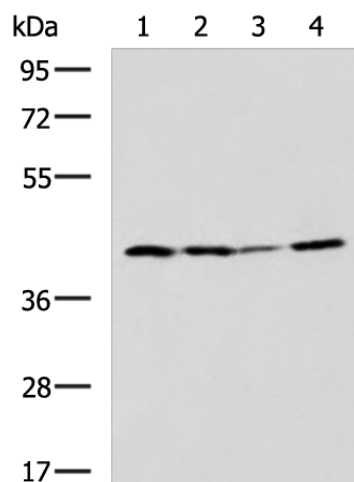
Product data:

Product Type:	Primary Antibodies
Applications:	IHC, WB
Recommended Dilution:	WB: 500-2000 WB positive control: K562, LOVO, HT-29, HUVEC cell lysates IHC: 150-300 Positive control: Human colorectal cancer Predicted cell location: Cytoplasm
Reactivity:	Human, Mouse
Host:	Rabbit
Isotype:	IgG
Clonality:	Polyclonal
Immunogen:	Fusion protein of human EXOG
Formulation:	pH7.4 PBS, 0.05% NaN ₃ , 40% Glycerol
Purification:	Antigen affinity purification
Conjugation:	Unconjugated
Storage:	Store at -20°C.
Stability:	1 year
Predicted Protein Size:	41 kDa
Gene Name:	endo/exonuclease (5'-3'), endonuclease G-like
Database Link:	Entrez Gene 9941 Human Q9Y2C4
Background:	This gene encodes an endo/exonuclease with 5'-3' exonuclease activity. The encoded enzyme catalyzes the hydrolysis of ester linkages at the 5' end of a nucleic acid chain. This enzyme is localized to the mitochondria and may play a role in programmed cell death. Alternatively spliced transcript variants have been described. A pseudogene exists on chromosome 18. [provided by RefSeq, Feb 2009]
Synonyms:	ENDOGL1; ENDOGL2; ENGL; ENGL-a; ENGL-b; ENGLA; ENGLB; MGC125944; MGC125945



[View online »](#)

Product images:



Gel: 8%SDS-PAGE

Lysate: 40 μ g

Lane 1-4: K562

LOVO

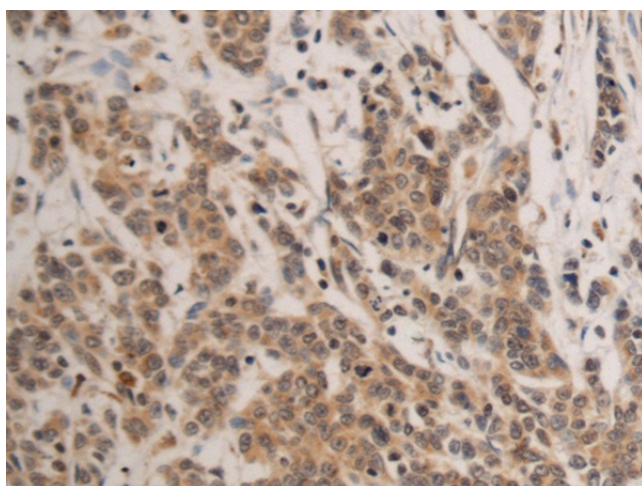
HT-29

HUVEC cell lysates

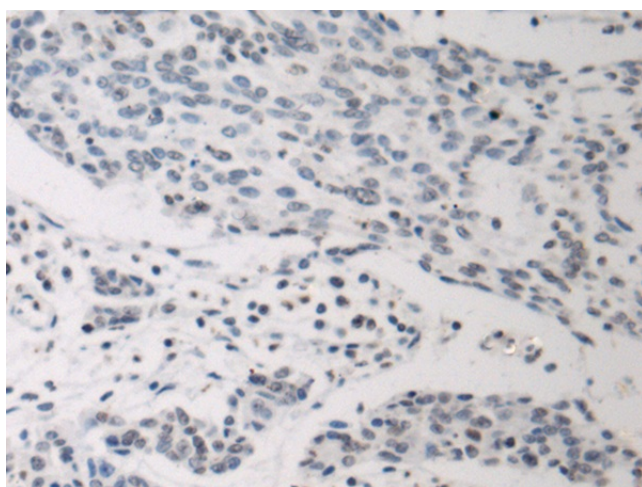
Primary antibody: [TA370977] (EXOG Antibody) at dilution 1/800

Secondary antibody: Goat anti rabbit IgG at 1/5000 dilution

Exposure time: 1 minute



Immunohistochemistry of paraffin-embedded Human colorectal cancer tissue using [TA370977] (EXOG Antibody) at dilution 1/135 (Original magnification: $\times 200$)



Immunohistochemistry of paraffin-embedded Human colorectal cancer tissue using [TA370977] (EXOG Antibody) at dilution 1/135, treated with fusion protein. (Original magnification: $\times 200$)