

Product datasheet for **TA370976**

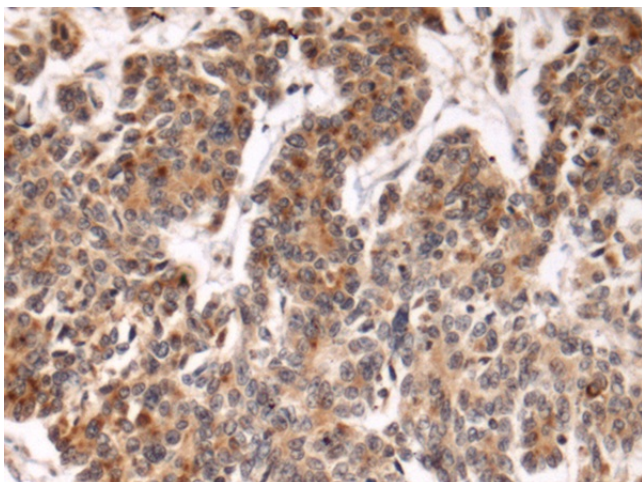
FBXL21P Rabbit Polyclonal Antibody

Product data:

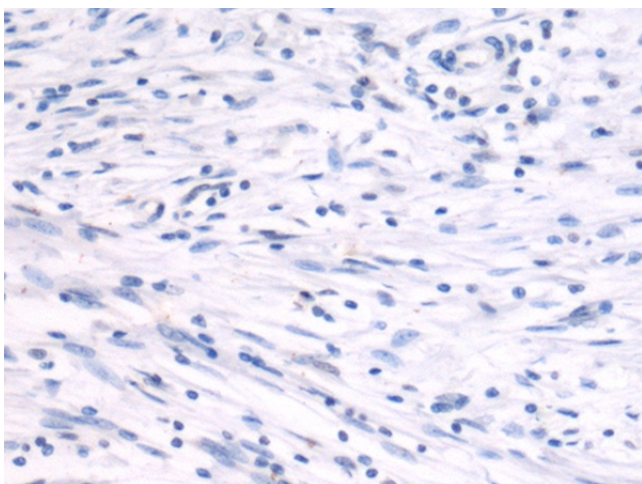
Product Type:	Primary Antibodies
Applications:	IHC
Recommended Dilution:	IHC: 100-300 Positive control: Human colorectal cancer Predicted cell location: Cytoplasm
Reactivity:	Human
Host:	Rabbit
Isotype:	IgG
Clonality:	Polyclonal
Immunogen:	Fusion protein of human FBXL21P
Formulation:	pH7.4 PBS, 0.05% NaN ₃ , 40% Glycerol
Concentration:	lot specific
Purification:	Antigen affinity purification
Conjugation:	Unconjugated
Storage:	Store at -20°C.
Stability:	1 year
Gene Name:	F-box and leucine-rich repeat protein 21 (gene/pseudogene)
Database Link:	Entrez Gene 26223 Human Q9UKT6
Background:	This locus represents a transcribed pseudogene that is related to genes encoding members of the F-box family of proteins. [provided by RefSeq, Nov 2017]
Synonyms:	FBL3; FBL3B; FBL21; FBXL3B; FBXL3P; MGC120237



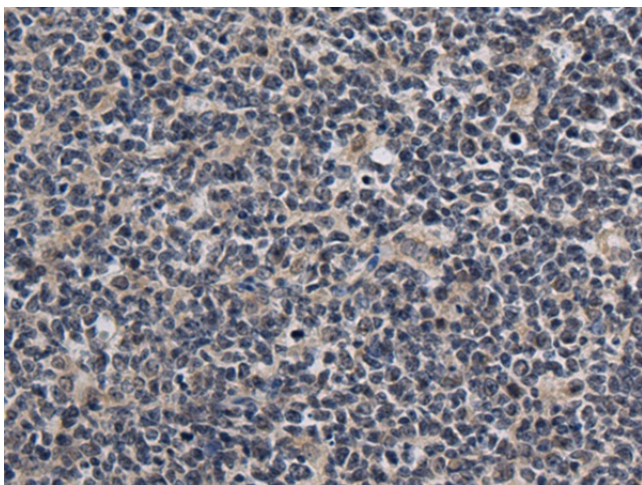
[View online »](#)

Product images:

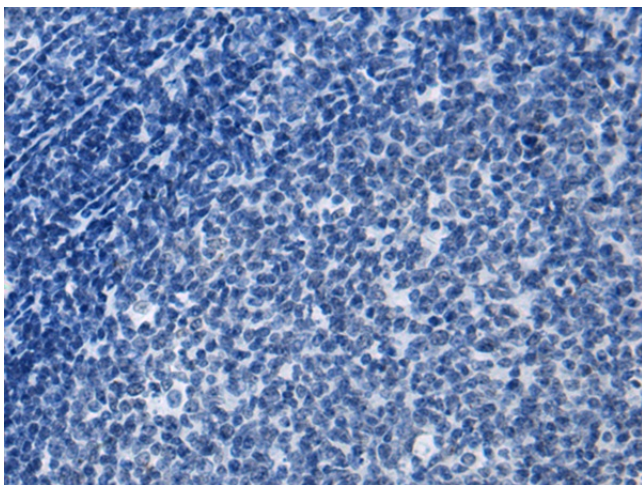
Immunohistochemistry of paraffin-embedded Human colorectal cancer tissue using TA370976 (FBXL21P Antibody) at dilution 1/100 (Original magnification: $\times 200$)



Immunohistochemistry of paraffin-embedded Human colorectal cancer tissue using TA370976 (FBXL21P Antibody) at dilution 1/100, treated with fusion protein. (Original magnification: $\times 200$)



Immunohistochemistry of paraffin-embedded Human tonsil tissue using TA370976 (FBXL21P Antibody) at dilution 1/100 (Original magnification: $\times 200$)



Immunohistochemistry of paraffin-embedded Human tonsil tissue using TA370976 (FBXL21P Antibody) at dilution 1/100, treated with fusion protein. (Original magnification: $\times 200$)