

Product datasheet for **TA370974**

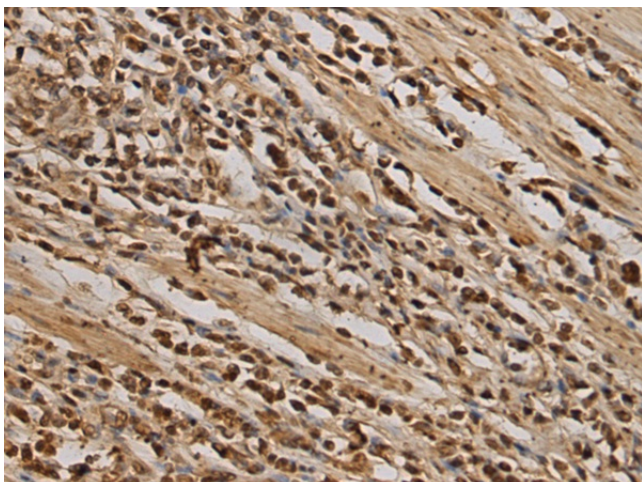
LBH Rabbit Polyclonal Antibody

Product data:

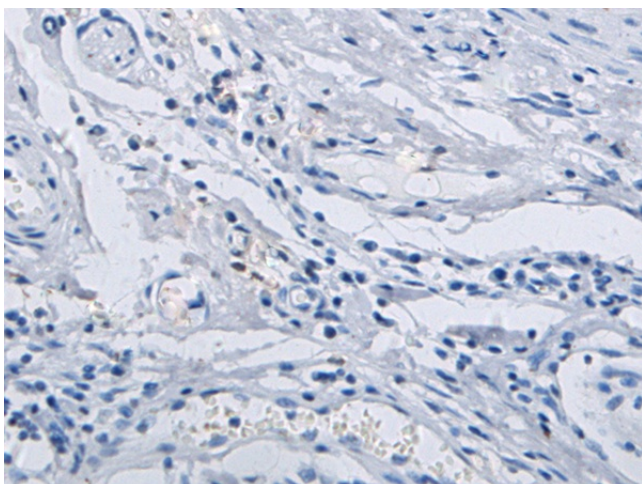
| | |
|-----------------------|--|
| Product Type: | Primary Antibodies |
| Applications: | IHC |
| Recommended Dilution: | IHC: 200-400 Positive control: Human gastric cancer Predicted cell location: Nucleus and Cytoplasm |
| Reactivity: | Human, Mouse |
| Host: | Rabbit |
| Isotype: | IgG |
| Clonality: | Polyclonal |
| Immunogen: | Fusion protein of human LBH |
| Formulation: | pH7.4 PBS, 0.05% NaN ₃ , 40% Glycerol |
| Concentration: | lot specific |
| Purification: | Antigen affinity purification |
| Conjugation: | Unconjugated |
| Storage: | Store at -20°C. |
| Stability: | 1 year |
| Gene Name: | limb bud and heart development |
| Database Link: | Entrez Gene 81606 Human Q53QV2 |
| Background: | Transcriptional activator which may act in mitogen-activated protein kinase signaling pathway. |
| Synonyms: | DKFZp566j091; hLBH; MGC104312; MGC163287 |



[View online »](#)

Product images:

Immunohistochemistry of paraffin-embedded Human gastric cancer tissue using TA370974 (LBH Antibody) at dilution 1/180 (Original magnification: $\times 200$)



Immunohistochemistry of paraffin-embedded Human gastric cancer tissue using TA370974 (LBH Antibody) at dilution 1/180, treated with fusion protein. (Original magnification: $\times 200$)