

## Product datasheet for **TA370970S**

### FCSK Rabbit Polyclonal Antibody

#### Product data:

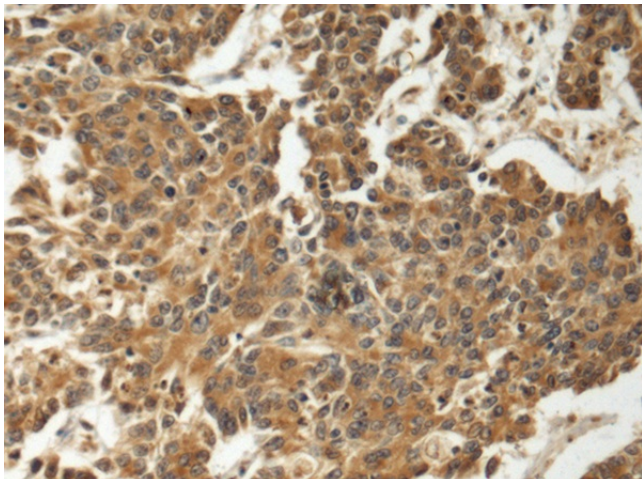
Product Type:	Primary Antibodies
Applications:	IHC
Recommended Dilution:	IHC: 150-300 Positive control: Human colorectal cancer Predicted cell location: Cytoplasm
Reactivity:	Human, Mouse
Host:	Rabbit
Isotype:	IgG
Clonality:	Polyclonal
Immunogen:	Fusion protein of human FCSK
Formulation:	pH7.4 PBS, 0.05% NaN <sub>3</sub> , 40% Glycerol
Purification:	Antigen affinity purification
Conjugation:	Unconjugated
Storage:	Store at -20°C.
Stability:	1 year
Gene Name:	fucokinase
Database Link:	<a href="#">Entrez Gene 197258 Human Q8NOW3</a>

**Background:** The protein encoded by this gene belongs to the GHMP (galacto-, homoserine, mevalonate and phosphomevalonate) kinase family and catalyzes the phosphorylation of L-fucose to form beta-L-fucose 1-phosphate. This enzyme catalyzes the first step in the utilization of free L-fucose in glycoprotein and glycolipid synthesis. L-fucose may be important in mediating a number of cell-cell interactions such as blood group antigen recognition, inflammation, and metastasis. While several transcript variants may exist for this gene, the full-length nature of only one has been described to date. [provided by RefSeq, Jul 2008]

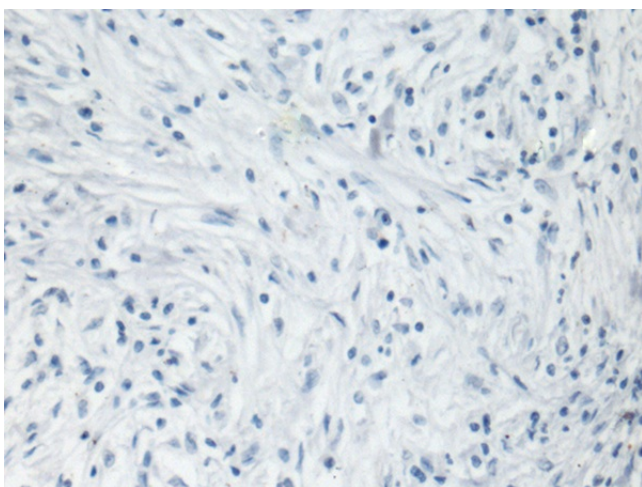
**Synonyms:** 1110046B12Rik; FLJ39408; fucokinase



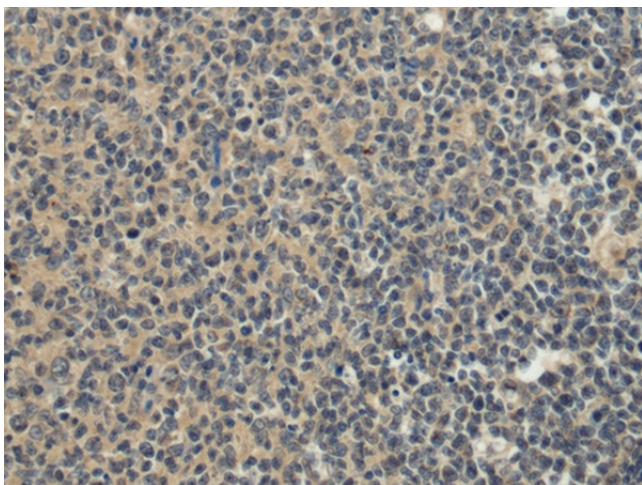
[View online »](#)

**Product images:**

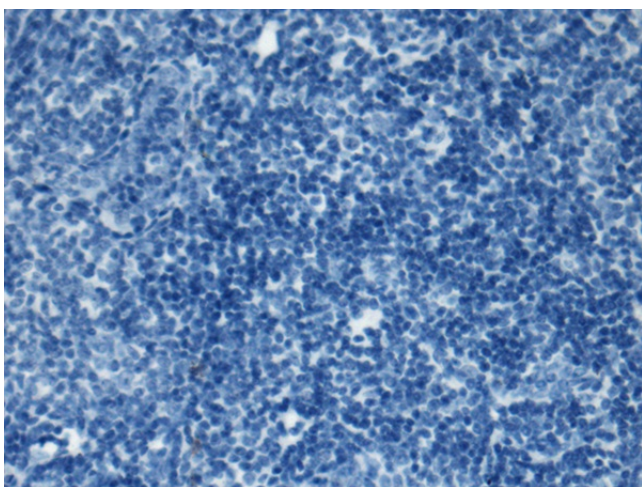
Immunohistochemistry of paraffin-embedded Human colorectal cancer tissue using [TA370970] (FCSK Antibody) at dilution 1/140 (Original magnification:  $\times 200$ )



Immunohistochemistry of paraffin-embedded Human colorectal cancer tissue using [TA370970] (FCSK Antibody) at dilution 1/140, treated with fusion protein. (Original magnification:  $\times 200$ )



Immunohistochemistry of paraffin-embedded Human tonsil tissue using [TA370970] (FCSK Antibody) at dilution 1/140 (Original magnification: x200)



Immunohistochemistry of paraffin-embedded Human tonsil tissue using [TA370970] (FCSK Antibody) at dilution 1/140, treated with fusion protein. (Original magnification: x200)