

## Product datasheet for **TA370966S**

### **RILPL1 Rabbit Polyclonal Antibody**

#### **Product data:**

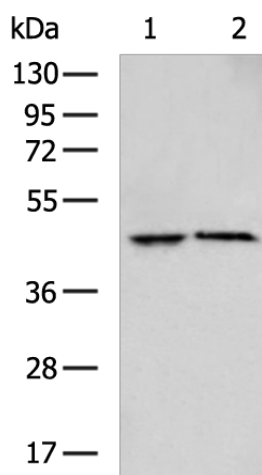
Product Type:	Primary Antibodies
Applications:	IHC, WB
Recommended Dilution:	WB: 500-2000 WB positive control: Mouse heart tissue, Mouse brain tissue lysates IHC: 50-200 Positive control: Human esophagus cancer Predicted cell location: Cytoplasm
Reactivity:	Human, Mouse, Rat
Host:	Rabbit
Isotype:	IgG
Clonality:	Polyclonal
Immunogen:	Fusion protein of human RILPL1
Formulation:	pH7.4 PBS, 0.05% NaN <sub>3</sub> , 40% Glycerol
Purification:	Antigen affinity purification
Conjugation:	Unconjugated
Storage:	Store at -20°C.
Stability:	1 year
Predicted Protein Size:	47 kDa
Gene Name:	Rab interacting lysosomal protein-like 1
Database Link:	<a href="#">Entrez Gene 353116 Human Q5EBL4</a>
Background:	Plays a role in the regulation of cell shape and polarity (By similarity). Plays a role in cellular protein transport, including protein transport away from primary cilia (By similarity). Neuroprotective protein, which acts by sequestering GAPDH in the cytosol and prevent the apoptotic function of GAPDH in the nucleus (By similarity). Competes with SIAH1 for binding GAPDH (By similarity). Does not regulate lysosomal morphology and distribution (PubMed:14668488). Binds to RAB10 following LRRK2-mediated RAB10 phosphorylation which leads to inhibition of ciliogenesis (PubMed:30398148).



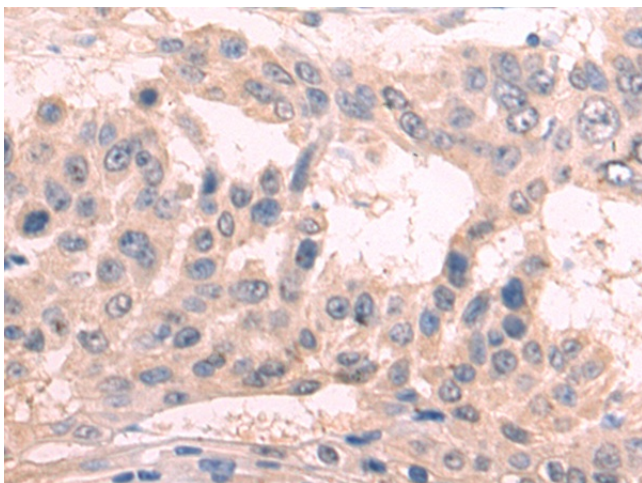
[View online »](#)

**Synonyms:** FLJ39378; MGC99793; MGC105128

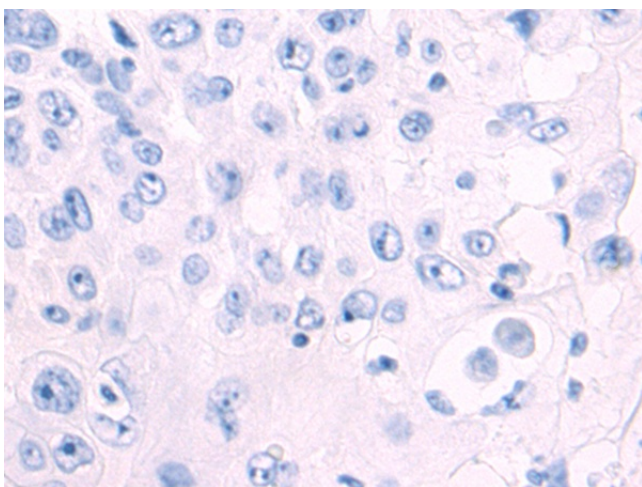
**Product images:**



Gel: 8%SDS-PAGE  
Lysate: 40 µg  
Lane 1-2: Mouse heart tissue  
Mouse brain tissue lysates  
Primary antibody: [TA370966] (RILPL1 Antibody)  
at dilution 1/700  
Secondary antibody: Goat anti rabbit IgG at  
1/5000 dilution  
Exposure time: 20 seconds



Immunohistochemistry of paraffin-embedded  
Human esophagus cancer tissue using  
[TA370966] (RILPL1 Antibody) at dilution 1/75  
(Original magnification: ×200)



Immunohistochemistry of paraffin-embedded Human esophagus cancer tissue using [TA370966] (RILPL1 Antibody) at dilution 1/75, treated with fusion protein. (Original magnification: ×200)