

Product datasheet for **TA370966**

RILPL1 Rabbit Polyclonal Antibody

Product data:

Product Type:	Primary Antibodies
Applications:	IHC, WB
Recommended Dilution:	WB: 500-2000 WB positive control: Mouse heart tissue, Mouse brain tissue lysates IHC: 50-200 Positive control: Human esophagus cancer Predicted cell location: Cytoplasm
Reactivity:	Human, Mouse, Rat
Host:	Rabbit
Isotype:	IgG
Clonality:	Polyclonal
Immunogen:	Fusion protein of human RILPL1
Formulation:	pH7.4 PBS, 0.05% NaN ₃ , 40% Glycerol
Concentration:	lot specific
Purification:	Antigen affinity purification
Conjugation:	Unconjugated
Storage:	Store at -20°C.
Stability:	1 year
Predicted Protein Size:	47 kDa
Gene Name:	Rab interacting lysosomal protein-like 1
Database Link:	Entrez Gene 353116 Human Q5EBL4



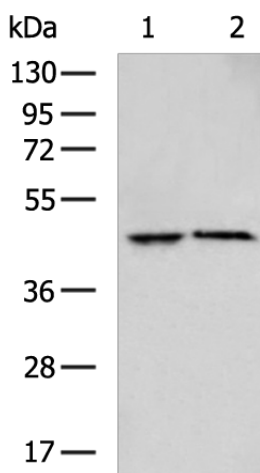
[View online »](#)

Background:

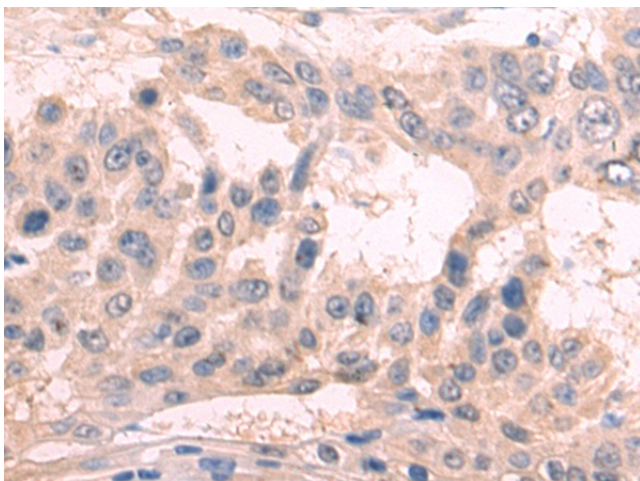
Plays a role in the regulation of cell shape and polarity (By similarity). Plays a role in cellular protein transport, including protein transport away from primary cilia (By similarity). Neuroprotective protein, which acts by sequestering GAPDH in the cytosol and prevent the apoptotic function of GAPDH in the nucleus (By similarity). Competes with SIAH1 for binding GAPDH (By similarity). Does not regulate lysosomal morphology and distribution (PubMed:14668488). Binds to RAB10 following LRRK2-mediated RAB10 phosphorylation which leads to inhibition of ciliogenesis (PubMed:30398148).

Synonyms:

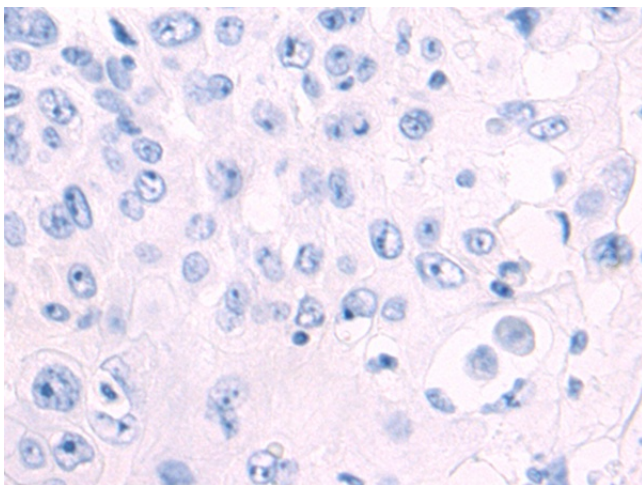
FLJ39378; MGC99793; MGC105128

Product images:


Gel: 8%SDS-PAGE
Lysate: 40 µg
Lane 1-2: Mouse heart tissue
Mouse brain tissue lysates
Primary antibody: TA370966 (RILPL1 Antibody) at dilution 1/700
Secondary antibody: Goat anti rabbit IgG at 1/5000 dilution
Exposure time: 20 seconds



Immunohistochemistry of paraffin-embedded Human esophagus cancer tissue using TA370966 (RILPL1 Antibody) at dilution 1/75 (Original magnification: ×200)



Immunohistochemistry of paraffin-embedded Human esophagus cancer tissue using TA370966 (RILPL1 Antibody) at dilution 1/75, treated with fusion protein. (Original magnification: ×200)