

Product datasheet for **TA370960**

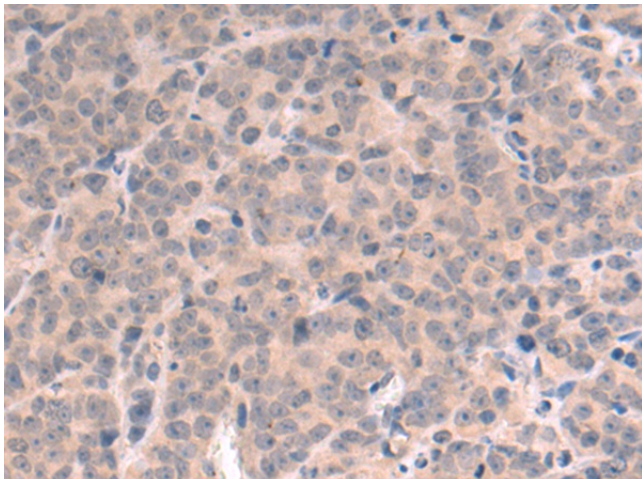
FBXO42 Rabbit Polyclonal Antibody

Product data:

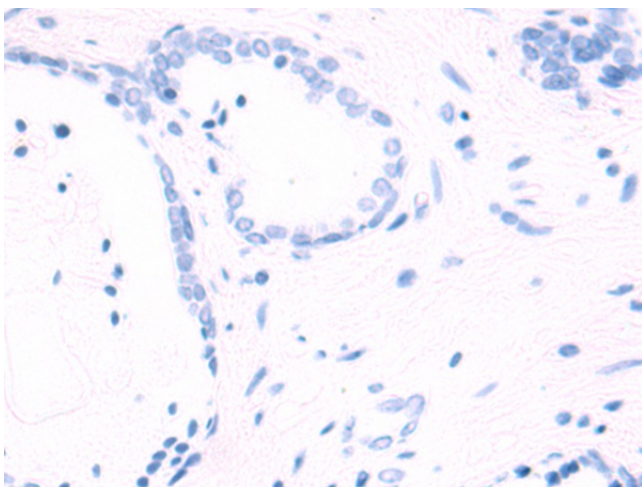
Product Type:	Primary Antibodies
Applications:	IHC
Recommended Dilution:	IHC: 100-200 Positive control: Human prostate cancer Predicted cell location: Cytoplasm and Nucleus
Reactivity:	Human, Mouse
Host:	Rabbit
Isotype:	IgG
Clonality:	Polyclonal
Immunogen:	Fusion protein of human FBXO42
Formulation:	pH7.4 PBS, 0.05% NaN ₃ , 40% Glycerol
Concentration:	lot specific
Purification:	Antigen affinity purification
Conjugation:	Unconjugated
Storage:	Store at -20°C.
Stability:	1 year
Gene Name:	F-box protein 42
Database Link:	Entrez Gene 54455 Human Q6P3S6
Background:	Members of the F-box protein family, such as FBXO42, are characterized by an approximately 40-amino acid F-box motif. SCF complexes, formed by SKP1 (SKP1A; MIM 601434), cullin (see CUL1; MIM 603134), and F-box proteins, act as protein-ubiquitin ligases. F-box proteins interact with SKP1 through the F box, and they interact with ubiquitination targets through other protein interaction domains (Jin et al., 2004 [PubMed 15520277]).
Synonyms:	Fbx42; JFK; KIAA1332



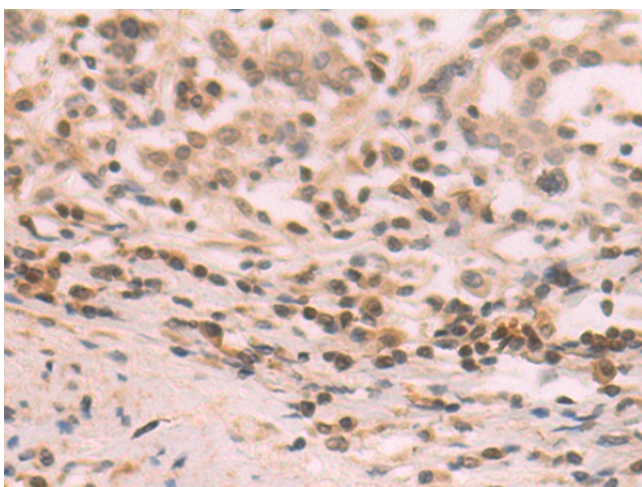
[View online »](#)

Product images:

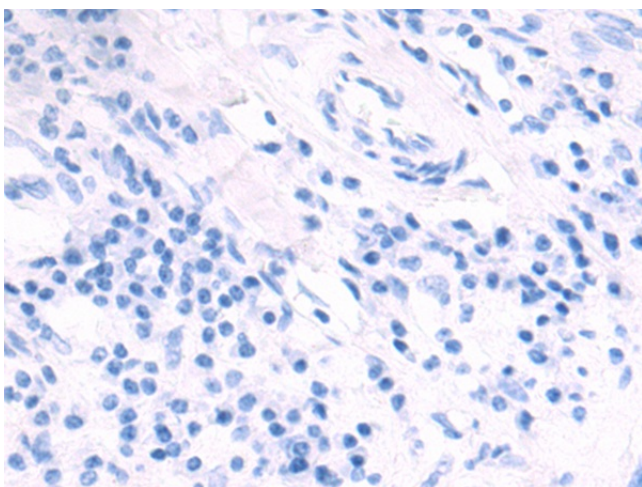
Immunohistochemistry of paraffin-embedded Human prostate cancer tissue using TA370960 (FBXO42 Antibody) at dilution 1/100 (Original magnification: $\times 200$)



Immunohistochemistry of paraffin-embedded Human prostate cancer tissue using TA370960 (FBXO42 Antibody) at dilution 1/100, treated with fusion protein. (Original magnification: $\times 200$)



Immunohistochemistry of paraffin-embedded Human gastric cancer tissue using TA370960 (FBXO42 Antibody) at dilution 1/100 (Original magnification: $\times 200$)



Immunohistochemistry of paraffin-embedded Human gastric cancer tissue using TA370960 (FBXO42 Antibody) at dilution 1/100, treated with fusion protein. (Original magnification: $\times 200$)