

Product datasheet for **TA370955S**

GBA3 Rabbit Polyclonal Antibody

Product data:

| | |
|-------------------------|---|
| Product Type: | Primary Antibodies |
| Applications: | IHC, WB |
| Recommended Dilution: | WB: 500-2000 WB positive control: LOVO cell lysate IHC: 150-300 Positive control: Human esophagus cancer Predicted cell location: Cytoplasm |
| Reactivity: | Human |
| Host: | Rabbit |
| Isotype: | IgG |
| Clonality: | Polyclonal |
| Immunogen: | Fusion protein of human GBA3 |
| Formulation: | pH7.4 PBS, 0.05% NaN ₃ , 40% Glycerol |
| Purification: | Antigen affinity purification |
| Conjugation: | Unconjugated |
| Storage: | Store at -20°C. |
| Stability: | 1 year |
| Predicted Protein Size: | 54 kDa |
| Gene Name: | glucosylceramidase beta 3 (gene/pseudogene) |
| Database Link: | Entrez Gene 57733 Human Q9H227 |

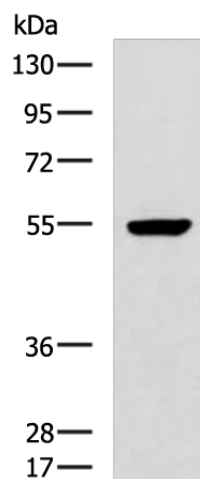
Background: The protein encoded by this gene is an enzyme that can hydrolyze several types of glycosides. This gene is a polymorphic pseudogene, with the most common allele being the functional allele that encodes the full-length protein. Some individuals, as represented by the reference genome allele, contain a single nucleotide polymorphism that results in a premature stop codon in the coding region, and therefore this allele is pseudogenic due to the failure to produce a functional full-length protein. Alternative splicing of this gene results in multiple transcript variants.



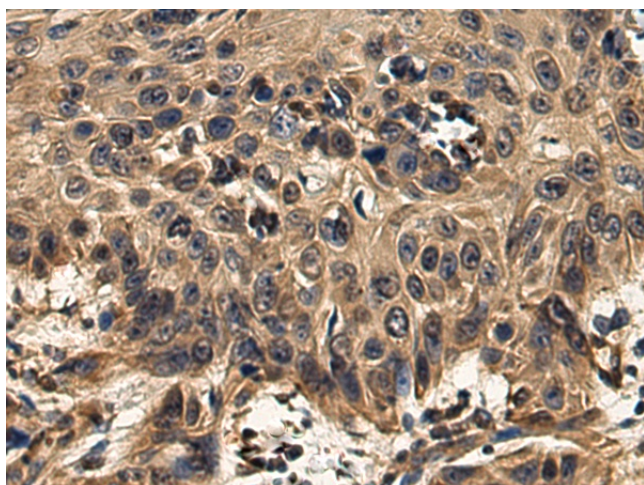
[View online »](#)

Synonyms: CBG; CBGL1; GLUC; KLrP; MGC104276; MGC126878

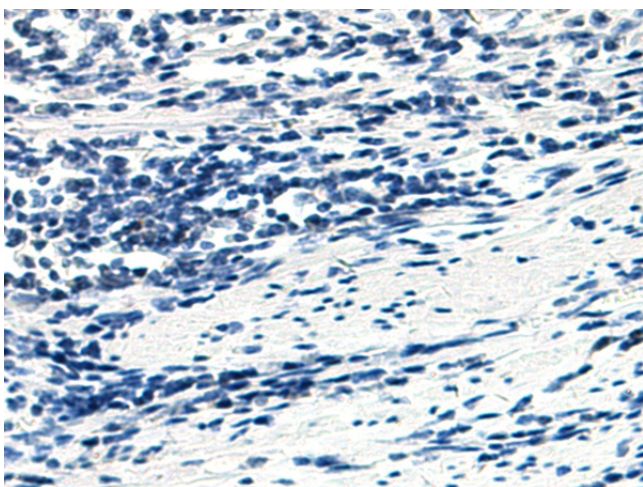
Product images:



Gel: 8%SDS-PAGE
Lysate: 40 μ g
Lane: LOVO cell lysate
Primary antibody: [TA370955] (GBA3 Antibody) at dilution 1/1000
Secondary antibody: Goat anti rabbit IgG at 1/5000 dilution
Exposure time: 1 minute



Immunohistochemistry of paraffin-embedded Human esophagus cancer tissue using [TA370955] (GBA3 Antibody) at dilution 1/160 (Original magnification: \times 200)



Immunohistochemistry of paraffin-embedded Human esophagus cancer tissue using [TA370955] (GBA3 Antibody) at dilution 1/160, treated with fusion protein. (Original magnification: $\times 200$)