

## Product datasheet for **TA370955**

### GBA3 Rabbit Polyclonal Antibody

#### Product data:

Product Type:	Primary Antibodies
Applications:	IHC, WB
Recommended Dilution:	WB: 500-2000 WB positive control: LOVO cell lysate IHC: 150-300 Positive control: Human esophagus cancer Predicted cell location: Cytoplasm
Reactivity:	Human
Host:	Rabbit
Isotype:	IgG
Clonality:	Polyclonal
Immunogen:	Fusion protein of human GBA3
Formulation:	pH7.4 PBS, 0.05% NaN <sub>3</sub> , 40% Glycerol
Concentration:	lot specific
Purification:	Antigen affinity purification
Conjugation:	Unconjugated
Storage:	Store at -20°C.
Stability:	1 year
Predicted Protein Size:	54 kDa
Gene Name:	glucosylceramidase beta 3 (gene/pseudogene)
Database Link:	<a href="#">Entrez Gene 57733 Human</a> <a href="#">Q9H227</a>



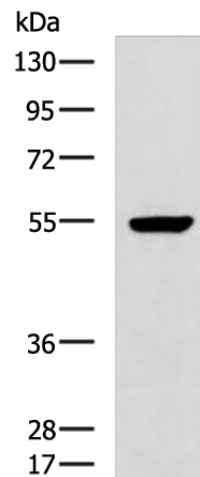
[View online »](#)

**Background:**

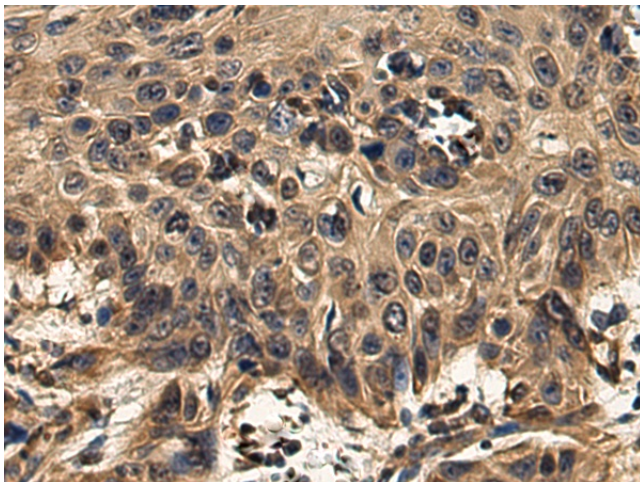
The protein encoded by this gene is an enzyme that can hydrolyze several types of glycosides. This gene is a polymorphic pseudogene, with the most common allele being the functional allele that encodes the full-length protein. Some individuals, as represented by the reference genome allele, contain a single nucleotide polymorphism that results in a premature stop codon in the coding region, and therefore this allele is pseudogenic due to the failure to produce a functional full-length protein. Alternative splicing of this gene results in multiple transcript variants.

**Synonyms:**

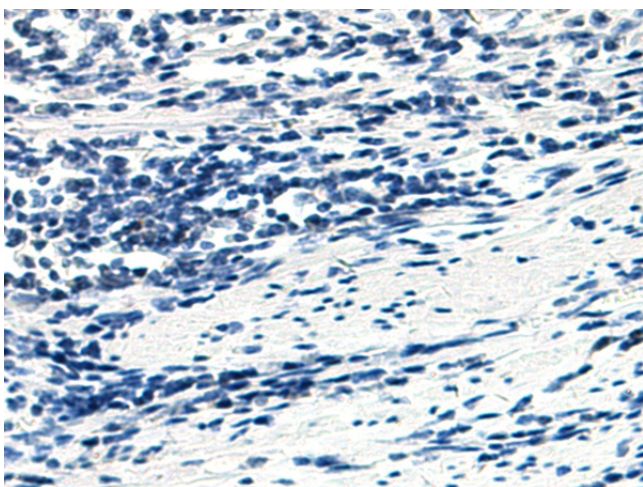
CBG; CBGL1; GLUC; KLrP; MGC104276; MGC126878

**Product images:**

Gel: 8%SDS-PAGE  
Lysate: 40 µg  
Lane: LOVO cell lysate  
Primary antibody: TA370955 (GBA3 Antibody) at dilution 1/1000  
Secondary antibody: Goat anti rabbit IgG at 1/5000 dilution  
Exposure time: 1 minute



Immunohistochemistry of paraffin-embedded Human esophagus cancer tissue using TA370955 (GBA3 Antibody) at dilution 1/160 (Original magnification: ×200)



Immunohistochemistry of paraffin-embedded Human esophagus cancer tissue using TA370955 (GBA3 Antibody) at dilution 1/160, treated with fusion protein. (Original magnification:  $\times 200$ )