

Product datasheet for **TA370953**

GLIPR2 Rabbit Polyclonal Antibody

Product data:

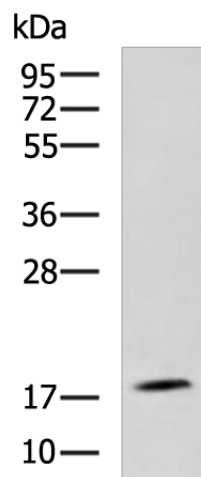
Product Type:	Primary Antibodies
Applications:	IHC, WB
Recommended Dilution:	WB: 500-2000 WB positive control: C2C12 cell lysate IHC: 150-300 Positive control: Human tonsil Predicted cell location: Cytoplasm
Reactivity:	Human, Mouse
Host:	Rabbit
Isotype:	IgG
Clonality:	Polyclonal
Immunogen:	Fusion protein of human GLIPR2
Formulation:	pH7.4 PBS, 0.05% NaN ₃ , 40% Glycerol
Concentration:	lot specific
Purification:	Antigen affinity purification
Conjugation:	Unconjugated
Storage:	Store at -20°C.
Stability:	1 year
Predicted Protein Size:	17 kDa
Gene Name:	GLI pathogenesis related 2
Database Link:	Entrez Gene 152007 Human Q9H4G4
Background:	GLIPR2 is closely related to plant pathogenesis-related (PR-1) proteins, which are upregulated in response to pathogen attack. This protein is found within lipid-enriched microdomains on the cytosolic side of the endomembrane system. GLIPR2 is tightly anchored to membranes and absent from the cytosol, although it does not possess a membrane-spanning domain. Recombinant human GLIPR2 protein, fused to His-tag at N-terminus, was expressed in E.coli and purified by using conventional chromatography techniques.



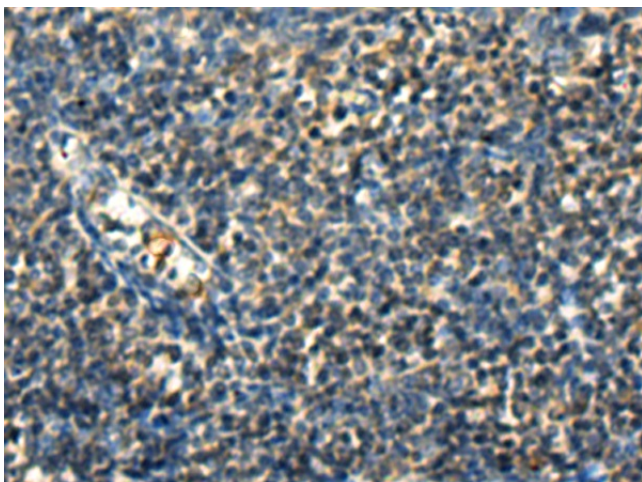
[View online »](#)

Synonyms: C9orf19; GAPR-1; GAPR1

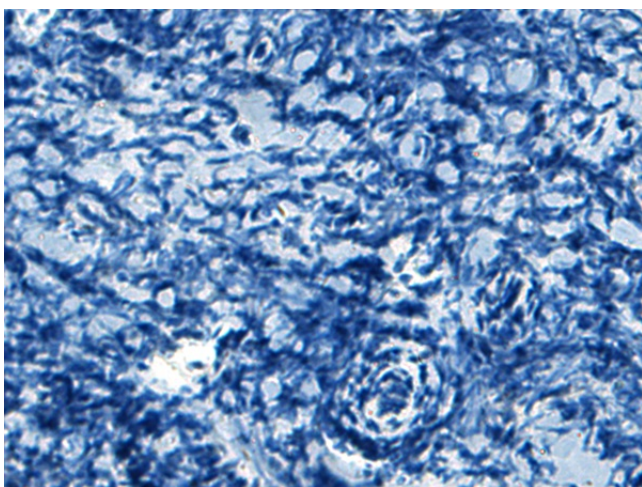
Product images:



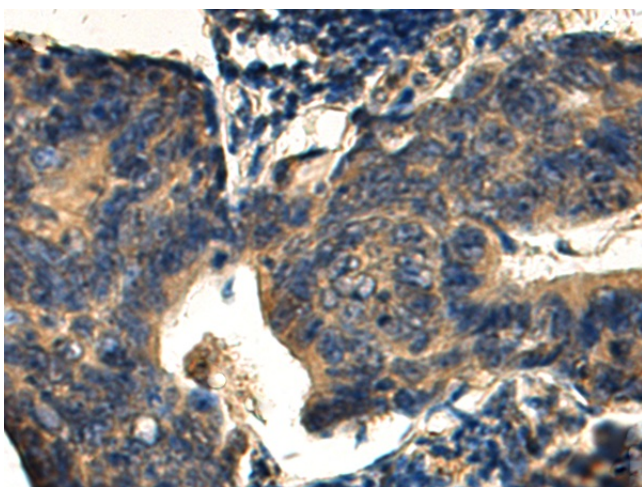
Gel: 12%SDS-PAGE
Lysate: 40 μ g
Lane: C2C12 cell lysate
Primary antibody: TA370953 (GLIPR2 Antibody) at dilution 1/1000
Secondary antibody: Goat anti rabbit IgG at 1/5000 dilution
Exposure time: 5 minutes



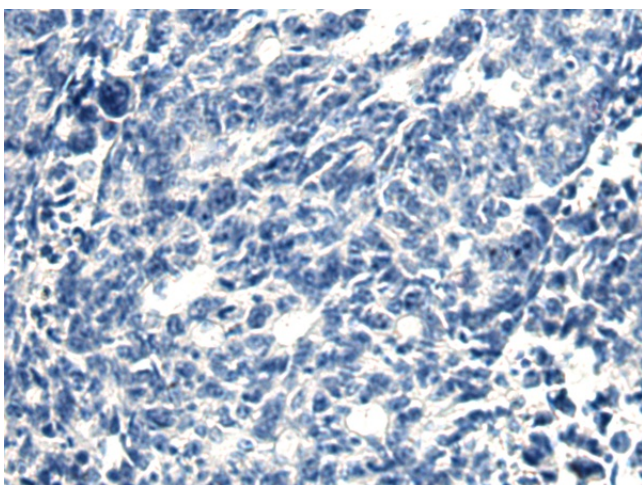
Immunohistochemistry of paraffin-embedded Human tonsil tissue using TA370953 (GLIPR2 Antibody) at dilution 1/130 (Original magnification: \times 200)



Immunohistochemistry of paraffin-embedded Human tonsil tissue using TA370953 (GLIPR2 Antibody) at dilution 1/130, treated with fusion protein. (Original magnification: x200)



Immunohistochemistry of paraffin-embedded Human colorectal cancer tissue using TA370953 (GLIPR2 Antibody) at dilution 1/130 (Original magnification: x200)



Immunohistochemistry of paraffin-embedded Human colorectal cancer tissue using TA370953 (GLIPR2 Antibody) at dilution 1/130, treated with fusion protein. (Original magnification: x200)