

## Product datasheet for **TA370952S**

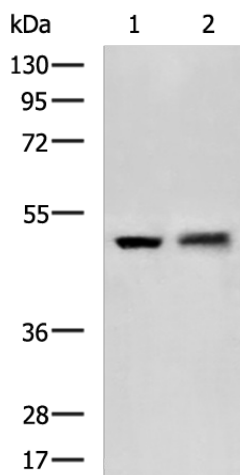
### FARS2 Rabbit Polyclonal Antibody

#### Product data:

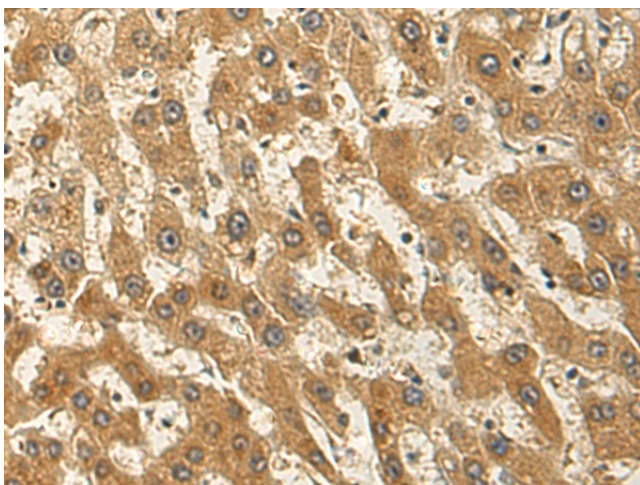
Product Type:	Primary Antibodies
Applications:	IHC, WB
Recommended Dilution:	WB: 500-2000 WB positive control: 293T and Hela cell lysates IHC: 200-300 Positive control: Human liver cancer Predicted cell location: Cytoplasm
Reactivity:	Human, Mouse
Host:	Rabbit
Isotype:	IgG
Clonality:	Polyclonal
Immunogen:	Fusion protein of human FARS2
Formulation:	pH7.4 PBS, 0.05% NaN <sub>3</sub> , 40% Glycerol
Purification:	Antigen affinity purification
Conjugation:	Unconjugated
Storage:	Store at -20°C.
Stability:	1 year
Predicted Protein Size:	52 kDa
Gene Name:	phenylalanyl-tRNA synthetase 2, mitochondrial
Database Link:	<a href="#">Entrez Gene 10667 Human O95363</a>
Background:	This gene encodes a protein that transfers phenylalanine to its cognate tRNA. This protein localizes to the mitochondrion and plays a role in mitochondrial protein translation. Mutations in this gene can cause combined oxidative phosphorylation deficiency 14 (Alpers encephalopathy). Alternative splicing results in multiple transcript variants.
Synonyms:	dj236A3.1; dj520B18.2; FARS1; HSPC320; OTTHUMP00000015986; PheRS



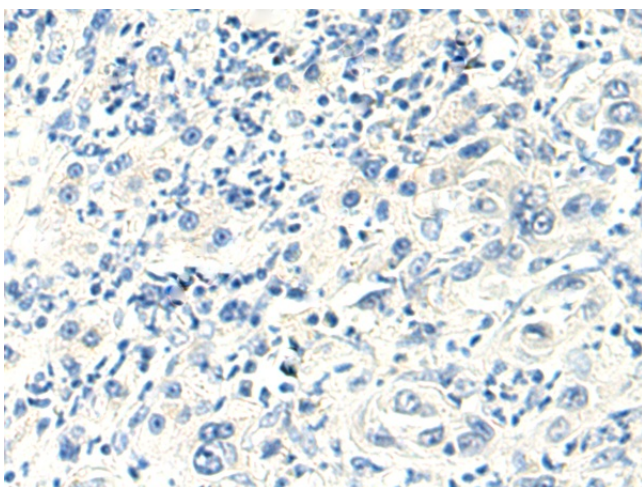
[View online »](#)

**Product images:**

Gel: 8%SDS-PAGE  
Lysate: 40  $\mu$ g  
Lane 1-2: 293T and HeLa cell lysates  
Primary antibody: [TA370952] (FARS2 Antibody) at dilution 1/800  
Secondary antibody: Goat anti rabbit IgG at 1/5000 dilution  
Exposure time: 15 seconds



Immunohistochemistry of paraffin-embedded Human liver cancer tissue using [TA370952] (FARS2 Antibody) at dilution 1/150 (Original magnification:  $\times 200$ )



Immunohistochemistry of paraffin-embedded Human liver cancer tissue using [TA370952] (FARS2 Antibody) at dilution 1/150, treated with fusion protein. (Original magnification: ×200)