

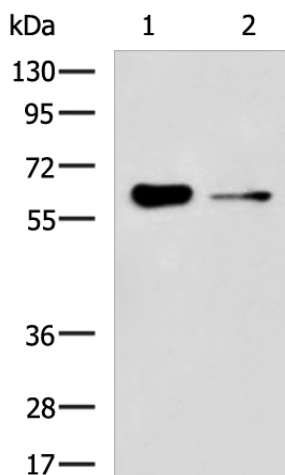
## Product datasheet for **TA370949S**

### FRMD5 Rabbit Polyclonal Antibody

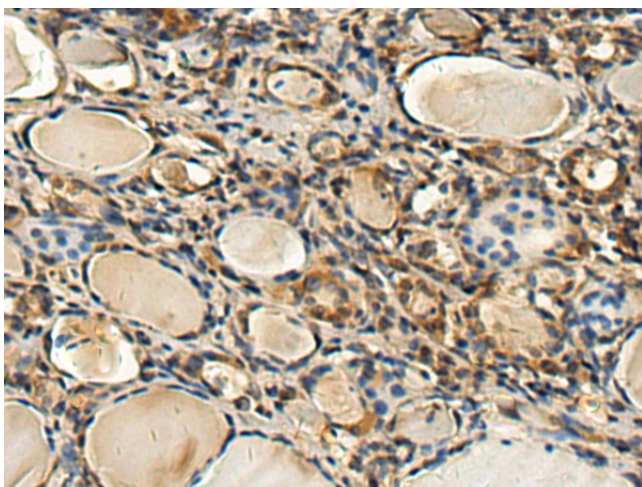
#### Product data:

Product Type:	Primary Antibodies
Applications:	IHC, WB
Recommended Dilution:	WB: 500-2000 WB positive control: HUVEC cell, Mouse kidney tissue lysates IHC: 150-300 Positive control: Human thyroid cancer Predicted cell location: Cell membrane
Reactivity:	Human, Mouse
Host:	Rabbit
Isotype:	IgG
Clonality:	Polyclonal
Immunogen:	Fusion protein of human FRMD5
Formulation:	pH7.4 PBS, 0.05% NaN <sub>3</sub> , 40% Glycerol
Purification:	Antigen affinity purification
Conjugation:	Unconjugated
Storage:	Store at -20°C.
Stability:	1 year
Predicted Protein Size:	65 kDa
Gene Name:	FERM domain containing 5
Database Link:	<a href="#">Entrez Gene 84978 Human Q7Z6J6</a>
Background:	May be involved in regulation of cell migration (PubMed:22846708, PubMed:25448675). May regulate cell-matrix interactions via its interaction with ITGB5 and modifying ITGB5 cytoplasmic tail interactions such as with FERMT2 and TLN1. May regulate ROCK1 kinase activity possibly involved in regulation of actin stress fiber formation (PubMed:25448675).
Synonyms:	FLJ41022; MGC14161

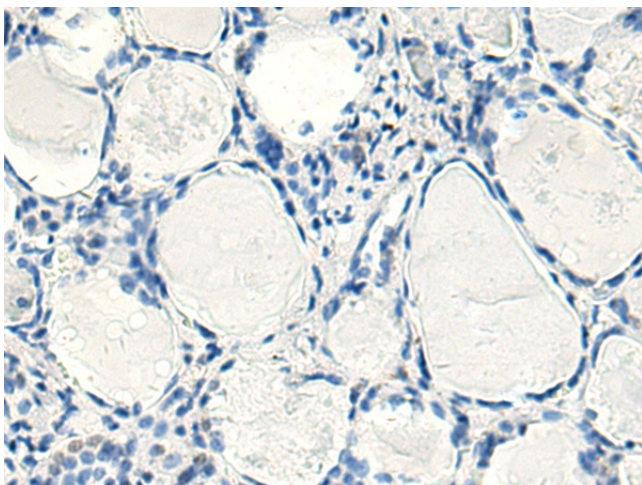

[View online »](#)

**Product images:**


Gel: 8%SDS-PAGE  
 Lysate: 40 µg  
 Lane 1-2: HUVEC cell  
 Mouse kidney tissue lysates  
 Primary antibody: [TA370949] (FRMD5 Antibody)  
 at dilution 1/1000  
 Secondary antibody: Goat anti rabbit IgG at  
 1/5000 dilution  
 Exposure time: 3 minutes



Immunohistochemistry of paraffin-embedded  
 Human thyroid cancer tissue using [TA370949]  
 (FRMD5 Antibody) at dilution 1/160 (Original  
 magnification: ×200)



Immunohistochemistry of paraffin-embedded Human thyroid cancer tissue using [TA370949] (FRMD5 Antibody) at dilution 1/160, treated with fusion protein. (Original magnification: ×200)