

Product datasheet for **TA370948**

DUSP15 Rabbit Polyclonal Antibody

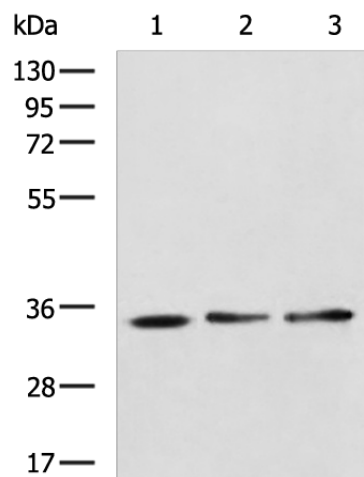
Product data:

Product Type:	Primary Antibodies
Applications:	IHC, WB
Recommended Dilution:	WB: 500-2000 WB positive control: Human cerebrum tissue, HepG2 cell, Mouse testis tissue lysates IHC: 150-300 Positive control: Human colorectal cancer Predicted cell location: Cytoplasm
Reactivity:	Human, Mouse, Rat
Host:	Rabbit
Isotype:	IgG
Clonality:	Polyclonal
Immunogen:	Fusion protein of human DUSP15
Formulation:	pH7.4 PBS, 0.05% NaN ₃ , 40% Glycerol
Concentration:	lot specific
Purification:	Antigen affinity purification
Conjugation:	Unconjugated
Storage:	Store at -20°C.
Stability:	1 year
Predicted Protein Size:	32 kDa
Gene Name:	dual specificity phosphatase 15
Database Link:	Entrez Gene 128853 Human Q9H1R2
Background:	The protein encoded by this gene has both protein-tyrosine phosphatase activity and serine/threonine-specific phosphatase activity, and therefore is known as a dual specificity phosphatase. This protein may function in the differentiation of oligodendrocytes. Alternative splicing results in multiple transcript variants.
Synonyms:	bA243J16.6; C20orf57; FLJ40111; VHY

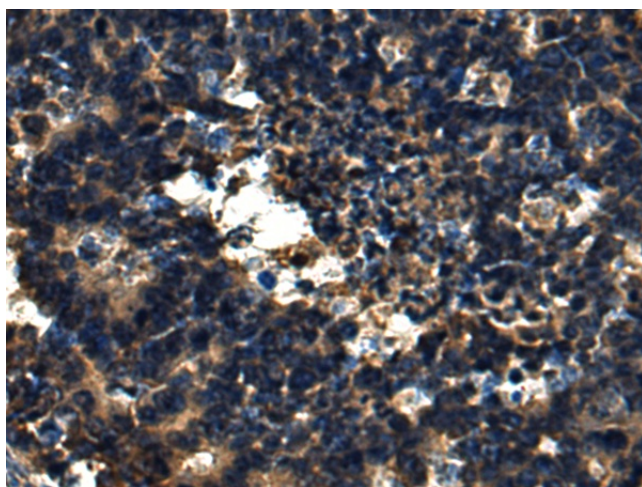


[View online »](#)

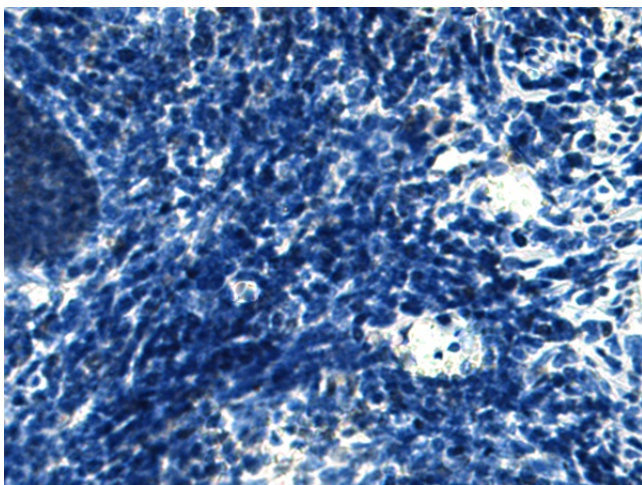
Product images:



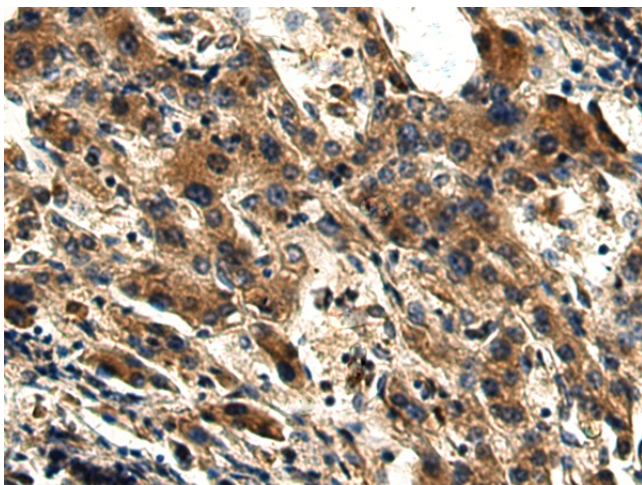
Gel: 8%SDS-PAGE
Lysate: 40 μ g
Lane 1-3: Human cerebrum tissue
HepG2 cell
Mouse testis tissue lysates
Primary antibody: TA370948 (DUSP15 Antibody)
at dilution 1/800
Secondary antibody: Goat anti rabbit IgG at
1/5000 dilution
Exposure time: 5 minutes



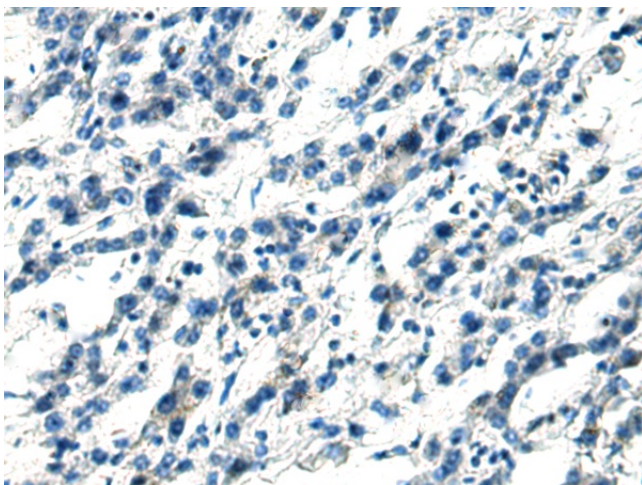
Immunohistochemistry of paraffin-embedded
Human colorectal cancer tissue using TA370948
(DUSP15 Antibody) at dilution 1/150 (Original
magnification: \times 200)



Immunohistochemistry of paraffin-embedded Human colorectal cancer tissue using TA370948 (DUSP15 Antibody) at dilution 1/150, treated with fusion protein. (Original magnification: ×200)



Immunohistochemistry of paraffin-embedded Human liver cancer tissue using TA370948 (DUSP15 Antibody) at dilution 1/150 (Original magnification: ×200)



Immunohistochemistry of paraffin-embedded Human liver cancer tissue using TA370948 (DUSP15 Antibody) at dilution 1/150, treated with fusion protein. (Original magnification: ×200)