

## Product datasheet for **TA370936**

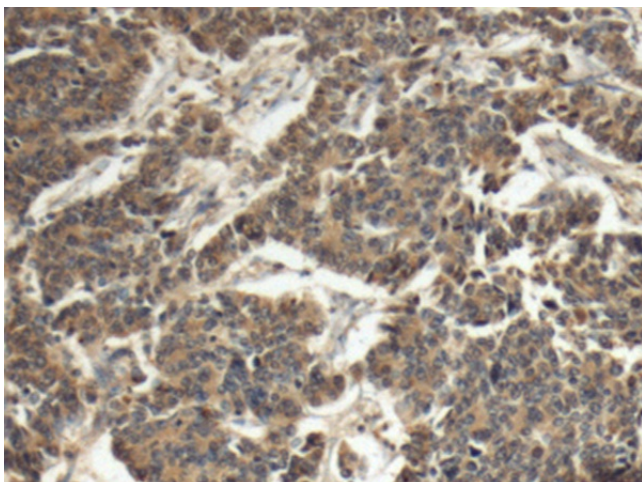
### EIF3S4 (EIF3G) Rabbit Polyclonal Antibody

#### Product data:

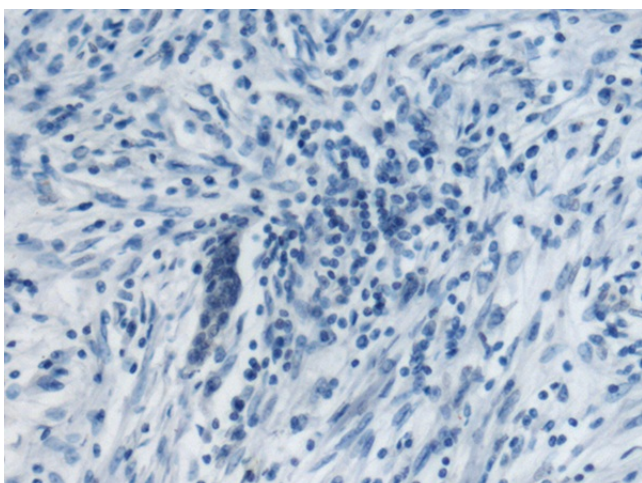
Product Type:	Primary Antibodies
Applications:	IHC
Recommended Dilution:	IHC: 150-300 Positive control: Human colorectal cancer Predicted cell location: Cytoplasm
Reactivity:	Human, Mouse, Rat
Host:	Rabbit
Isotype:	IgG
Clonality:	Polyclonal
Immunogen:	Fusion protein of human EIF3G
Formulation:	pH7.4 PBS, 0.05% NaN <sub>3</sub> , 40% Glycerol
Concentration:	lot specific
Purification:	Antigen affinity purification
Conjugation:	Unconjugated
Storage:	Store at -20°C.
Stability:	1 year
Gene Name:	eukaryotic translation initiation factor 3 subunit G
Database Link:	<a href="#">Entrez Gene 8666 Human O75821</a>
Background:	This gene encodes a core subunit of the eukaryotic translation initiation factor 3 (eIF3) complex, which is required for initiation of protein translation. An N-terminal caspase cleavage product of the encoded protein may stimulate degradation of DNA. A mutation in this gene is associated with narcolepsy. [provided by RefSeq, Jul 2016]
Synonyms:	eIF-3-delta; eIF3-delta; EIF3-P42; eIF3-p44; EIF3S4



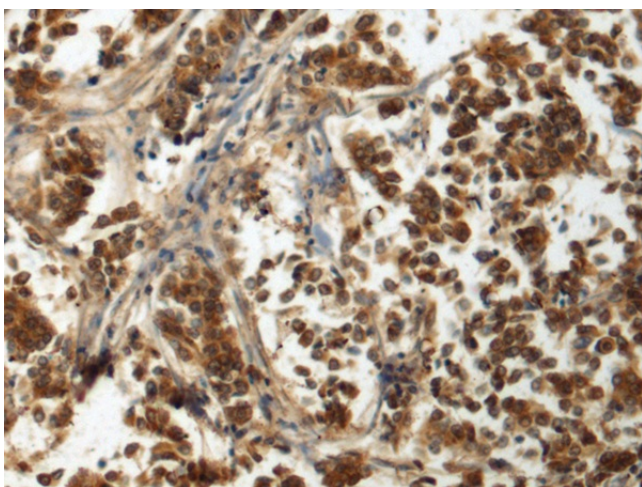
[View online »](#)

**Product images:**

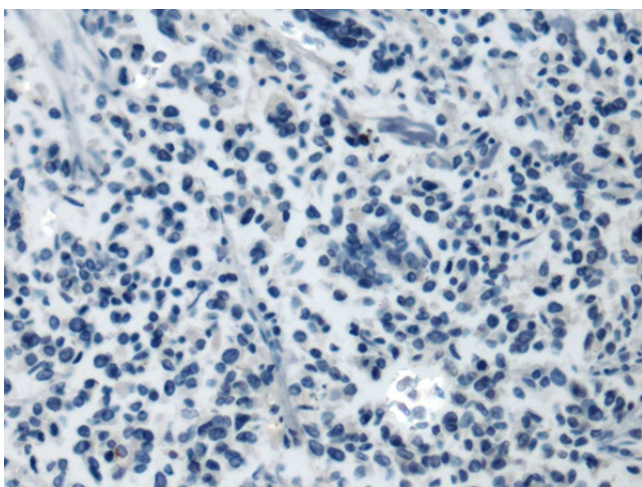
Immunohistochemistry of paraffin-embedded Human colorectal cancer tissue using TA370936 (EIF3G Antibody) at dilution 1/110 (Original magnification:  $\times 200$ )



Immunohistochemistry of paraffin-embedded Human colorectal cancer tissue using TA370936 (EIF3G Antibody) at dilution 1/110, treated with fusion protein. (Original magnification:  $\times 200$ )



Immunohistochemistry of paraffin-embedded Human breast cancer tissue using TA370936 (EIF3G Antibody) at dilution 1/110 (Original magnification:  $\times 200$ )



Immunohistochemistry of paraffin-embedded Human breast cancer tissue using TA370936 (EIF3G Antibody) at dilution 1/110, treated with fusion protein. (Original magnification:  $\times 200$ )