

Product datasheet for **TA370935S**

FKBP25 (FKBP3) Rabbit Polyclonal Antibody

Product data:

Product Type:	Primary Antibodies
Applications:	IHC, WB
Recommended Dilution:	WB: 1000-5000 WB positive control: Human bladder transitional cell carcinoma cancer next level 2-3 tissue, Human bladder transitional cell carcinoma grade 2-3 tissue lysates IHC: 200-300 Positive control: Human liver cancer Predicted cell location: Cytoplasm
Reactivity:	Human, Mouse
Host:	Rabbit
Isotype:	IgG
Clonality:	Polyclonal
Immunogen:	Fusion protein of human FKBP3
Formulation:	pH7.4 PBS, 0.05% NaN ₃ , 40% Glycerol
Purification:	Antigen affinity purification
Conjugation:	Unconjugated
Storage:	Store at -20°C.
Stability:	1 year
Predicted Protein Size:	25 kDa
Gene Name:	FK506 binding protein 3
Database Link:	Entrez Gene 2287 Human Q00688

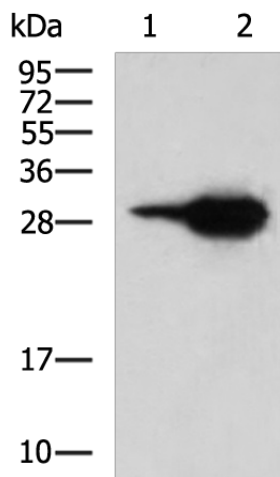
Background: The protein encoded by this gene is a member of the immunophilin protein family, which play a role in immunoregulation and basic cellular processes involving protein folding and trafficking. This encoded protein is a cis-trans prolyl isomerase that binds the immunosuppressants FK506 and rapamycin, as well as histone deacetylases, the transcription factor YY1, casein kinase II, and nucleolin. It has a higher affinity for rapamycin than for FK506 and thus may be an important target molecule for immunosuppression by rapamycin.



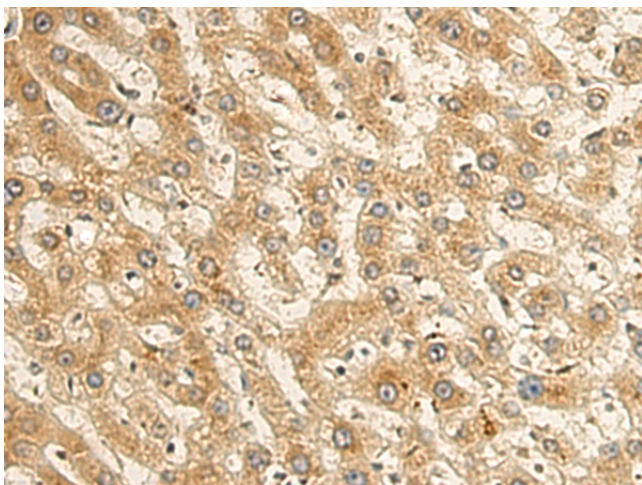
[View online »](#)

Synonyms: FKBP-25; FKBP25; OTTHUMP00000178918; PPlase; rotamase

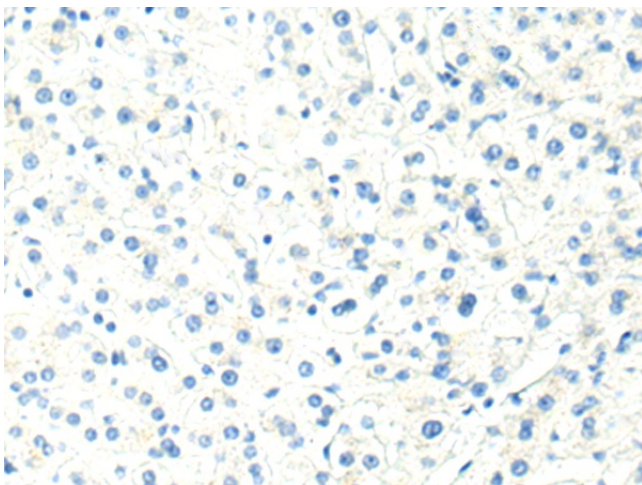
Product images:



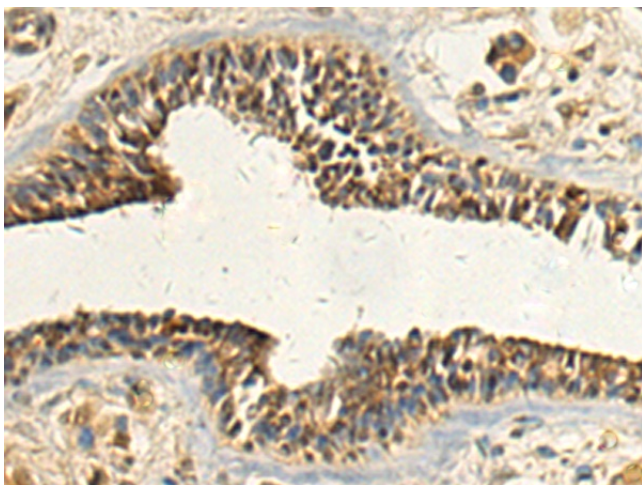
Gel: 12%SDS-PAGE
 Lysate: 40 µg
 Lane 1-2: Human bladder transitional cell carcinoma cancer next level 2-3 tissue Human bladder transitional cell carcinoma grade 2-3 tissue lysates
 Primary antibody: [TA370935] (FKBP3 Antibody) at dilution 1/1000
 Secondary antibody: Goat anti rabbit IgG at 1/5000 dilution
 Exposure time: 10 seconds



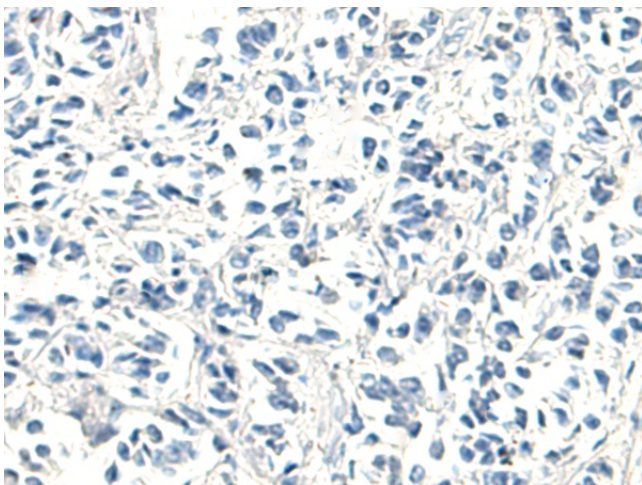
Immunohistochemistry of paraffin-embedded Human liver cancer tissue using [TA370935] (FKBP3 Antibody) at dilution 1/180 (Original magnification: ×200)



Immunohistochemistry of paraffin-embedded Human liver cancer tissue using [TA370935] (FKBP3 Antibody) at dilution 1/180, treated with fusion protein. (Original magnification: $\times 200$)



Immunohistochemistry of paraffin-embedded Human breast cancer tissue using [TA370935] (FKBP3 Antibody) at dilution 1/180 (Original magnification: $\times 200$)



Immunohistochemistry of paraffin-embedded Human breast cancer tissue using [TA370935] (FKBP3 Antibody) at dilution 1/180, treated with fusion protein. (Original magnification: $\times 200$)