

Product datasheet for **TA370925**

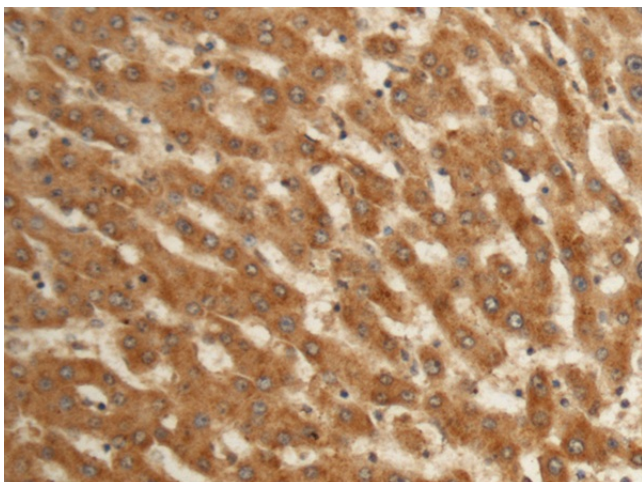
EFHC2 Rabbit Polyclonal Antibody

Product data:

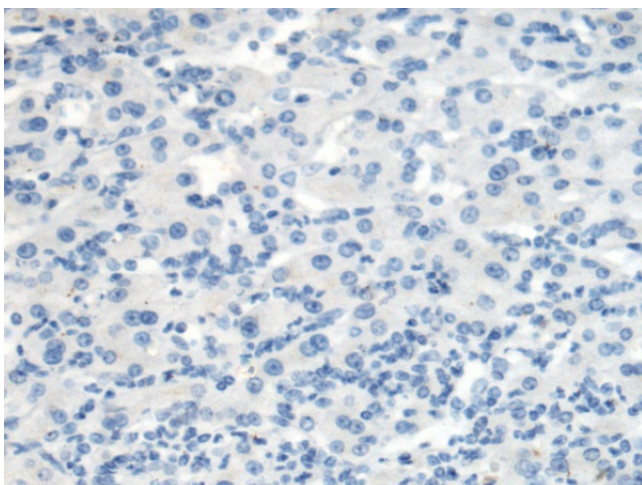
Product Type:	Primary Antibodies
Applications:	IHC
Recommended Dilution:	IHC: 200-300 Positive control: Human liver cancer Predicted cell location: Cytoplasm
Reactivity:	Human
Host:	Rabbit
Isotype:	IgG
Clonality:	Polyclonal
Immunogen:	Fusion protein of human EFHC2
Formulation:	pH7.4 PBS, 0.05% NaN ₃ , 40% Glycerol
Concentration:	lot specific
Purification:	Antigen affinity purification
Conjugation:	Unconjugated
Storage:	Store at -20°C.
Stability:	1 year
Gene Name:	EF-hand domain containing 2
Database Link:	Entrez Gene 80258 Human Q5JST6
Background:	This gene encodes a protein which contains three DM10 domains and three calcium-binding EF-hand motifs. A related protein is encoded by a gene on chromosome 6. It has been suggested that both proteins are involved in the development of epilepsy (PMID: 15258581, 16112844) and that this gene may be associated with fear recognition in individuals with Turner syndrome. [provided by RefSeq, Aug 2011]
Synonyms:	dj1158H2.1; DKFZp686G08235; FLJ22601; FLJ22843



[View online »](#)

Product images:

Immunohistochemistry of paraffin-embedded Human liver cancer tissue using TA370925 (EFHC2 Antibody) at dilution 1/150 (Original magnification: ×200)



Immunohistochemistry of paraffin-embedded Human liver cancer tissue using TA370925 (EFHC2 Antibody) at dilution 1/150, treated with fusion protein. (Original magnification: ×200)