

## Product datasheet for TA370921S

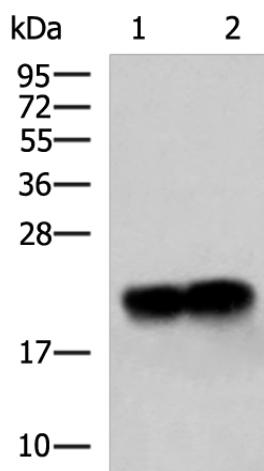
### HPCAL4 Rabbit Polyclonal Antibody

#### Product data:

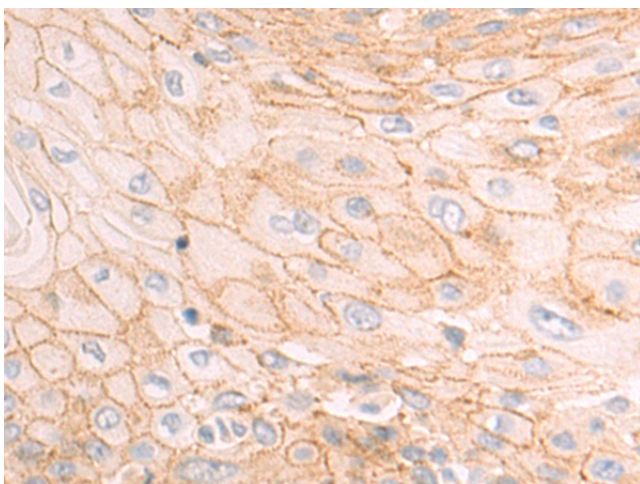
Product Type:	Primary Antibodies
Applications:	IHC, WB
Recommended Dilution:	WB: 1000-5000 WB positive control: Human cerebella tissue, Mouse brain tissue lysates IHC: 50-200 Positive control: Human esophagus cancer Predicted cell location: Cytoplasm
Reactivity:	Human, Mouse, Rat
Host:	Rabbit
Isotype:	IgG
Clonality:	Polyclonal
Immunogen:	Fusion protein of human HPCAL4
Formulation:	pH7.4 PBS, 0.05% NaN <sub>3</sub> , 40% Glycerol
Purification:	Antigen affinity purification
Conjugation:	Unconjugated
Storage:	Store at -20°C.
Stability:	1 year
Predicted Protein Size:	22 kDa
Gene Name:	hippocalcin like 4
Database Link:	<a href="#">Entrez Gene 51440 Human Q9UM19</a>
Background:	The protein encoded by this gene is highly similar to human hippocalcin protein and hippocalcin like-1 protein. It also has similarity to rat neural visinin-like Ca <sup>2+</sup> -binding protein-type 1 and 2 proteins. This encoded protein may be involved in the calcium-dependent regulation of rhodopsin phosphorylation. The transcript of this gene has multiple polyadenylation sites. Alternatively spliced transcript variants encoding different isoforms have been found for this gene.
Synonyms:	DKFZp761G122; HLP4


[View online »](#)

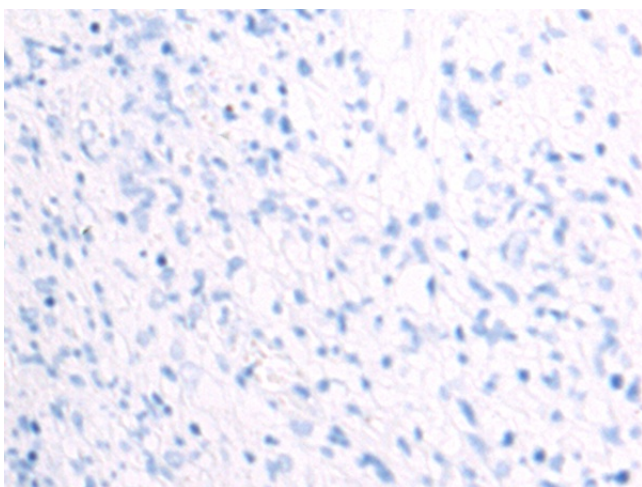
## Product images:



Gel: 12%SDS-PAGE  
 Lysate: 40 µg  
 Lane 1-2: Human cerebella tissue  
 Mouse brain tissue lysates  
 Primary antibody: [TA370921] (HPCAL4 Antibody)  
 at dilution 1/1300  
 Secondary antibody: Goat anti rabbit IgG at  
 1/5000 dilution  
 Exposure time: 10 seconds



Immunohistochemistry of paraffin-embedded  
 Human esophagus cancer tissue using  
 [TA370921] (HPCAL4 Antibody) at dilution 1/75  
 (Original magnification: ×200)



Immunohistochemistry of paraffin-embedded Human esophagus cancer tissue using [TA370921] (HPCAL4 Antibody) at dilution 1/75, treated with fusion protein. (Original magnification:  $\times 200$ )