

Product datasheet for **TA370919**

GNRPX (PLEKHJ1) Rabbit Polyclonal Antibody

Product data:

Product Type:	Primary Antibodies
Applications:	IHC, WB
Recommended Dilution:	WB: 500-2000 WB positive control: Rat skeletal muscle tissue lysate IHC: 100-200 Positive control: Human prostate cancer Predicted cell location: Cytoplasm
Reactivity:	Human, Mouse, Rat
Host:	Rabbit
Isotype:	IgG
Clonality:	Polyclonal
Immunogen:	Fusion protein of human PLEKHJ1
Formulation:	pH7.4 PBS, 0.05% NaN ₃ , 40% Glycerol
Concentration:	lot specific
Purification:	Antigen affinity purification
Conjugation:	Unconjugated
Storage:	Store at -20°C.
Stability:	1 year
Predicted Protein Size:	18 kDa
Gene Name:	pleckstrin homology domain containing J1
Database Link:	Entrez Gene 55111 Human Q9NW61



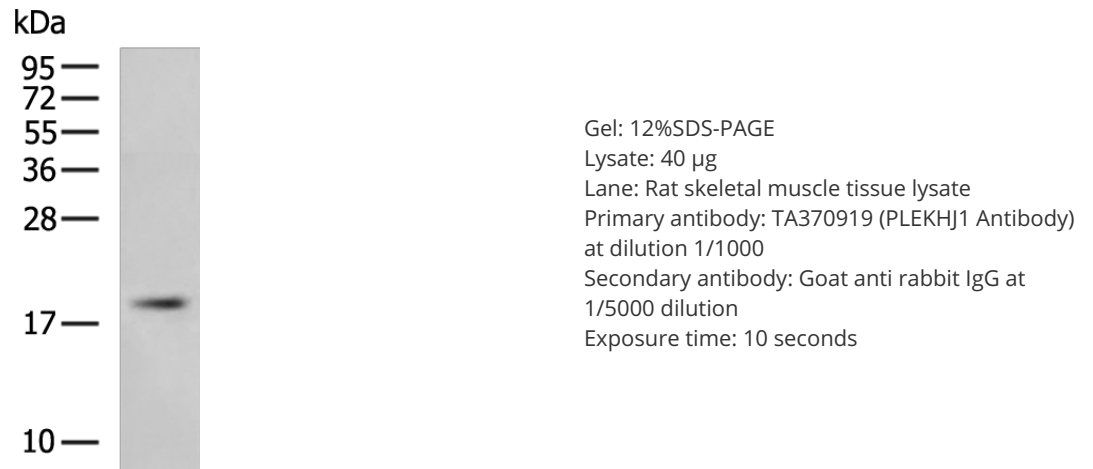
[View online »](#)

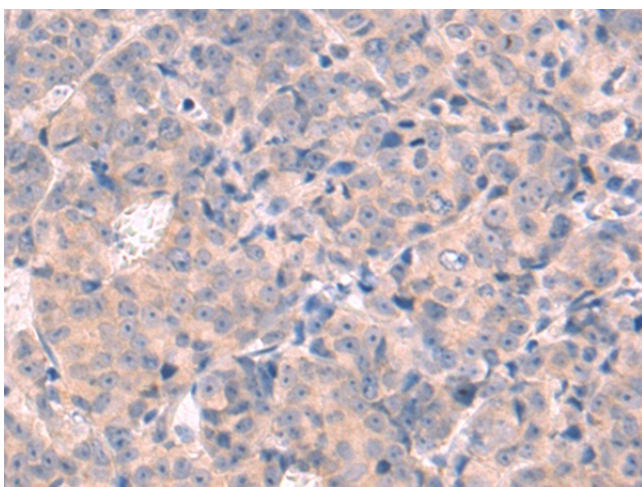
Background:

PLEKHJ1 (pleckstrin homology domain containing, family J member 1), also known as GNRPX (guanine nucleotide-releasing protein x), is a 149 amino acid phosphoprotein that contains one PH (pleckstrin homology) domain and is expressed in testis and liver. The gene that encodes PLEKHJ1 maps to human chromosome 19, which consists of approximately 63 million bases and makes up over 2% of human genomic DNA. Chromosome 19 contains the greatest gene density of the human chromosomes and is the genetic home for a number of immunoglobulin superfamily members, including killer cell and leukocyte Ig-like receptors, ICAMs, the CEACAM and PSG families, and Fc α receptors. Key genes for eye color and hair color also map to chromosome 19. Peutz-Jeghers syndrome, spinocerebellar ataxia type 6, the stroke disorder CADASIL, hypercholesterolemia and insulin-dependent diabetes are also linked to chromosome 19.

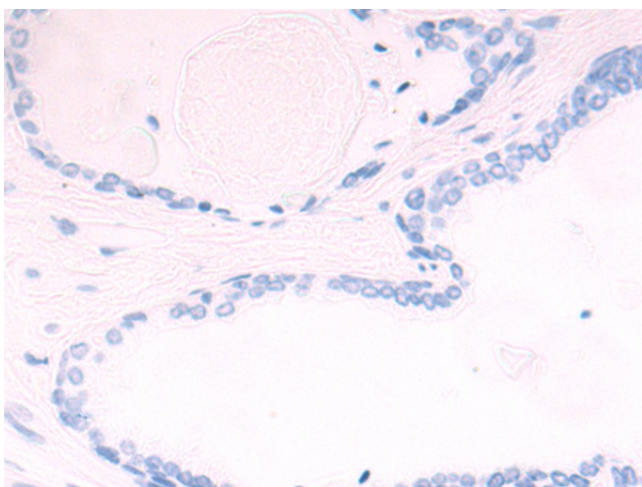
Synonyms:

9530063M10Rik; FLJ10297; GNRPX

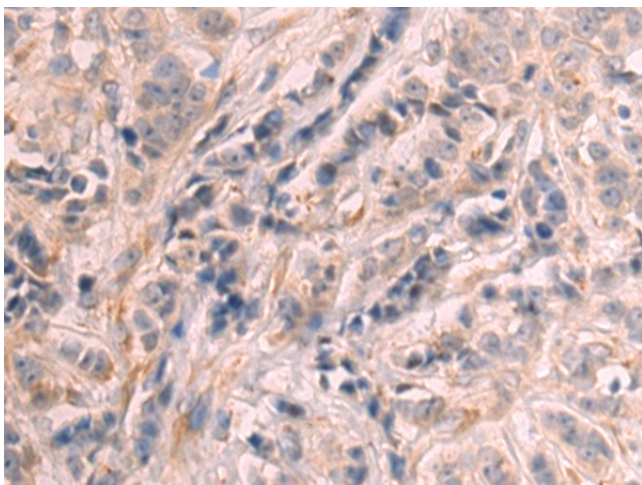
Product images:



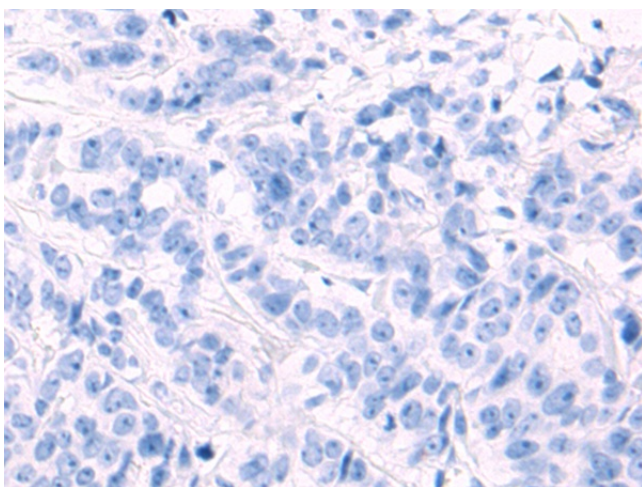
Immunohistochemistry of paraffin-embedded Human prostate cancer tissue using TA370919 (PLEKHJ1 Antibody) at dilution 1/90 (Original magnification: $\times 200$)



Immunohistochemistry of paraffin-embedded Human prostate cancer tissue using TA370919 (PLEKHJ1 Antibody) at dilution 1/90, treated with fusion protein. (Original magnification: $\times 200$)



Immunohistochemistry of paraffin-embedded Human breast cancer tissue using TA370919 (PLEKHJ1 Antibody) at dilution 1/90 (Original magnification: $\times 200$)



Immunohistochemistry of paraffin-embedded Human breast cancer tissue using TA370919 (PLEKHJ1 Antibody) at dilution 1/90, treated with fusion protein. (Original magnification: ×200)