

Product datasheet for **TA370917S**

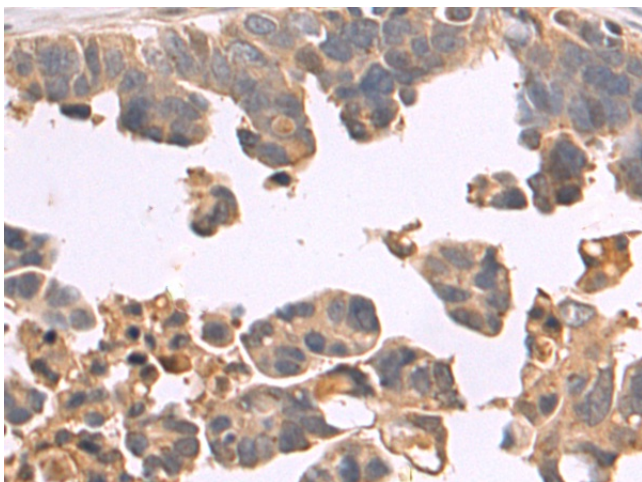
FTSJD1 (CMTR2) Rabbit Polyclonal Antibody

Product data:

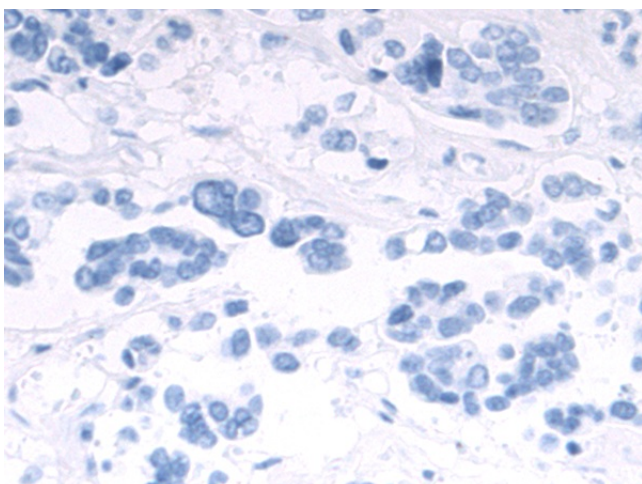
Product Type:	Primary Antibodies
Applications:	IHC
Recommended Dilution:	IHC: 50-200 Positive control: Human colorectal cancer Predicted cell location: Cytoplasm
Reactivity:	Human
Host:	Rabbit
Isotype:	IgG
Clonality:	Polyclonal
Immunogen:	Fusion protein of human CMTR2
Formulation:	pH7.4 PBS, 0.05% NaN ₃ , 40% Glycerol
Purification:	Antigen affinity purification
Conjugation:	Unconjugated
Storage:	Store at -20°C.
Stability:	1 year
Gene Name:	cap methyltransferase 2
Database Link:	Entrez Gene 55783 Human Q8IYT2
Background:	S-adenosyl-L-methionine-dependent methyltransferase that mediates mRNA cap2 2'-O-ribose methylation to the 5'-cap structure of mRNAs. Methylates the ribose of the second nucleotide of a m ⁷ GpppG-capped mRNA and small nuclear RNA (snRNA) (cap0) to produce m ⁷ GpppRmpNm (cap2). Recognizes a guanosine cap on RNA independently of its N7 methylation status. Displays cap2 methylation on both cap0 and cap1. Displays a preference for cap1 RNAs.



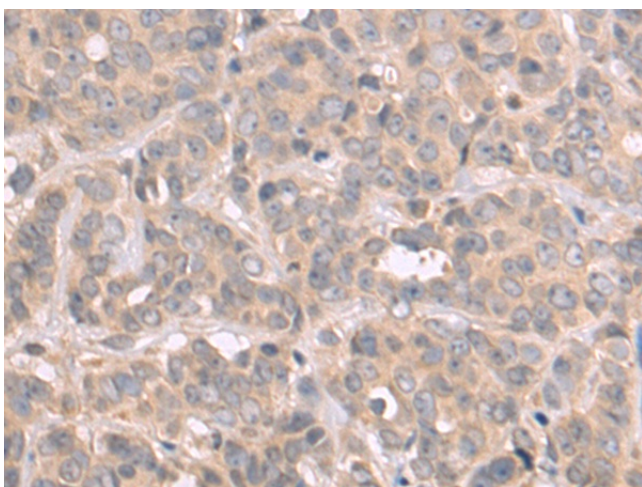
[View online »](#)

Product images:

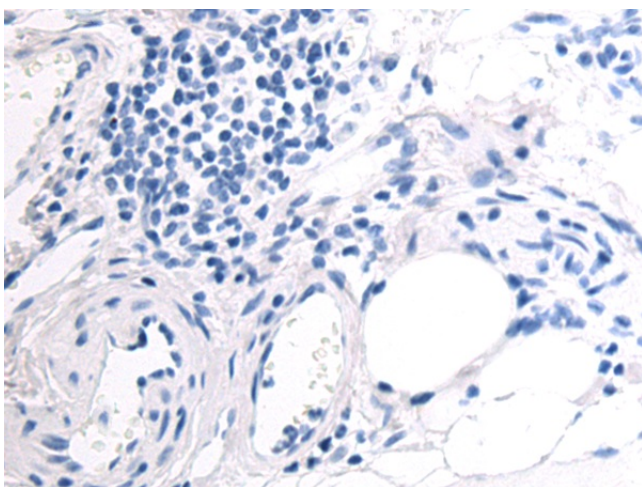
Immunohistochemistry of paraffin-embedded Human colorectal cancer tissue using [TA370917] (CMTR2 Antibody) at dilution 1/80 (Original magnification: $\times 200$)



Immunohistochemistry of paraffin-embedded Human colorectal cancer tissue using [TA370917] (CMTR2 Antibody) at dilution 1/80, treated with fusion protein. (Original magnification: $\times 200$)



Immunohistochemistry of paraffin-embedded Human breast cancer tissue using [TA370917] (CMTR2 Antibody) at dilution 1/80 (Original magnification: $\times 200$)



Immunohistochemistry of paraffin-embedded Human breast cancer tissue using [TA370917] (CMTR2 Antibody) at dilution 1/80, treated with fusion protein. (Original magnification: $\times 200$)