

## Product datasheet for **TA370917**

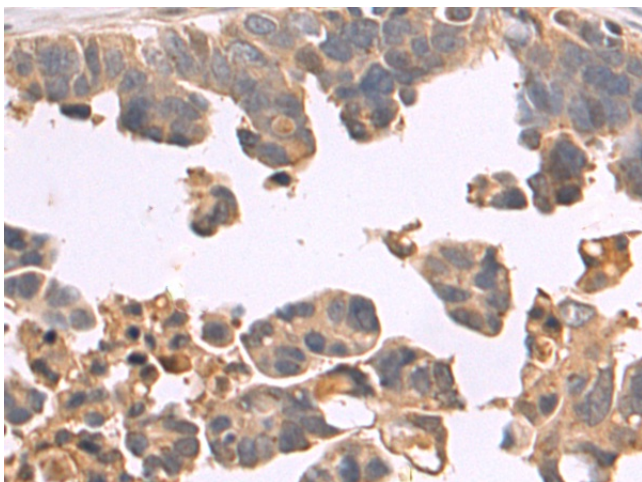
### FTSJD1 (CMTR2) Rabbit Polyclonal Antibody

#### Product data:

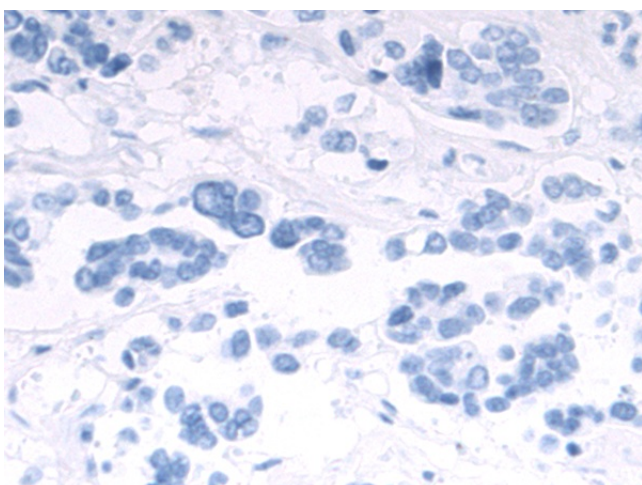
|                       |  |
|-----------------------|--|
| Product Type:         | Primary Antibodies   |
| Applications:         | IHC  |
| Recommended Dilution: | IHC: 50-200<br>Positive control: Human colorectal cancer<br>Predicted cell location: Cytoplasm   |
| Reactivity:           | Human  |
| Host:                 | Rabbit   |
| Isotype:              | IgG  |
| Clonality:            | Polyclonal   |
| Immunogen:            | Fusion protein of human CMTR2  |
| Formulation:          | pH7.4 PBS, 0.05% NaN <sub>3</sub> , 40% Glycerol   |
| Concentration:        | lot specific   |
| Purification:         | Antigen affinity purification  |
| Conjugation:          | Unconjugated   |
| Storage:              | Store at -20°C.  |
| Stability:            | 1 year   |
| Gene Name:            | cap methyltransferase 2  |
| Database Link:        | <a href="#">Entrez Gene 55783 Human Q8IYT2</a>   |
| Background:           | S-adenosyl-L-methionine-dependent methyltransferase that mediates mRNA cap2 2'-O-ribose methylation to the 5'-cap structure of mRNAs. Methylates the ribose of the second nucleotide of a m7GpppG-capped mRNA and small nuclear RNA (snRNA) (cap0) to produce m7GpppRmpNm (cap2). Recognizes a guanosine cap on RNA independently of its N7 methylation status. Display cap2 methylation on both cap0 and cap1. Displays a preference for cap1 RNAs. |



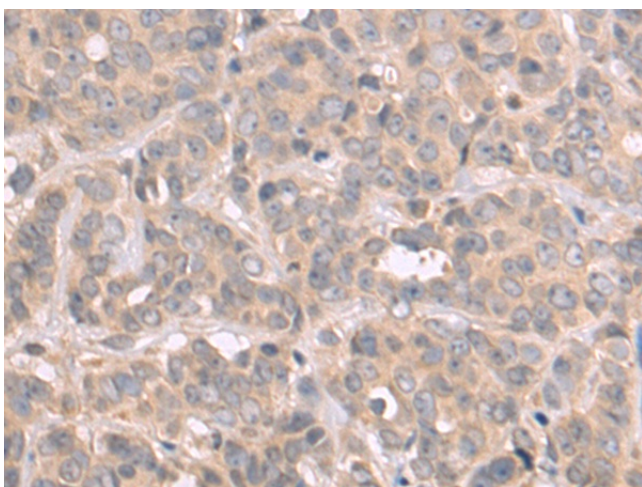
[View online »](#)

**Product images:**

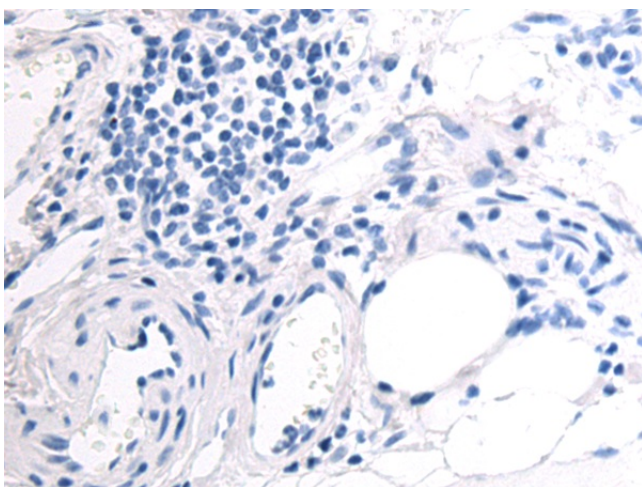
Immunohistochemistry of paraffin-embedded Human colorectal cancer tissue using TA370917 (CMTR2 Antibody) at dilution 1/80 (Original magnification:  $\times 200$ )



Immunohistochemistry of paraffin-embedded Human colorectal cancer tissue using TA370917 (CMTR2 Antibody) at dilution 1/80, treated with fusion protein. (Original magnification:  $\times 200$ )



Immunohistochemistry of paraffin-embedded Human breast cancer tissue using TA370917 (CMTR2 Antibody) at dilution 1/80 (Original magnification: ×200)



Immunohistochemistry of paraffin-embedded Human breast cancer tissue using TA370917 (CMTR2 Antibody) at dilution 1/80, treated with fusion protein. (Original magnification: ×200)