

## Product datasheet for **TA370906S**

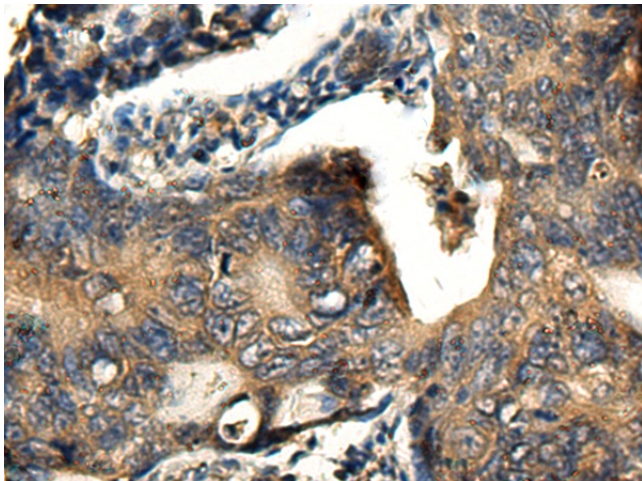
### BCS1L Rabbit Polyclonal Antibody

#### Product data:

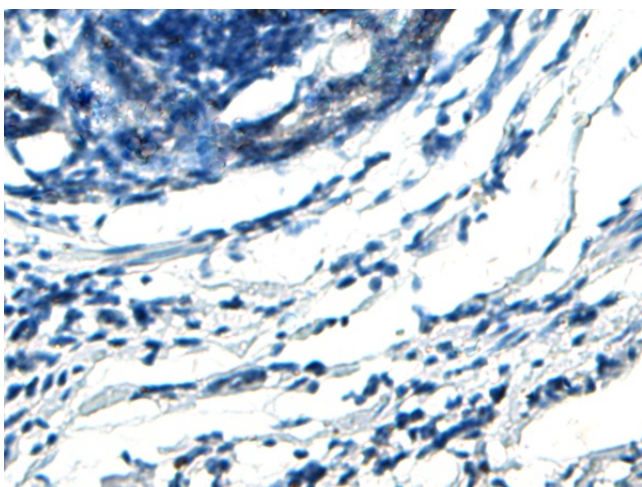
|                       |   |
|-----------------------|---|
| Product Type:         | Primary Antibodies  |
| Applications:         | IHC   |
| Recommended Dilution: | IHC: 150-300<br>Positive control: Human colorectal cancer<br>Predicted cell location: Cytoplasm   |
| Reactivity:           | Human, Mouse  |
| Host:                 | Rabbit  |
| Isotype:              | IgG   |
| Clonality:            | Polyclonal  |
| Immunogen:            | Fusion protein of human BCS1L   |
| Formulation:          | pH7.4 PBS, 0.05% NaN <sub>3</sub> , 40% Glycerol  |
| Purification:         | Antigen affinity purification   |
| Conjugation:          | Unconjugated  |
| Storage:              | Store at -20°C.   |
| Stability:            | 1 year  |
| Gene Name:            | BCS1 homolog, ubiquinol-cytochrome c reductase complex chaperone  |
| Database Link:        | <a href="#">Entrez Gene 617 Human Q9Y276</a>  |
| Background:           | This gene encodes a homolog of the <i>S. cerevisiae</i> <i>bcs1</i> protein which is involved in the assembly of complex III of the mitochondrial respiratory chain. The encoded protein does not contain a mitochondrial targeting sequence but experimental studies confirm that it is imported into mitochondria. Mutations in this gene are associated with mitochondrial complex III deficiency and the GRACILE syndrome. Several alternatively spliced transcripts encoding two different isoforms have been described. |
| Synonyms:             | BCS; BCS1; BCS1-like; BJS; FLNMS; GRACILE; h-BCS; H-BCS1; OTTHUMP00000164147; OTTHUMP00000206494; OTTHUMP00000206495; OTTHUMP00000206496; PTD   |



[View online »](#)

**Product images:**

Immunohistochemistry of paraffin-embedded Human colorectal cancer tissue using [TA370906] (BCS1L Antibody) at dilution 1/200 (Original magnification: ×200)



Immunohistochemistry of paraffin-embedded Human colorectal cancer tissue using [TA370906] (BCS1L Antibody) at dilution 1/200, treated with fusion protein. (Original magnification: ×200)