

## Product datasheet for **TA370902**

### **YANK2 (STK32B) Rabbit Polyclonal Antibody**

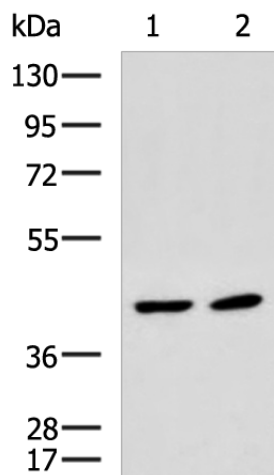
#### **Product data:**

<b>Product Type:</b>	Primary Antibodies
<b>Applications:</b>	IHC, WB
<b>Recommended Dilution:</b>	WB: 1000-5000 WB positive control: Mouse liver tissue and Mouse brain tissue lysates IHC: 100-300 Positive control: Human breast cancer Predicted cell location: Cytoplasm and Nucleus
<b>Reactivity:</b>	Human, Mouse
<b>Host:</b>	Rabbit
<b>Isotype:</b>	IgG
<b>Clonality:</b>	Polyclonal
<b>Immunogen:</b>	Fusion protein of human STK32B
<b>Formulation:</b>	pH7.4 PBS, 0.05% NaN <sub>3</sub> , 40% Glycerol
<b>Concentration:</b>	lot specific
<b>Purification:</b>	Antigen affinity purification
<b>Conjugation:</b>	Unconjugated
<b>Storage:</b>	Store at -20°C.
<b>Stability:</b>	1 year
<b>Predicted Protein Size:</b>	48 kDa
<b>Gene Name:</b>	serine/threonine kinase 32B
<b>Database Link:</b>	<a href="#">Entrez Gene 55351 Human Q9NY57</a>
<b>Background:</b>	This gene encodes a serine-threonine protein kinase. Serine-threonine kinases transfer phosphate molecules to the oxygen atoms of serine and threonine. A genomic deletion affecting this gene has been associated with Ellis-van Creveld syndrome, an autosomal recessive skeletal dysplasia. Alternative splicing results in multiple transcript variants.
<b>Synonyms:</b>	HSA250839; STK32; STKG6; YANK2



[View online »](#)

## Product images:



Gel: 8%SDS-PAGE

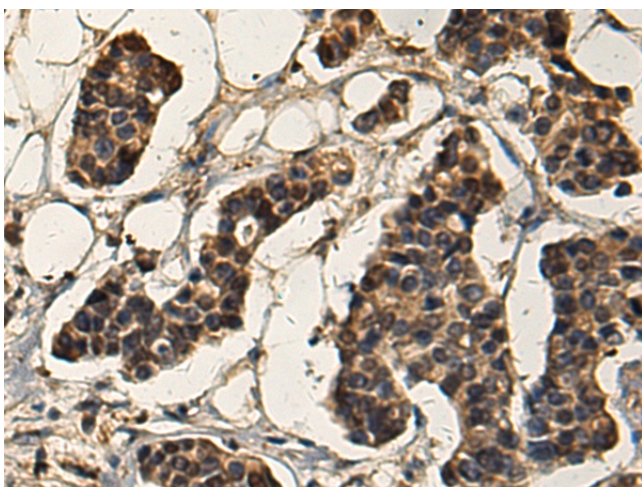
Lysate: 40  $\mu$ g

Lane 1-2: Mouse liver tissue and Mouse brain tissue lysates

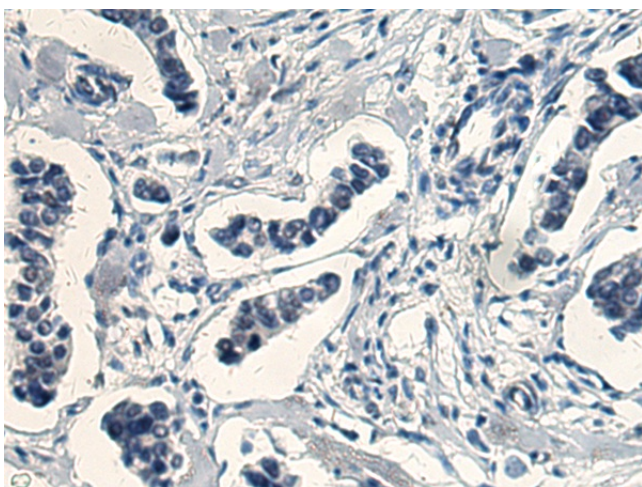
Primary antibody: TA370902 (STK32B Antibody) at dilution 1/1000

Secondary antibody: Goat anti rabbit IgG at 1/5000 dilution

Exposure time: 3 minutes



Immunohistochemistry of paraffin-embedded Human breast cancer tissue using TA370902 (STK32B Antibody) at dilution 1/160 (Original magnification:  $\times$ 200)



Immunohistochemistry of paraffin-embedded Human breast cancer tissue using TA370902 (STK32B Antibody) at dilution 1/160, treated with fusion protein. (Original magnification: ×200)