

Product datasheet for **TA370901S**

DEPTOR Rabbit Polyclonal Antibody

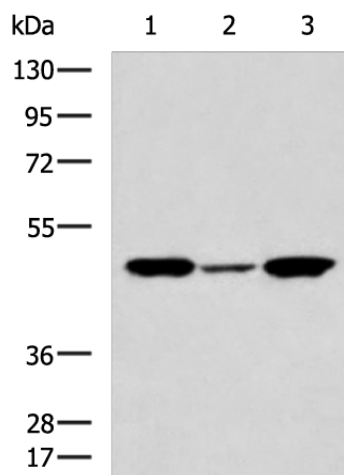
Product data:

Product Type:	Primary Antibodies
Applications:	IHC, WB
Recommended Dilution:	WB: 1000-5000 WB positive control: LOVO, 231 and 293T cell lysates IHC: 150-300 Positive control: Human breast cancer Predicted cell location: Cytoplasm
Reactivity:	Human, Mouse
Host:	Rabbit
Isotype:	IgG
Clonality:	Polyclonal
Immunogen:	Fusion protein of human DEPTOR
Formulation:	pH7.4 PBS, 0.05% NaN ₃ , 40% Glycerol
Purification:	Antigen affinity purification
Conjugation:	Unconjugated
Storage:	Store at -20°C.
Stability:	1 year
Predicted Protein Size:	46 kDa
Gene Name:	DEP domain containing MTOR-interacting protein
Database Link:	Entrez Gene 64798 Human Q8TB45
Background:	Negative regulator of the mTORC1 and mTORC2 signaling pathways. Inhibits the kinase activity of both complexes.
Synonyms:	DEP.6; DEPDC6

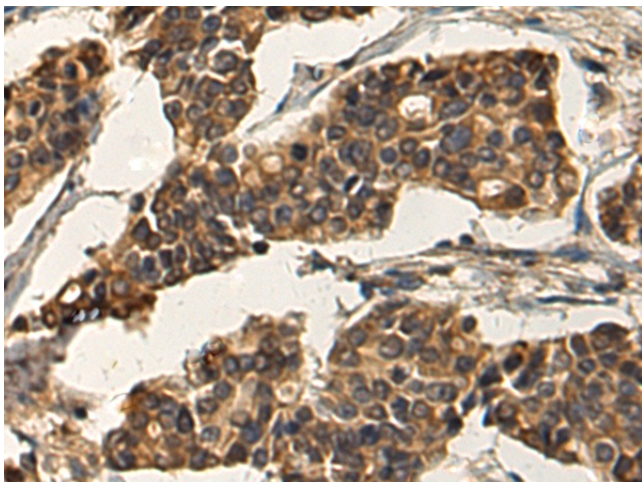


[View online »](#)

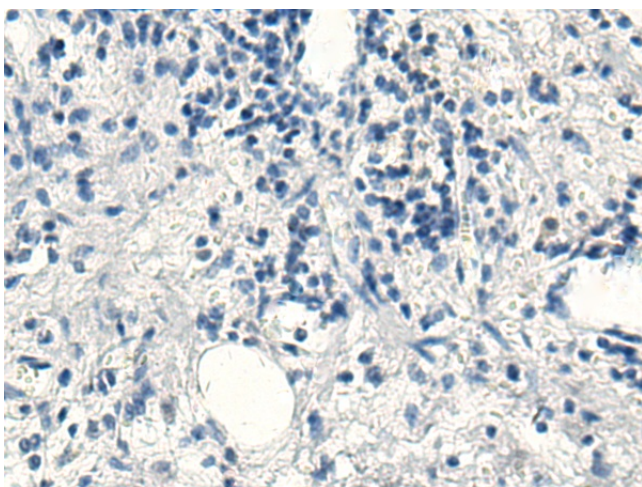
Product images:



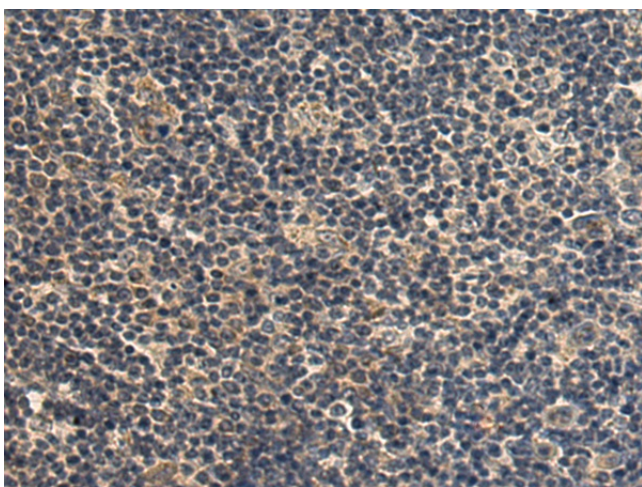
Gel: 8%SDS-PAGE
Lysate: 40 μ g
Lane 1-3: LOVO
231 and 293T cell lysates
Primary antibody: [TA370901] (DEPTOR Antibody)
at dilution 1/1000
Secondary antibody: Goat anti rabbit IgG at
1/5000 dilution
Exposure time: 1 minute



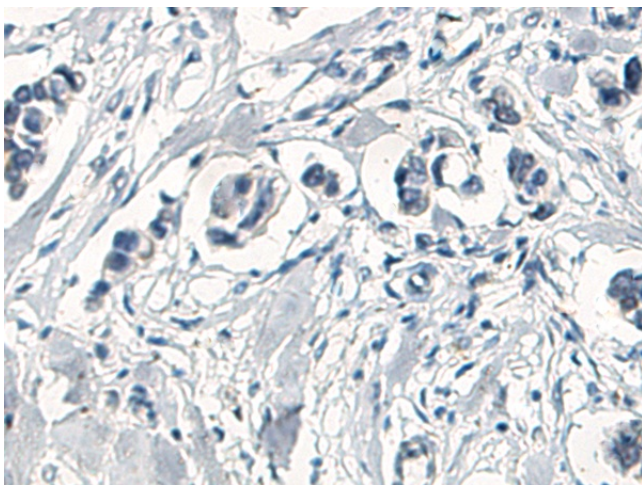
Immunohistochemistry of paraffin-embedded
Human breast cancer tissue using [TA370901]
(DEPTOR Antibody) at dilution 1/120 (Original
magnification: $\times 200$)



Immunohistochemistry of paraffin-embedded Human breast cancer tissue using [TA370901] (DEPTOR Antibody) at dilution 1/120, treated with fusion protein. (Original magnification: $\times 200$)



Immunohistochemistry of paraffin-embedded Human esophagus cancer tissue using [TA370901] (DEPTOR Antibody) at dilution 1/120 (Original magnification: $\times 200$)



Immunohistochemistry of paraffin-embedded Human esophagus cancer tissue using [TA370901] (DEPTOR Antibody) at dilution 1/120, treated with fusion protein. (Original magnification: $\times 200$)