

## Product datasheet for **TA370897S**

### SNIP1 Rabbit Polyclonal Antibody

#### Product data:

Product Type:	Primary Antibodies
Applications:	IHC, WB
Recommended Dilution:	WB: 1000-5000 WB positive control: TM4 cell lysate IHC: 50-200 Positive control: Human breast cancer Predicted cell location: Nucleus
Reactivity:	Human, Mouse, Rat
Host:	Rabbit
Isotype:	IgG
Clonality:	Polyclonal
Immunogen:	Fusion protein of human SNIP1
Formulation:	pH7.4 PBS, 0.05% NaN <sub>3</sub> , 40% Glycerol
Purification:	Antigen affinity purification
Conjugation:	Unconjugated
Storage:	Store at -20°C.
Stability:	1 year
Predicted Protein Size:	46 kDa
Gene Name:	Smad nuclear interacting protein 1
Database Link:	<a href="#">Entrez Gene 79753 Human Q8TAD8</a>

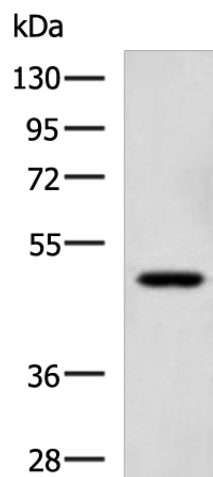
**Background:** This gene encodes a protein that contains a coiled-coil motif and C-terminal forkhead-associated (FHA) domain. The encoded protein functions as a transcriptional coactivator that increases c-Myc activity and inhibits transforming growth factor beta (TGF-beta) and nuclear factor kappa-B (NF-kB) signaling. The encoded protein also regulates the stability of cyclin D1 mRNA, and may play a role in cell proliferation and cancer progression. Mutations in this gene are a cause of psychomotor retardation, epilepsy, and craniofacial dysmorphism (PMRED).



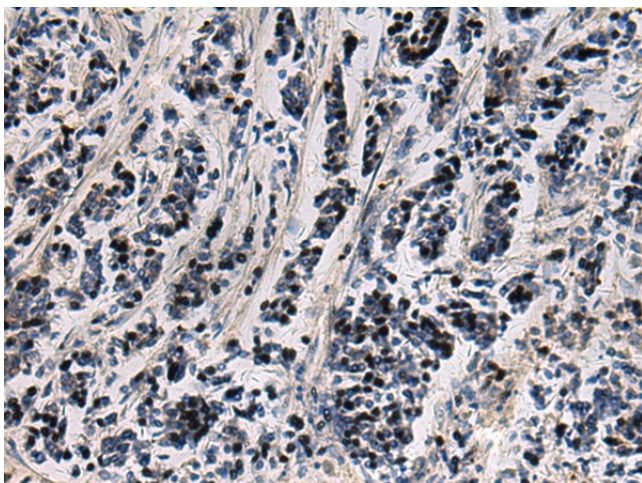
[View online »](#)

**Synonyms:** dj423B22.2; FLJ12553; RP3-423B22.3

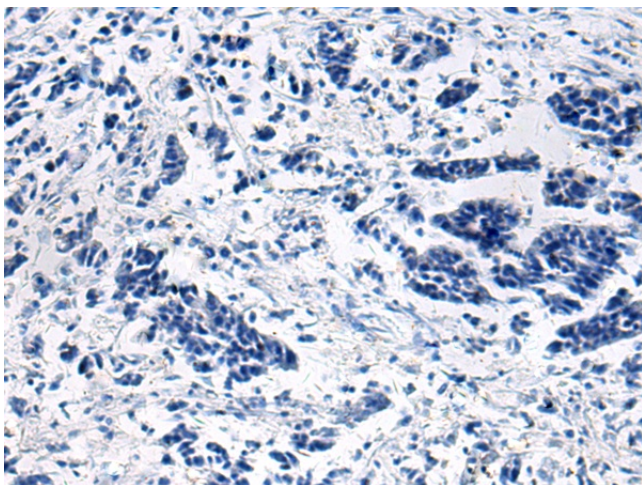
**Product images:**



Gel: 8%SDS-PAGE  
Lysate: 40 µg  
Lane: TM4 cell lysate  
Primary antibody: [TA370897] (SNIP1 Antibody) at dilution 1/1150  
Secondary antibody: Goat anti rabbit IgG at 1/5000 dilution  
Exposure time: 30 seconds



Immunohistochemistry of paraffin-embedded Human breast cancer tissue using [TA370897] (SNIP1 Antibody) at dilution 1/80 (Original magnification: ×200)



Immunohistochemistry of paraffin-embedded Human breast cancer tissue using [TA370897] (SNIP1 Antibody) at dilution 1/80, treated with fusion protein. (Original magnification: ×200)