

Product datasheet for **TA370890S**

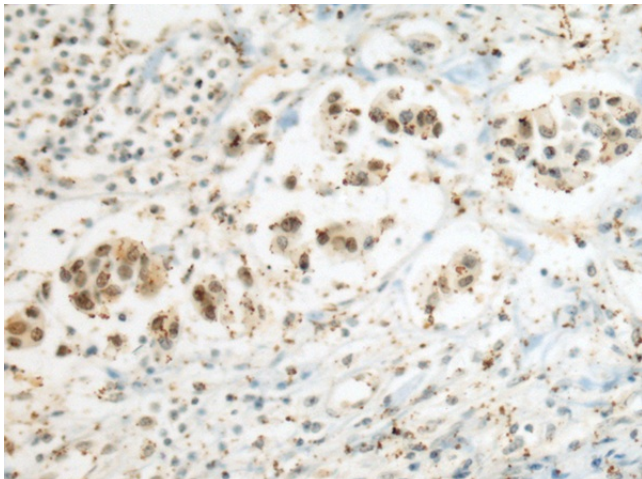
Selenophosphate synthetase 1 (SEPHS1) Rabbit Polyclonal Antibody

Product data:

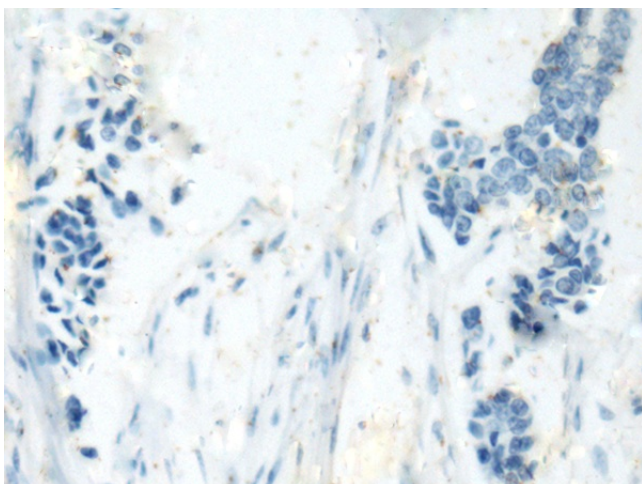
| | |
|-----------------------|---------------------------------------------------------------------------------------------------------------------------------------------------------------------------------------------------------------------------------------------------|
| Product Type: | Primary Antibodies |
| Applications: | IHC |
| Recommended Dilution: | IHC: 50-200 Positive control: Human breast cancer Predicted cell location: Nucleus |
| Reactivity: | Human, Mouse |
| Host: | Rabbit |
| Isotype: | IgG |
| Clonality: | Polyclonal |
| Immunogen: | Fusion protein of human SEPHS1 |
| Formulation: | pH7.4 PBS, 0.05% NaN ₃ , 40% Glycerol |
| Purification: | Antigen affinity purification |
| Conjugation: | Unconjugated |
| Storage: | Store at -20°C. |
| Stability: | 1 year |
| Gene Name: | selenophosphate synthetase 1 |
| Database Link: | Entrez Gene 22929 Human P49903 |
| Background: | This gene encodes an enzyme that synthesizes selenophosphate from selenide and ATP. Selenophosphate is the selenium donor used to synthesize selenocysteine, which is co-translationally incorporated into selenoproteins at in-frame UGA codons. |
| Synonyms: | MGC4980; SELD; SPS; SPS1 |



[View online »](#)

Product images:

Immunohistochemistry of paraffin-embedded Human breast cancer tissue using [TA370890] (SEPHS1 Antibody) at dilution 1/80 (Original magnification: $\times 200$)



Immunohistochemistry of paraffin-embedded Human breast cancer tissue using [TA370890] (SEPHS1 Antibody) at dilution 1/80, treated with fusion protein. (Original magnification: $\times 200$)