

Product datasheet for **TA370887**

SLC30A3 Rabbit Polyclonal Antibody

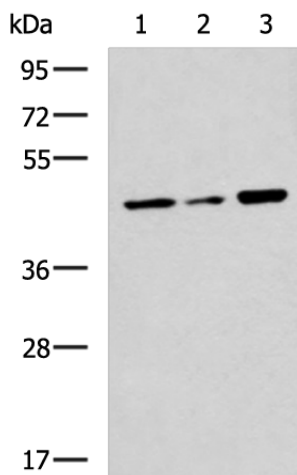
Product data:

Product Type:	Primary Antibodies
Applications:	IHC, WB
Recommended Dilution:	WB: 500-2000 WB positive control: K562, Jurkat and 293T cell lysates IHC: 50-100 Positive control: Human brain Predicted cell location: Cytoplasm
Reactivity:	Human, Mouse, Rat
Host:	Rabbit
Isotype:	IgG
Clonality:	Polyclonal
Immunogen:	Fusion protein of human SLC30A3
Formulation:	pH7.4 PBS, 0.05% NaN ₃ , 40% Glycerol
Concentration:	lot specific
Purification:	Antigen affinity purification
Conjugation:	Unconjugated
Storage:	Store at -20°C.
Stability:	1 year
Predicted Protein Size:	42 kDa
Gene Name:	solute carrier family 30 member 3
Database Link:	Entrez Gene 7781 Human Q99726
Background:	Involved in accumulation of zinc in synaptic vesicles.
Synonyms:	ZnT-3; ZNT3

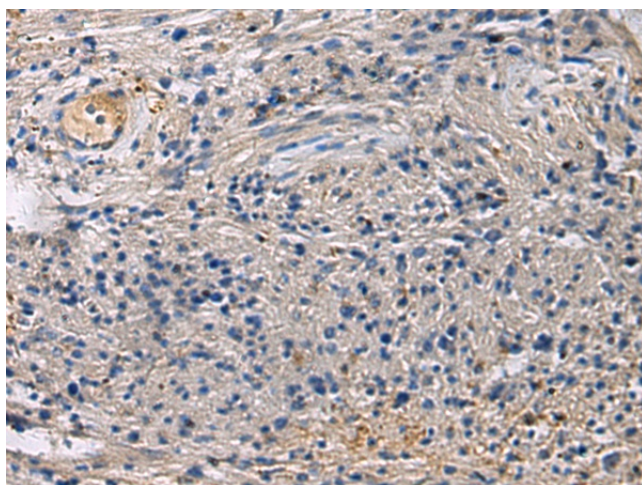


[View online »](#)

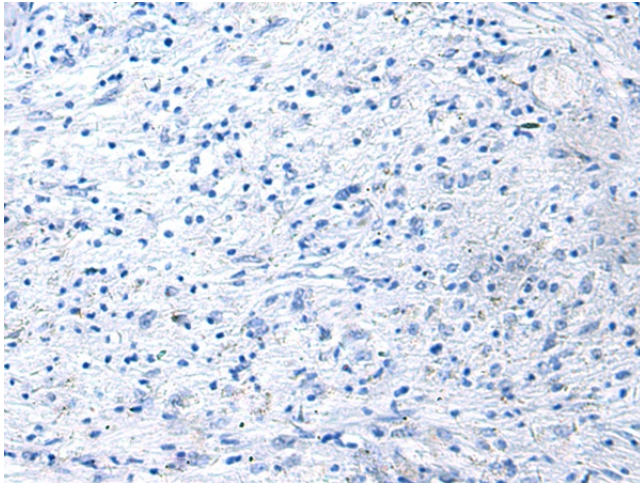
Product images:



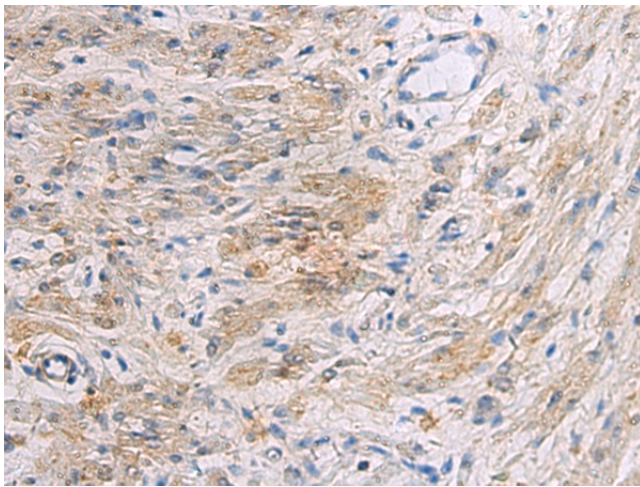
Gel: 8%SDS-PAGE
Lysate: 40 μ g
Lane 1-3: K562
Jurkat and 293T cell lysates
Primary antibody: TA370887 (SLC30A3 Antibody)
at dilution 1/550
Secondary antibody: Goat anti rabbit IgG at
1/5000 dilution
Exposure time: 10 seconds



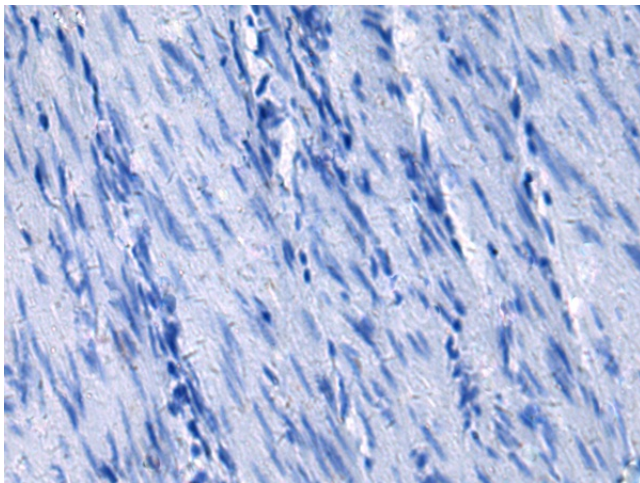
Immunohistochemistry of paraffin-embedded
Human brain tissue using TA370887 (SLC30A3
Antibody) at dilution 1/55 (Original magnification:
 $\times 200$)



Immunohistochemistry of paraffin-embedded Human brain tissue using TA370887 (SLC30A3 Antibody) at dilution 1/55, treated with fusion protein. (Original magnification: $\times 200$)



Immunohistochemistry of paraffin-embedded Human gastric cancer tissue using TA370887 (SLC30A3 Antibody) at dilution 1/55 (Original magnification: $\times 200$)



Immunohistochemistry of paraffin-embedded Human gastric cancer tissue using TA370887 (SLC30A3 Antibody) at dilution 1/55, treated with fusion protein. (Original magnification: $\times 200$)