

## Product datasheet for **TA370886S**

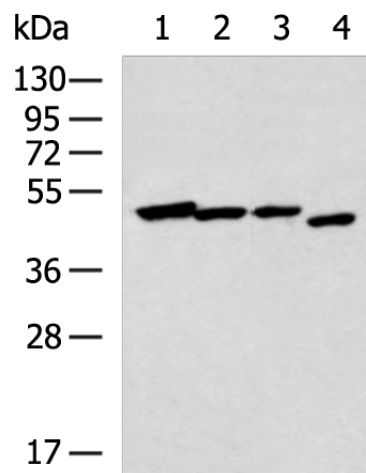
### NR2E1 Rabbit Polyclonal Antibody

#### Product data:

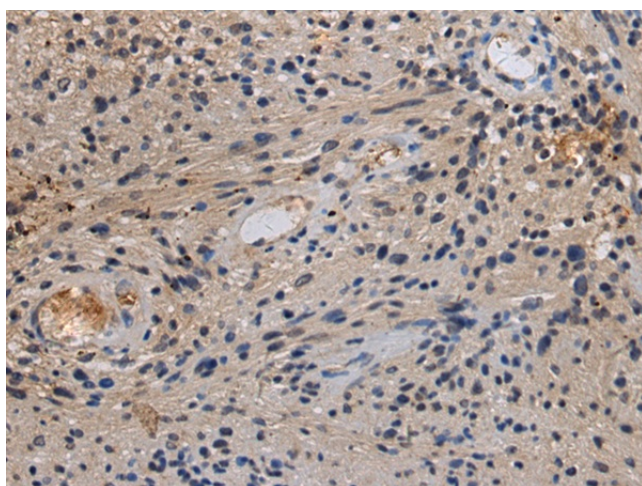
Product Type:	Primary Antibodies
Applications:	IHC, WB
Recommended Dilution:	WB: 1000-5000 WB positive control: Human cerebrum tissue, A172 cell, Mouse brain tissue, NIH/3T3 cell lysates IHC: 100-300 Positive control: Human brain Predicted cell location: Cytoplasm
Reactivity:	Human, Mouse
Host:	Rabbit
Isotype:	IgG
Clonality:	Polyclonal
Immunogen:	Fusion protein of human NR2E1
Formulation:	pH7.4 PBS, 0.05% NaN <sub>3</sub> , 40% Glycerol
Purification:	Antigen affinity purification
Conjugation:	Unconjugated
Storage:	Store at -20°C.
Stability:	1 year
Predicted Protein Size:	43 kDa
Gene Name:	nuclear receptor subfamily 2 group E member 1
Database Link:	<a href="#">Entrez Gene 7101 Human Q9Y466</a>
Background:	The protein encoded by this gene is an orphan receptor involved in retinal development. The encoded protein also regulates adult neural stem cell proliferation and may be involved in control of aggressive behavior. Two transcript variants encoding different isoforms have been found for this gene. [provided by RefSeq, Aug 2015]
Synonyms:	hTII; TII; TLX; XTLL



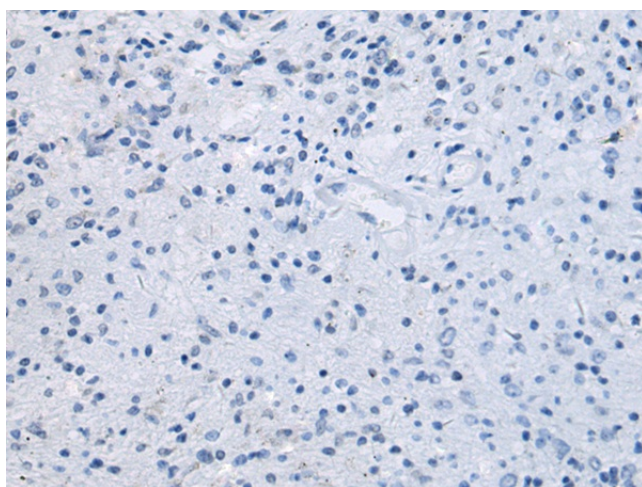
[View online »](#)

**Product images:**


Gel: 8%SDS-PAGE  
 Lysate: 40 µg  
 Lane 1-4: Human cerebrum tissue  
 A172 cell  
 Mouse brain tissue  
 NIH/3T3 cell lysates  
 Primary antibody: [TA370886] (NR2E1 Antibody)  
 at dilution 1/1000  
 Secondary antibody: Goat anti rabbit IgG at  
 1/5000 dilution  
 Exposure time: 1 minute



Immunohistochemistry of paraffin-embedded  
 Human brain tissue using [TA370886] (NR2E1  
 Antibody) at dilution 1/160 (Original  
 magnification: ×200)



Immunohistochemistry of paraffin-embedded  
 Human brain tissue using [TA370886] (NR2E1  
 Antibody) at dilution 1/160, treated with fusion  
 protein. (Original magnification: ×200)