

Product datasheet for **TA370880**

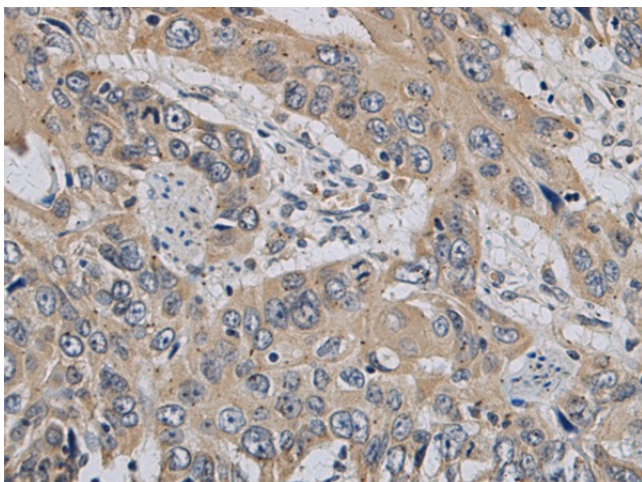
GPD2 Rabbit Polyclonal Antibody

Product data:

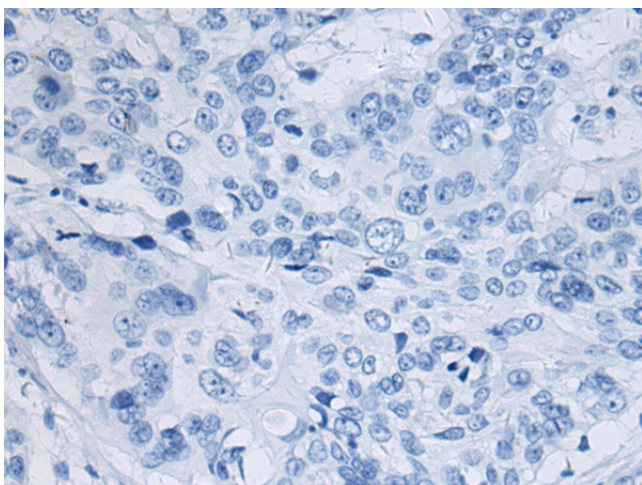
Product Type:	Primary Antibodies
Applications:	IHC
Recommended Dilution:	IHC: 150-300 Positive control: Human esophagus cancer Predicted cell location: Cytoplasm
Reactivity:	Human, Mouse, Rat
Host:	Rabbit
Isotype:	IgG
Clonality:	Polyclonal
Immunogen:	Fusion protein of human GPD2
Formulation:	pH7.4 PBS, 0.05% NaN ₃ , 40% Glycerol
Concentration:	lot specific
Purification:	Antigen affinity purification
Conjugation:	Unconjugated
Storage:	Store at -20°C.
Stability:	1 year
Gene Name:	glycerol-3-phosphate dehydrogenase 2
Database Link:	Entrez Gene 2820 Human P43304
Background:	The protein encoded by this gene localizes to the inner mitochondrial membrane and catalyzes the conversion of glycerol-3-phosphate to dihydroxyacetone phosphate, using FAD as a cofactor. Along with GDP1, the encoded protein constitutes the glycerol phosphate shuttle, which reoxidizes NADH formed during glycolysis. Two transcript variants encoding the same protein have been found for this gene.[provided by RefSeq, Jan 2010]
Synonyms:	AA408484; AI448216; AU021455; AW494132; Gdm1; Gpd-m; GPDH; Gpdh-m; mtGPDH; TISP38



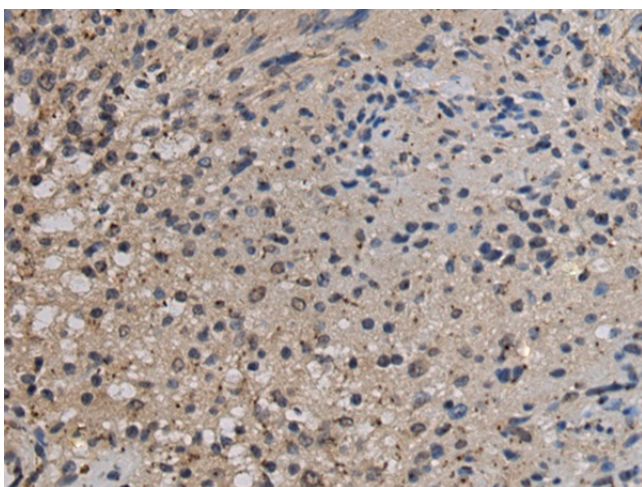
[View online »](#)

Product images:

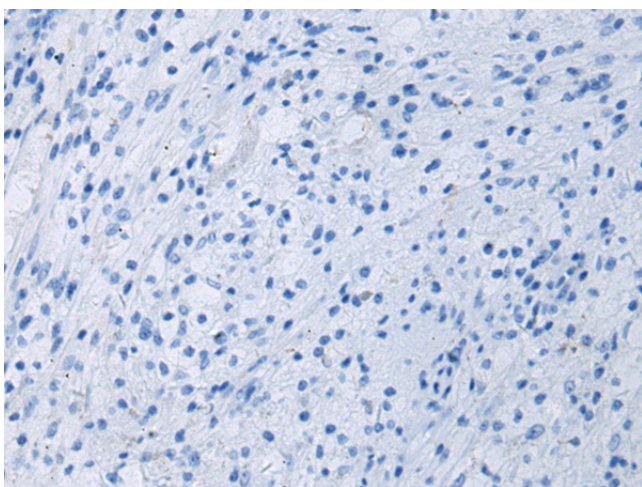
Immunohistochemistry of paraffin-embedded Human esophagus cancer tissue using TA370880 (GPD2 Antibody) at dilution 1/160 (Original magnification: $\times 200$)



Immunohistochemistry of paraffin-embedded Human esophagus cancer tissue using TA370880 (GPD2 Antibody) at dilution 1/160, treated with fusion protein. (Original magnification: $\times 200$)



Immunohistochemistry of paraffin-embedded Human brain tissue using TA370880 (GPD2 Antibody) at dilution 1/160 (Original magnification: x200)



Immunohistochemistry of paraffin-embedded Human brain tissue using TA370880 (GPD2 Antibody) at dilution 1/160, treated with fusion protein. (Original magnification: x200)