

## Product datasheet for **TA370878**

### ARPC1B Rabbit Polyclonal Antibody

#### Product data:

|                         |   |
|-------------------------|---|
| Product Type:           | Primary Antibodies  |
| Applications:           | IHC, WB   |
| Recommended Dilution:   | WB: 500-2000<br>WB positive control: Hela cell lysate<br>IHC: 50-100<br>Positive control: Human breast cancer<br>Predicted cell location: Cytoplasm |
| Reactivity:             | Human, Mouse, Rat   |
| Host:                   | Rabbit  |
| Isotype:                | IgG   |
| Clonality:              | Polyclonal  |
| Immunogen:              | Fusion protein of human ARPC1B  |
| Formulation:            | pH7.4 PBS, 0.05% NaN <sub>3</sub> , 40% Glycerol  |
| Concentration:          | lot specific  |
| Purification:           | Antigen affinity purification   |
| Conjugation:            | Unconjugated  |
| Storage:                | Store at -20°C.   |
| Stability:              | 1 year  |
| Predicted Protein Size: | 41 kDa  |
| Gene Name:              | actin related protein 2/3 complex subunit 1B  |
| Database Link:          | <a href="#">Entrez Gene 10095 Human O15143</a>  |



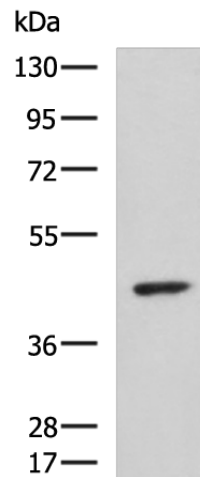
[View online »](#)

**Background:**

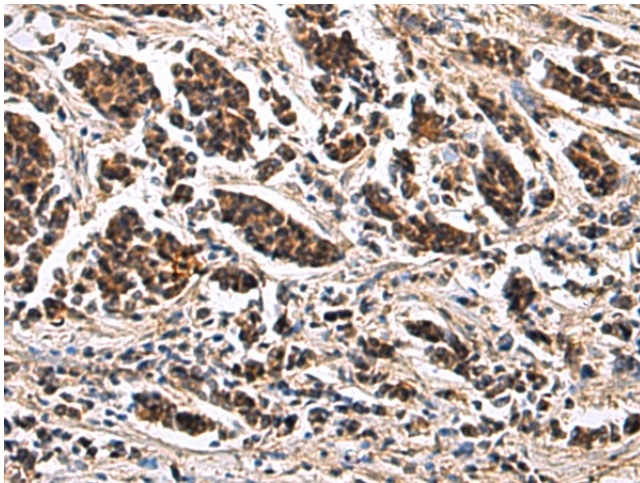
This gene encodes one of seven subunits of the human Arp2/3 protein complex. This subunit is a member of the SOP2 family of proteins and is most similar to the protein encoded by gene ARPC1A. The similarity between these two proteins suggests that they both may function as p41 subunit of the human Arp2/3 complex that has been implicated in the control of actin polymerization in cells. It is possible that the p41 subunit is involved in assembling and maintaining the structure of the Arp2/3 complex. Multiple versions of the p41 subunit may adapt the functions of the complex to different cell types or developmental stages. This protein also has a role in centrosomal homeostasis by being an activator and substrate of the Aurora A kinase.

**Synonyms:**

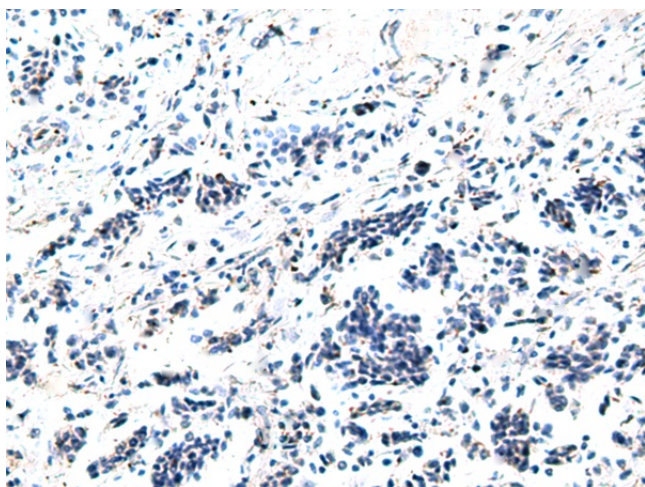
ARC41; OTTHUMP00000206020; p40-ARC; p41-ARC

**Product images:**

Gel: 8%SDS-PAGE  
Lysate: 40 µg  
Lane: HeLa cell lysate  
Primary antibody: TA370878 (ARPC1B Antibody) at dilution 1/1000  
Secondary antibody: Goat anti rabbit IgG at 1/5000 dilution  
Exposure time: 10 minutes



Immunohistochemistry of paraffin-embedded Human breast cancer tissue using TA370878 (ARPC1B Antibody) at dilution 1/65 (Original magnification: ×200)



Immunohistochemistry of paraffin-embedded Human breast cancer tissue using TA370878 (ARPC1B Antibody) at dilution 1/65, treated with fusion protein. (Original magnification: ×200)