

Product datasheet for **TA370876**

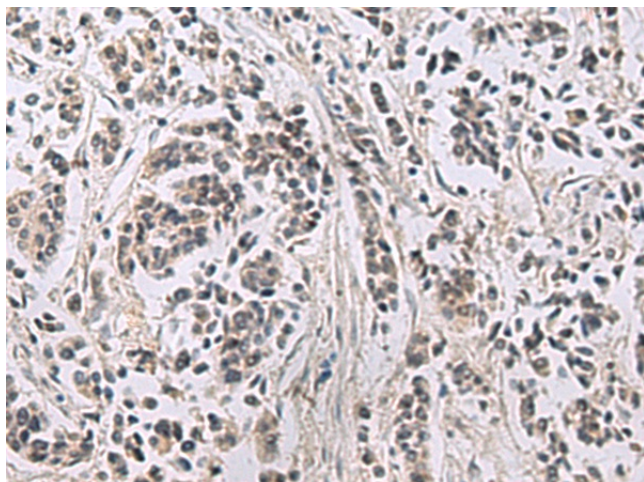
PPM1K Rabbit Polyclonal Antibody

Product data:

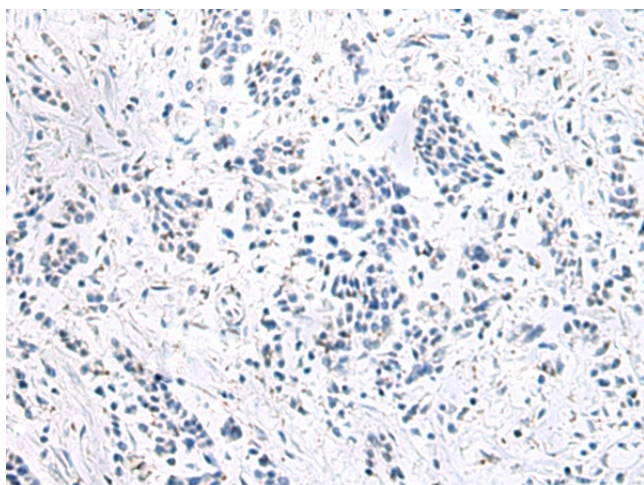
| | |
|-----------------------|--|
| Product Type: | Primary Antibodies |
| Applications: | IHC |
| Recommended Dilution: | IHC: 25-50 Positive control: Human breast cancer Predicted cell location: Cytoplasm |
| Reactivity: | Human, Mouse |
| Host: | Rabbit |
| Isotype: | IgG |
| Clonality: | Polyclonal |
| Immunogen: | Fusion protein of human PPM1K |
| Formulation: | pH7.4 PBS, 0.05% NaN ₃ , 40% Glycerol |
| Concentration: | lot specific |
| Purification: | Antigen affinity purification |
| Conjugation: | Unconjugated |
| Storage: | Store at -20°C. |
| Stability: | 1 year |
| Gene Name: | protein phosphatase, Mg ²⁺ /Mn ²⁺ dependent 1K |
| Database Link: | Entrez Gene 152926 Human Q8N3J5 |
| Background: | This gene encodes a member of the PPM family of Mn ²⁺ /Mg ²⁺ -dependent protein phosphatases. The encoded protein, essential for cell survival and development, is targeted to the mitochondria where it plays a key role in regulation of the mitochondrial permeability transition pore. |
| Synonyms: | DKFZp667B084; DKFZp761G058; hPTMP; PP2C-kappa; PP2Ckappa; PP2Cm; PTMP; UG0882E07 |



[View online »](#)

Product images:

Immunohistochemistry of paraffin-embedded Human breast cancer tissue using TA370876 (PPM1K Antibody) at dilution 1/40 (Original magnification: $\times 200$)



Immunohistochemistry of paraffin-embedded Human breast cancer tissue using TA370876 (PPM1K Antibody) at dilution 1/40, treated with fusion protein. (Original magnification: $\times 200$)