

## Product datasheet for **TA370865S**

### **FAM29A (HAUS6) Rabbit Polyclonal Antibody**

#### **Product data:**

Product Type:	Primary Antibodies
Applications:	IHC
Recommended Dilution:	IHC: 50-100 Positive control: Human tonsil Predicted cell location: Cytoplasm
Reactivity:	Human
Host:	Rabbit
Isotype:	IgG
Clonality:	Polyclonal
Immunogen:	Fusion protein of human HAUS6
Formulation:	pH7.4 PBS, 0.05% NaN <sub>3</sub> , 40% Glycerol
Purification:	Antigen affinity purification
Conjugation:	Unconjugated
Storage:	Store at -20°C.
Stability:	1 year
Gene Name:	HAUS augmin like complex subunit 6
Database Link:	<a href="#">Entrez Gene 54801 Human Q7Z4H7</a>

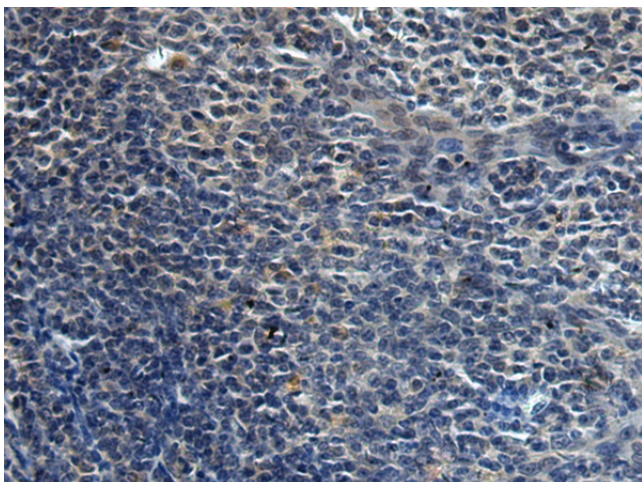
**Background:** The protein encoded by this gene is a subunit of the augmin complex. The augmin complex plays a role in microtubule attachment to the kinetochore and central spindle formation. This protein may have a role in efficient chromosome congression and segregation by promoting microtubule-dependent microtubule amplification. Pseudogenes of this gene are located on chromosomes 7 and 20. Alternative splicing results in multiple transcript variants that encode different protein isoforms.

**Synonyms:** Dgt6; FAM29A; FLJ20060; KIAA1574; MGC102696; MGC138798; MGC138799; RP11-296P7.3

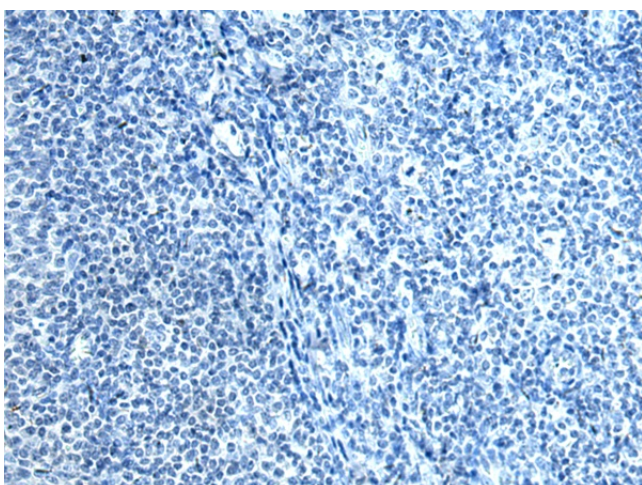


[View online »](#)

## Product images:



Immunohistochemistry of paraffin-embedded Human tonsil tissue using [TA370865] (HAUS6 Antibody) at dilution 1/45 (Original magnification: ×200)



Immunohistochemistry of paraffin-embedded Human tonsil tissue using [TA370865] (HAUS6 Antibody) at dilution 1/45, treated with fusion protein. (Original magnification: ×200)