

## Product datasheet for **TA370864**

### G protein alpha inhibitor 1 (GNAI1) Rabbit Polyclonal Antibody

#### Product data:

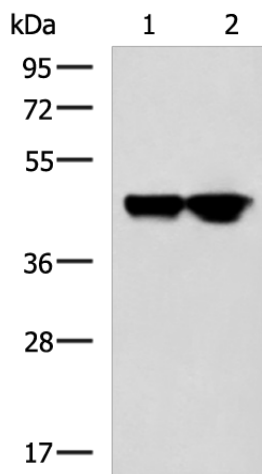
Product Type:	Primary Antibodies
Applications:	IHC, WB
Recommended Dilution:	WB: 1000-5000 WB positive control: A172 and Hela cell lysates IHC: 100-200 Positive control: Human gastric cancer Predicted cell location: Cytoplasm
Reactivity:	Human, Mouse, Rat
Host:	Rabbit
Isotype:	IgG
Clonality:	Polyclonal
Immunogen:	Fusion protein of human GNAI1
Formulation:	pH7.4 PBS, 0.05% NaN <sub>3</sub> , 40% Glycerol
Concentration:	lot specific
Purification:	Antigen affinity purification
Conjugation:	Unconjugated
Storage:	Store at -20°C.
Stability:	1 year
Predicted Protein Size:	40 kDa
Gene Name:	G protein subunit alpha i1
Database Link:	<a href="#">Entrez Gene 2770 Human P63096</a>
Background:	Guanine nucleotide binding proteins are heterotrimeric signal-transducing molecules consisting of alpha, beta, and gamma subunits. The alpha subunit binds guanine nucleotide, can hydrolyze GTP, and can interact with other proteins. The protein encoded by this gene represents the alpha subunit of an inhibitory complex. The encoded protein is part of a complex that responds to beta-adrenergic signals by inhibiting adenylate cyclase. Two transcript variants encoding different isoforms have been found for this gene.



[View online »](#)

Synonyms: Gi

### Product images:



Gel: 8%SDS-PAGE

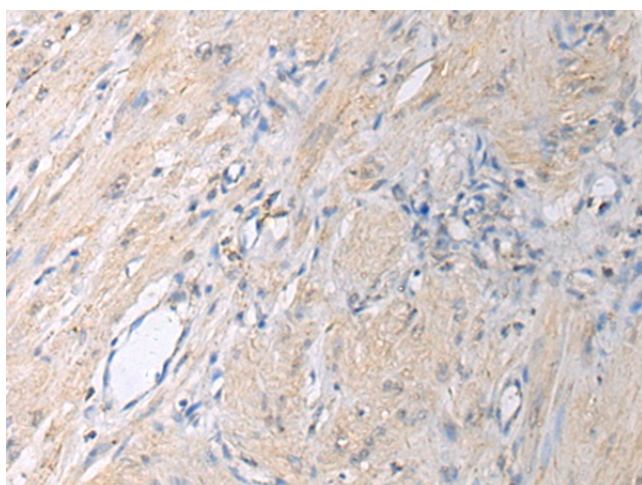
Lysate: 40  $\mu$ g

Lane 1-2: A172 and HeLa cell lysates

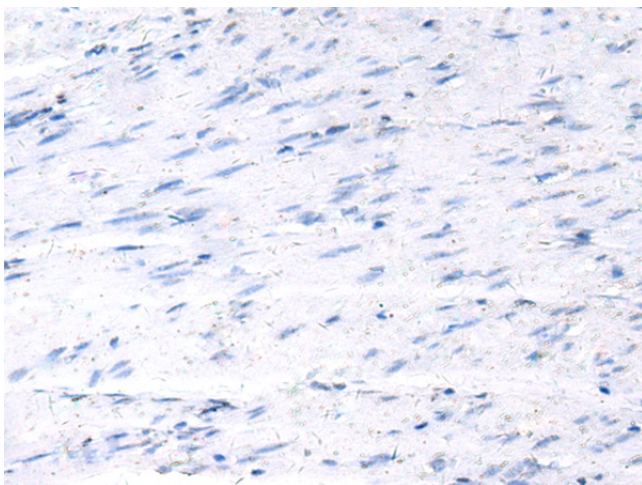
Primary antibody: TA370864 (GNAI1 Antibody) at dilution 1/2000

Secondary antibody: Goat anti rabbit IgG at 1/5000 dilution

Exposure time: 1 minute



Immunohistochemistry of paraffin-embedded Human gastric cancer tissue using TA370864 (GNAI1 Antibody) at dilution 1/130 (Original magnification:  $\times$ 200)



Immunohistochemistry of paraffin-embedded Human gastric cancer tissue using TA370864 (GNAI1 Antibody) at dilution 1/130, treated with fusion protein. (Original magnification: ×200)