

Product datasheet for **TA370857S**

EMILIN1 Rabbit Polyclonal Antibody

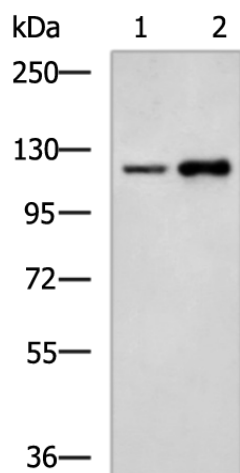
Product data:

Product Type:	Primary Antibodies
Applications:	IHC, WB
Recommended Dilution:	WB: 500-2000 WB positive control: 293T and LOVO cell lysates IHC: 50-100 Positive control: Human tonsil Predicted cell location: Secreted
Reactivity:	Human, Mouse
Host:	Rabbit
Isotype:	IgG
Clonality:	Polyclonal
Immunogen:	Fusion protein of human EMILIN1
Formulation:	pH7.4 PBS, 0.05% NaN ₃ , 40% Glycerol
Purification:	Antigen affinity purification
Conjugation:	Unconjugated
Storage:	Store at -20°C.
Stability:	1 year
Predicted Protein Size:	107 kDa
Gene Name:	elastin microfibril interfacier 1
Database Link:	Entrez Gene 11117 Human Q9Y6C2
Background:	This gene encodes an extracellular matrix glycoprotein that is characterized by an N-terminal microfibril interface domain, a coiled-coiled alpha-helical domain, a collagenous domain and a C-terminal globular C1q domain. The encoded protein associates with elastic fibers at the interface between elastin and microfibrils and may play a role in the development of elastic tissues including large blood vessels, dermis, heart and lung.
Synonyms:	DKFZp586M121; EMI; EMILIN; gp115

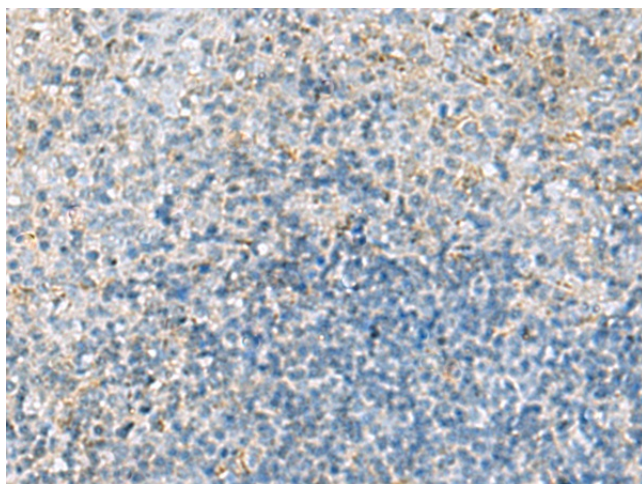


[View online »](#)

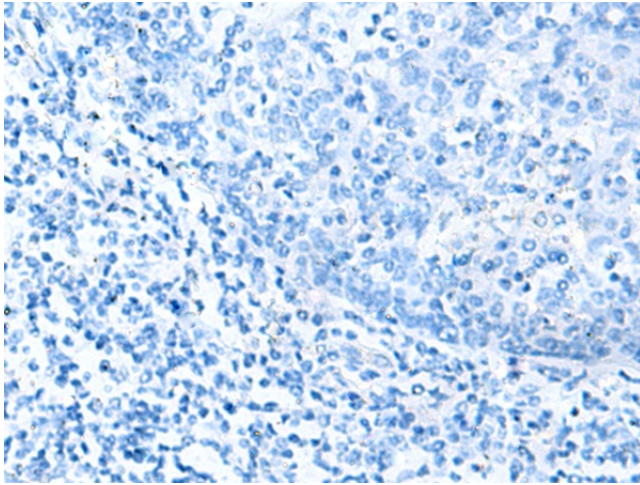
Product images:



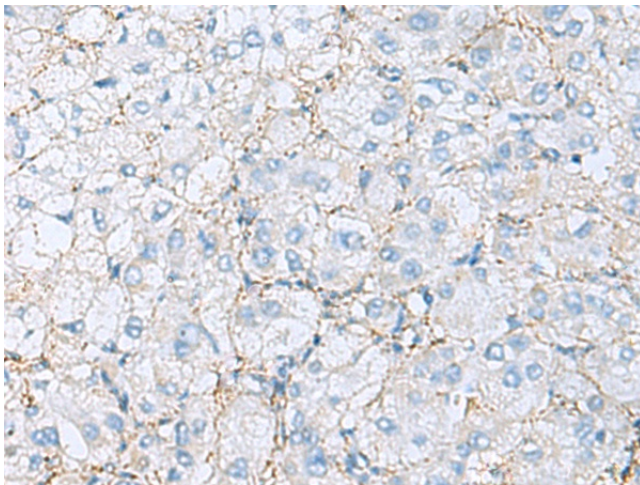
Gel: 6%SDS-PAGE
Lysate: 40 μ g
Lane 1-2: 293T and LOVO cell lysates
Primary antibody: [TA370857] (EMILIN1 Antibody)
at dilution 1/1000
Secondary antibody: Goat anti rabbit IgG at
1/5000 dilution
Exposure time: 1 minute



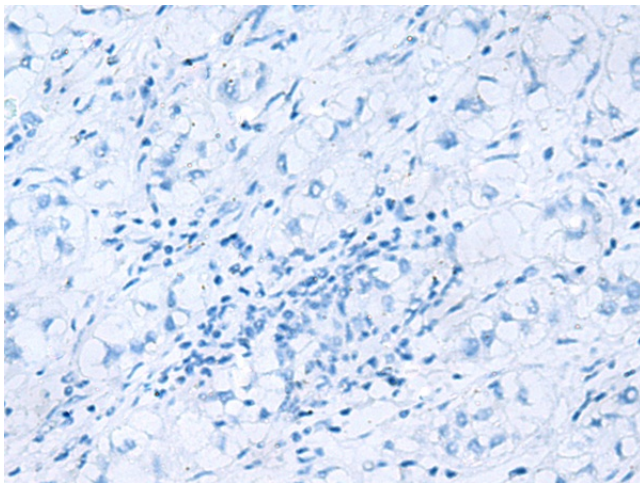
Immunohistochemistry of paraffin-embedded
Human tonsil tissue using [TA370857] (EMILIN1
Antibody) at dilution 1/70 (Original magnification:
 \times 200)



Immunohistochemistry of paraffin-embedded Human tonsil tissue using [TA370857] (EMILIN1 Antibody) at dilution 1/70, treated with fusion protein. (Original magnification: $\times 200$)



Immunohistochemistry of paraffin-embedded Human liver cancer tissue using [TA370857] (EMILIN1 Antibody) at dilution 1/70 (Original magnification: $\times 200$)



Immunohistochemistry of paraffin-embedded Human liver cancer tissue using [TA370857] (EMILIN1 Antibody) at dilution 1/70, treated with fusion protein. (Original magnification: $\times 200$)