

Product datasheet for **TA370853**

HSDL2 Rabbit Polyclonal Antibody

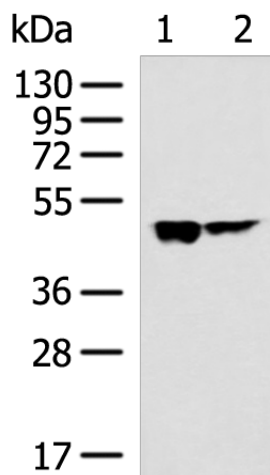
Product data:

Product Type:	Primary Antibodies
Applications:	IHC, WB
Recommended Dilution:	WB: 1000-5000 WB positive control: 293T and Hela cell lysates IHC: 50-100 Positive control: Human gastric cancer Predicted cell location: Cytoplasm
Reactivity:	Human
Host:	Rabbit
Isotype:	IgG
Clonality:	Polyclonal
Immunogen:	Fusion protein of human HSDL2
Formulation:	pH7.4 PBS, 0.05% NaN ₃ , 40% Glycerol
Concentration:	lot specific
Purification:	Antigen affinity purification
Conjugation:	Unconjugated
Storage:	Store at -20°C.
Stability:	1 year
Predicted Protein Size:	45 kDa
Gene Name:	hydroxysteroid dehydrogenase like 2
Database Link:	Entrez Gene 84263 Human Q6YN16
Background:	Has apparently no steroid dehydrogenase activity.
Synonyms:	C9orf99; FLJ25855; MGC10940; SDR13C1



[View online »](#)

Product images:



Gel: 8%SDS-PAGE

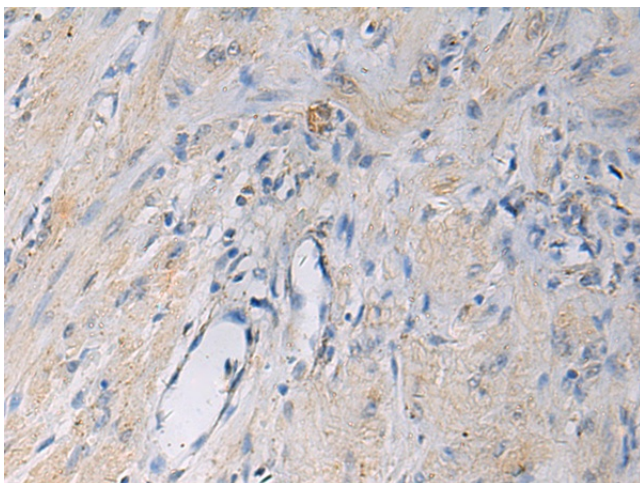
Lysate: 40 μ g

Lane 1-2: 293T and Hela cell lysates

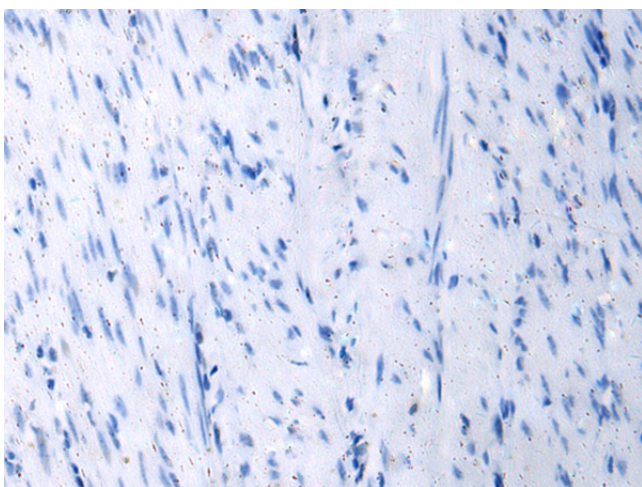
Primary antibody: TA370853 (HSDL2 Antibody) at dilution 1/1000

Secondary antibody: Goat anti rabbit IgG at 1/5000 dilution

Exposure time: 1 minute



Immunohistochemistry of paraffin-embedded Human gastric cancer tissue using TA370853 (HSDL2 Antibody) at dilution 1/55 (Original magnification: \times 200)



Immunohistochemistry of paraffin-embedded Human gastric cancer tissue using TA370853 (HSDL2 Antibody) at dilution 1/55, treated with fusion protein. (Original magnification: $\times 200$)