

## Product datasheet for **TA370848S**

### Mutarotase (GALM) Rabbit Polyclonal Antibody

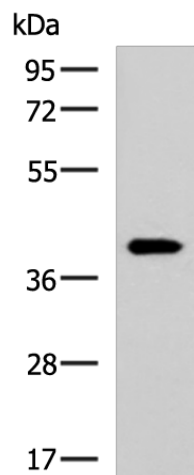
#### Product data:

Product Type:	Primary Antibodies
Applications:	IHC, WB
Recommended Dilution:	WB: 500-2000 WB positive control: Rat kidney tissue lysate IHC: 50-100 Positive control: Human brain Predicted cell location: Cytoplasm
Reactivity:	Human, Mouse, Rat
Host:	Rabbit
Isotype:	IgG
Clonality:	Polyclonal
Immunogen:	Fusion protein of human GALM
Formulation:	pH7.4 PBS, 0.05% NaN <sub>3</sub> , 40% Glycerol
Purification:	Antigen affinity purification
Conjugation:	Unconjugated
Storage:	Store at -20°C.
Stability:	1 year
Predicted Protein Size:	38 kDa
Gene Name:	galactose mutarotase
Database Link:	<a href="#">Entrez Gene 130589 Human Q96C23</a>
Background:	This gene encodes an enzyme that catalyzes the epimerization of hexose sugars such as glucose and galactose. The encoded protein is expressed in the cytoplasm and has a preference for galactose. The encoded protein may be required for normal galactose metabolism by maintaining the equilibrium of alpha and beta anomers of galactose.
Synonyms:	BLOCK25; galactomutarotase; IBD1

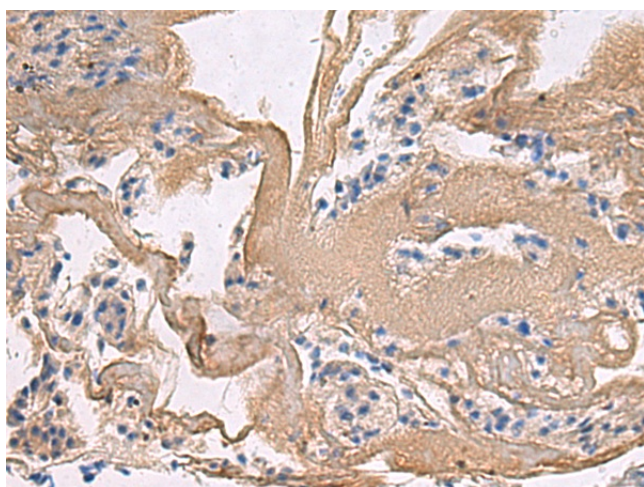


[View online »](#)

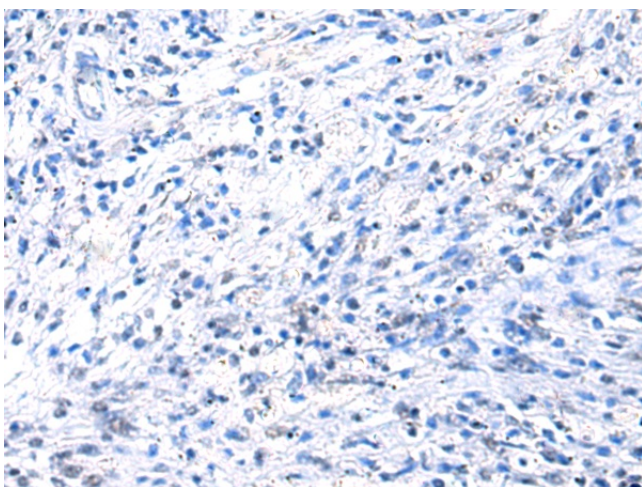
## Product images:



Gel: 8%SDS-PAGE  
Lysate: 40  $\mu$ g  
Lane: Rat kidney tissue lysate  
Primary antibody: [TA370848] (GALM Antibody) at dilution 1/500  
Secondary antibody: Goat anti rabbit IgG at 1/5000 dilution  
Exposure time: 10 seconds



Immunohistochemistry of paraffin-embedded Human brain tissue using [TA370848] (GALM Antibody) at dilution 1/35 (Original magnification:  $\times$ 200)



Immunohistochemistry of paraffin-embedded Human brain tissue using [TA370848] (GALM Antibody) at dilution 1/35, treated with fusion protein. (Original magnification:  $\times 200$ )