

## Product datasheet for **TA370844**

### RFC5 Rabbit Polyclonal Antibody

#### Product data:

Product Type:	Primary Antibodies
Applications:	WB
Recommended Dilution:	WB: 500-2000 WB positive control: 231 cell lysate
Reactivity:	Human, Mouse
Host:	Rabbit
Isotype:	IgG
Clonality:	Polyclonal
Immunogen:	Fusion protein of human RFC5
Formulation:	pH7.4 PBS, 0.05% NaN <sub>3</sub> , 40% Glycerol
Concentration:	lot specific
Purification:	Antigen affinity purification
Conjugation:	Unconjugated
Storage:	Store at -20°C.
Stability:	1 year
Predicted Protein Size:	38 kDa
Gene Name:	replication factor C subunit 5
Database Link:	<a href="#">Entrez Gene 5985 Human P40937</a>

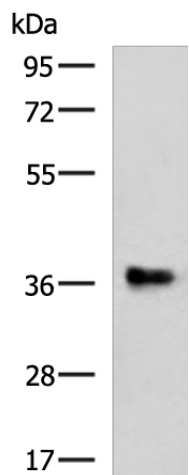
**Background:** This gene encodes the smallest subunit of the replication factor C complex, which consists of five distinct subunits (140, 40, 38, 37, and 36 kDa) and is required for DNA replication. This subunit interacts with the C-terminal region of proliferating cell nuclear antigen and is required to open and load proliferating cell nuclear antigen onto DNA during S phase. It is a member of the AAA+ (ATPases associated with various cellular activities) ATPase family and forms a core complex with the 38 and 40 kDa subunits that possesses DNA-dependent ATPase activity. A related pseudogene has been identified on chromosome 9. Alternative splicing results in multiple transcript variants.

**Synonyms:** MGC1155; OTTHUMP00000209892; RFC36



[View online »](#)

## Product images:



Gel: 8%SDS-PAGE  
Lysate: 40 µg  
Lane: 231 cell lysate  
Primary antibody: TA370844 (RFC5 Antibody) at dilution 1/550  
Secondary antibody: Goat anti rabbit IgG at 1/5000 dilution  
Exposure time: 30 seconds