

## Product datasheet for **TA370835**

### mu Crystallin (CRYM) Rabbit Polyclonal Antibody

#### Product data:

Product Type:	Primary Antibodies
Applications:	IHC, WB
Recommended Dilution:	WB: 500-2000 WB positive control: Human heart tissue lysate IHC: 50-200 Positive control: Human cervical cancer Predicted cell location: Cytoplasm
Reactivity:	Human, Mouse, Rat
Host:	Rabbit
Isotype:	IgG
Clonality:	Polyclonal
Immunogen:	Fusion protein of human CRYM
Formulation:	pH7.4 PBS, 0.05% NaN <sub>3</sub> , 40% Glycerol
Concentration:	lot specific
Purification:	Antigen affinity purification
Conjugation:	Unconjugated
Storage:	Store at -20°C.
Stability:	1 year
Predicted Protein Size:	34 kDa
Gene Name:	crystallin mu
Database Link:	<a href="#">Entrez Gene 1428 Human Q14894</a>



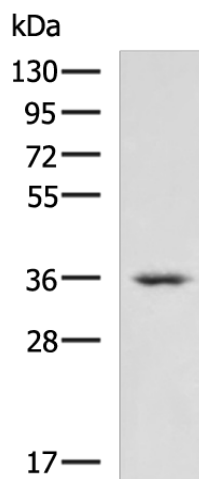
[View online »](#)

**Background:**

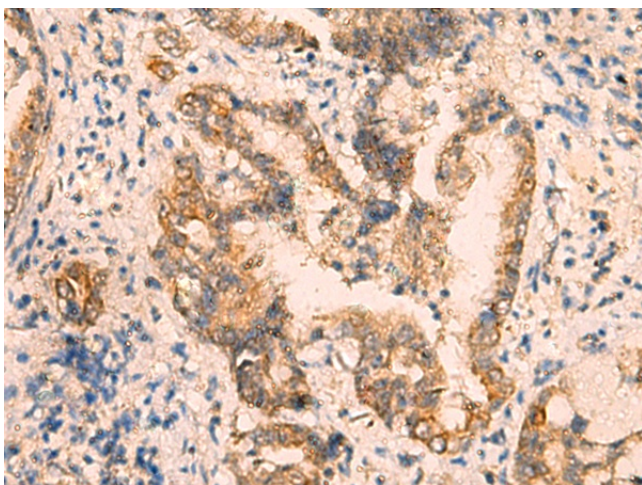
Crystallins are separated into two classes: taxon-specific and ubiquitous. The former class is also called phylogenetically-restricted crystallins. The latter class constitutes the major proteins of vertebrate eye lens and maintains the transparency and refractive index of the lens. This gene encodes a taxon-specific crystallin protein that binds NADPH and has sequence similarity to bacterial ornithine cyclodeaminases. The encoded protein does not perform a structural role in lens tissue, and instead it binds thyroid hormone for possible regulatory or developmental roles. Mutations in this gene have been associated with autosomal dominant non-syndromic deafness.

**Synonyms:**

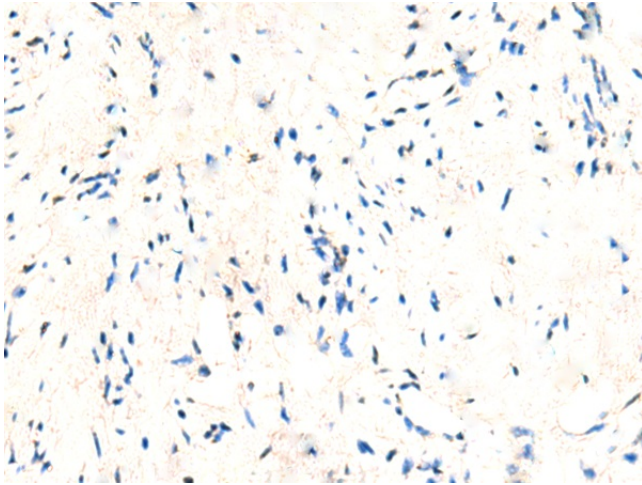
DFNA40; OTTHUMP00000115878; THBP

**Product images:**

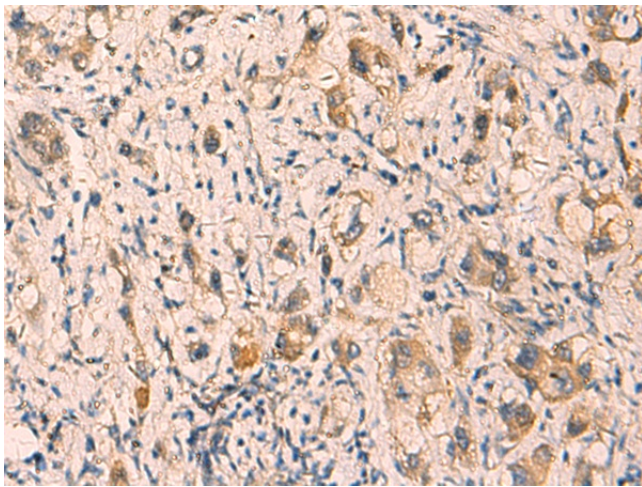
Gel: 8%SDS-PAGE  
Lysate: 40 µg  
Lane: Human heart tissue lysate  
Primary antibody: TA370835 (CRYM Antibody) at dilution 1/1000  
Secondary antibody: Goat anti rabbit IgG at 1/5000 dilution  
Exposure time: 1 minute



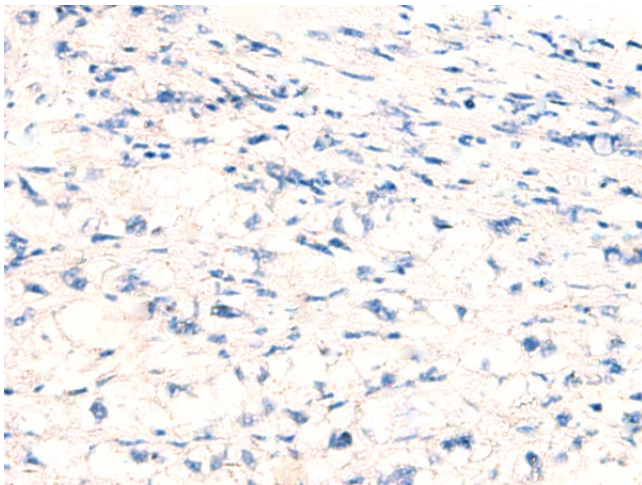
Immunohistochemistry of paraffin-embedded Human cervical cancer tissue using TA370835 (CRYM Antibody) at dilution 1/65 (Original magnification: ×200)



Immunohistochemistry of paraffin-embedded Human cervical cancer tissue using TA370835 (CRYM Antibody) at dilution 1/65, treated with fusion protein. (Original magnification: ×200)



Immunohistochemistry of paraffin-embedded Human liver cancer tissue using TA370835 (CRYM Antibody) at dilution 1/65 (Original magnification: ×200)



Immunohistochemistry of paraffin-embedded Human liver cancer tissue using TA370835 (CRYM Antibody) at dilution 1/65, treated with fusion protein. (Original magnification: ×200)