

## Product datasheet for **TA370822**

### Junctional Adhesion Molecule 1 (F11R) Rabbit Polyclonal Antibody

#### Product data:

Product Type:	Primary Antibodies
Applications:	IHC
Recommended Dilution:	IHC: 50-100 Positive control: Human liver cancer Predicted cell location: Cell membrane
Reactivity:	Human
Host:	Rabbit
Isotype:	IgG
Clonality:	Polyclonal
Immunogen:	Fusion protein of human F11R
Formulation:	pH7.4 PBS, 0.05% NaN <sub>3</sub> , 40% Glycerol
Concentration:	lot specific
Purification:	Antigen affinity purification
Conjugation:	Unconjugated
Storage:	Store at -20°C.
Stability:	1 year
Gene Name:	F11 receptor
Database Link:	<a href="#">Entrez Gene 50848 Human Q9Y624</a>

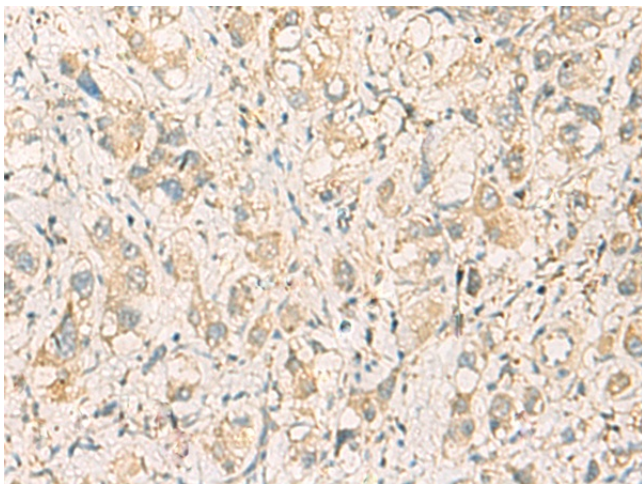
**Background:** Tight junctions represent one mode of cell-to-cell adhesion in epithelial or endothelial cell sheets, forming continuous seals around cells and serving as a physical barrier to prevent solutes and water from passing freely through the paracellular space. The protein encoded by this immunoglobulin superfamily gene member is an important regulator of tight junction assembly in epithelia. In addition, the encoded protein can act as (1) a receptor for reovirus, (2) a ligand for the integrin LFA1, involved in leukocyte transmigration, and (3) a platelet receptor. Multiple 5' alternatively spliced variants, encoding the same protein, have been identified but their biological validity has not been established.



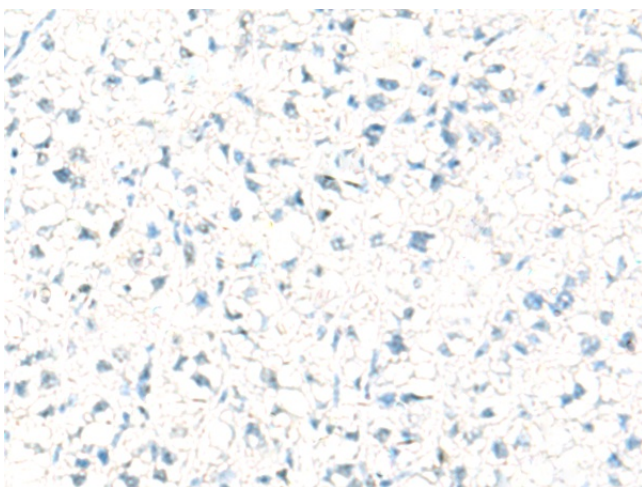
[View online »](#)

Synonyms: CD321; JAM; JAM-1; JAM-A; JAM1; JAMA; JCAM; KAT; OTTHUMP00000027880; OTTHUMP00000027881; PAM-1

### Product images:



Immunohistochemistry of paraffin-embedded Human liver cancer tissue using TA370822 (F11R Antibody) at dilution 1/40 (Original magnification: ×200)



Immunohistochemistry of paraffin-embedded Human liver cancer tissue using TA370822 (F11R Antibody) at dilution 1/40, treated with fusion protein. (Original magnification: ×200)