

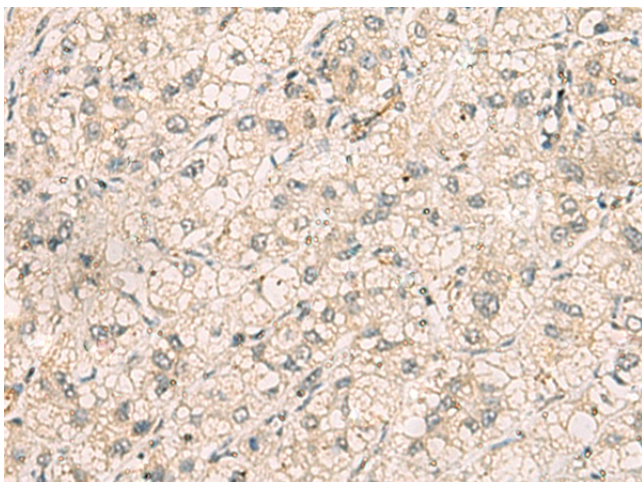
## Product datasheet for **TA370817**

### TTLL5 Rabbit Polyclonal Antibody

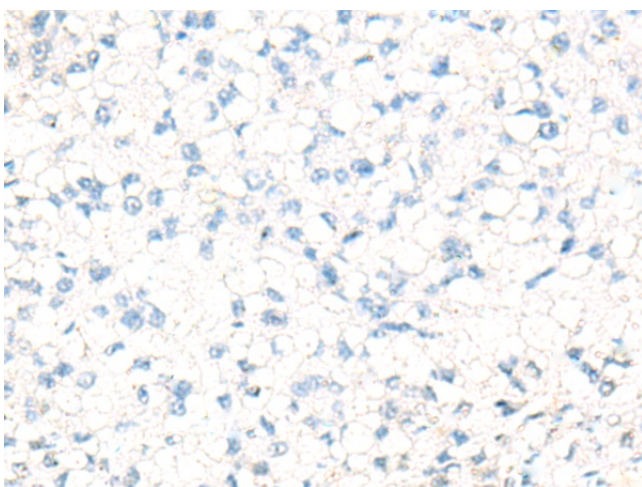
#### Product data:

|                       |  |
|-----------------------|--|
| Product Type:         | Primary Antibodies   |
| Applications:         | IHC  |
| Recommended Dilution: | IHC: 50-100<br>Positive control: Human liver cancer<br>Predicted cell location: Cytoplasm  |
| Reactivity:           | Human, Mouse   |
| Host:                 | Rabbit   |
| Isotype:              | IgG  |
| Clonality:            | Polyclonal   |
| Immunogen:            | Fusion protein of human TTLL5  |
| Formulation:          | pH7.4 PBS, 0.05% NaN <sub>3</sub> , 40% Glycerol   |
| Concentration:        | lot specific   |
| Purification:         | Antigen affinity purification  |
| Conjugation:          | Unconjugated   |
| Storage:              | Store at -20°C.  |
| Stability:            | 1 year   |
| Gene Name:            | tubulin tyrosine ligase like 5   |
| Database Link:        | <a href="#">Entrez Gene 23093 Human</a><br><a href="#">Q6EMB2</a>  |
| Background:           | This gene encodes a member of the tubulin tyrosine ligase like protein family. This protein interacts with two glucocorticoid receptor coactivators, transcriptional intermediary factor 2 and steroid receptor coactivator 1. This protein may function as a coregulator of glucocorticoid receptor mediated gene induction and repression. This protein may also function as an alpha tubulin polyglutamylase. |
| Synonyms:             | KIAA0998; MGC117189; STAMP   |

[View online »](#)

**Product images:**


Immunohistochemistry of paraffin-embedded Human liver cancer tissue using TA370817 (TTLL5 Antibody) at dilution 1/70 (Original magnification: ×200)



Immunohistochemistry of paraffin-embedded Human liver cancer tissue using TA370817 (TTLL5 Antibody) at dilution 1/70, treated with fusion protein. (Original magnification: ×200)