

Product datasheet for **TA370815**

Myeloid leukemia factor 1 (MLF1) Rabbit Polyclonal Antibody

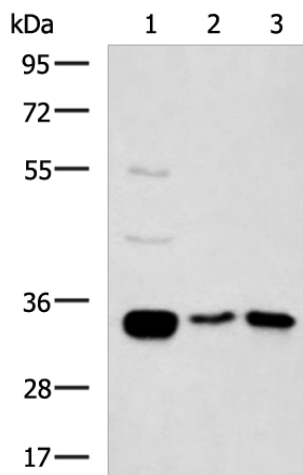
Product data:

Product Type:	Primary Antibodies
Applications:	WB
Recommended Dilution:	WB: 500-2000 WB positive control: Mouse heart tissue, Human cerebrum tissue, Human cerebella tissue lysates
Reactivity:	Human, Mouse
Host:	Rabbit
Isotype:	IgG
Clonality:	Polyclonal
Immunogen:	Fusion protein of human MLF1
Formulation:	pH7.4 PBS, 0.05% NaN ₃ , 40% Glycerol
Concentration:	lot specific
Purification:	Antigen affinity purification
Conjugation:	Unconjugated
Storage:	Store at -20°C.
Stability:	1 year
Predicted Protein Size:	31 kDa
Gene Name:	myeloid leukemia factor 1
Database Link:	Entrez Gene 4291 Human P58340
Background:	This gene encodes an oncoprotein which is thought to play a role in the phenotypic determination of hemopoetic cells. Translocations between this gene and nucleophosmin have been associated with myelodysplastic syndrome and acute myeloid leukemia. Multiple transcript variants encoding different isoforms have been found for this gene.
Synonyms:	MLF1



[View online »](#)

Product images:



Gel: 8%SDS-PAGE
Lysate: 40 µg
Lane 1-3: Mouse heart tissue
Human cerebrum tissue
Human cerebella tissue lysates
Primary antibody: TA370815 (MLF1 Antibody) at
dilution 1/800
Secondary antibody: Goat anti rabbit IgG at
1/5000 dilution
Exposure time: 2 minutes